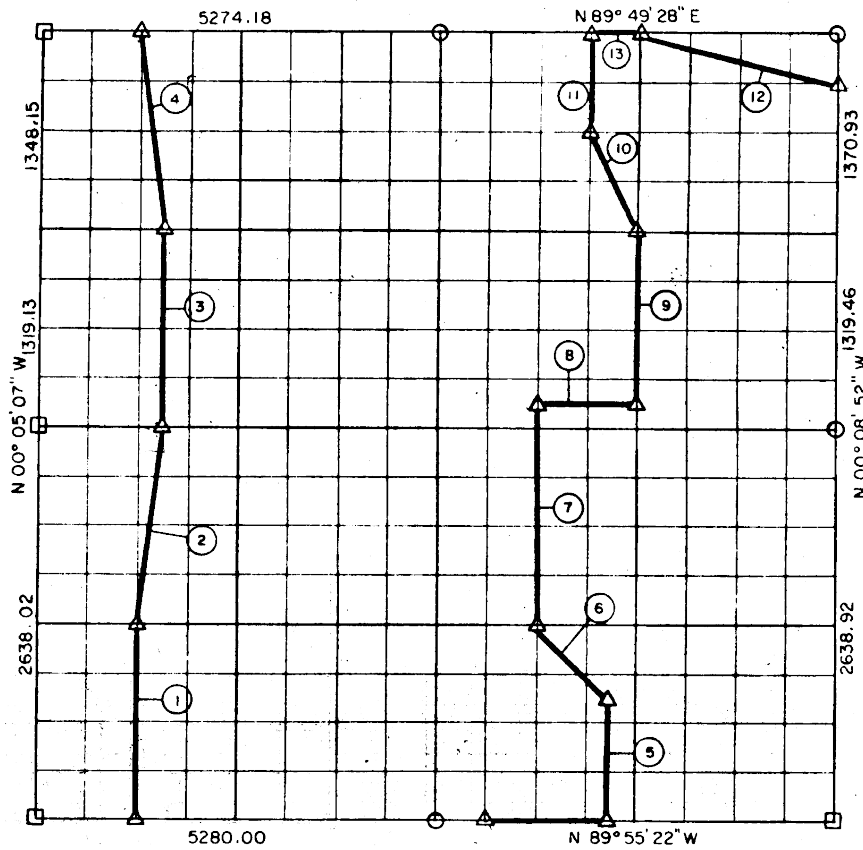


SEC. 3 , T 7 N, R 16 E, PITTSBURG COU



Course No.	Distance	Bearing	Course No.	Distance	Bearing
1	1319.12	N 00° 05' 35" W			
2	1329.31	N 07° 02' 00" E			
3	1319.18	N 00° 05' 42" W			
4	1361.47	N 07° 02' 53" W			
5	824.59	N 00° 07' 48" W			
6	701.00	N 45° 02' 04" W			
7	1484.27	N 00° 07' 27" W			
8	659.62	S 89° 55' 59" E			
9	1154.46	N 00° 07' 55" W			
10	758.44	N 25° 53' 49" W			
11	681.91	N 00° 07' 41" W			
12	1362.19	S 75° 36' 11" E			
13	329.64	N 89° 49' 28" E			
	13285.24				

Book No. E-973

Date: February, 1965

463

I, Jack R. Kalman, a Registered Professional Engineer, do hereby certify that the above plat is a true and accurate survey of Sec. 3 T 7 N, R 16 E as made under my supervision.

13 285.24

*Jack R. Kalman*  
 JACK R. KALMAN  
 Reg. Prof. Engr. No. 2786