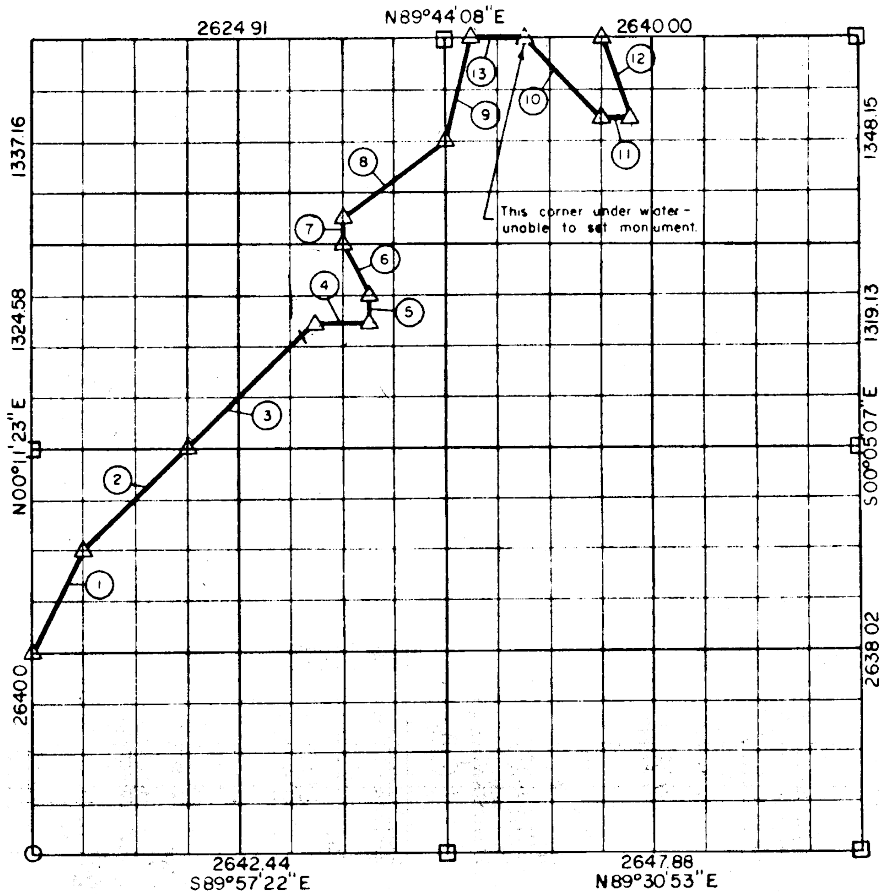


EC. 4 , T 7 N, R 16 E PITTSBURG COU



Course No.	Distance	Bearing	Course No.	Distance	Bearing
1	738.91'	N 26° 40' 18" E			
2	934.37'	N 44° 58' 17" E			
3	1169.72'	N 44° 46' 44" E			
4	328.87'	N 89° 55' 28" E			
5	165.62'	N 00° 02' 03" E			
6	369.46'	N 26° 22' 30" W			
7	167.93'	N 00° 02' 15" E			
8	829.21'	N 52° 24' 53" E			
9	693.42'	N 13° 45' 53" E			
10	705.61'	S 44° 34' 19" E			
11	165.05'	N 89° 45' 21" E			
12	530.62'	N 18° 08' 39" W			
13	330.00'	N 89° 44' 08" E			
	7128.79				

Book No. E-974

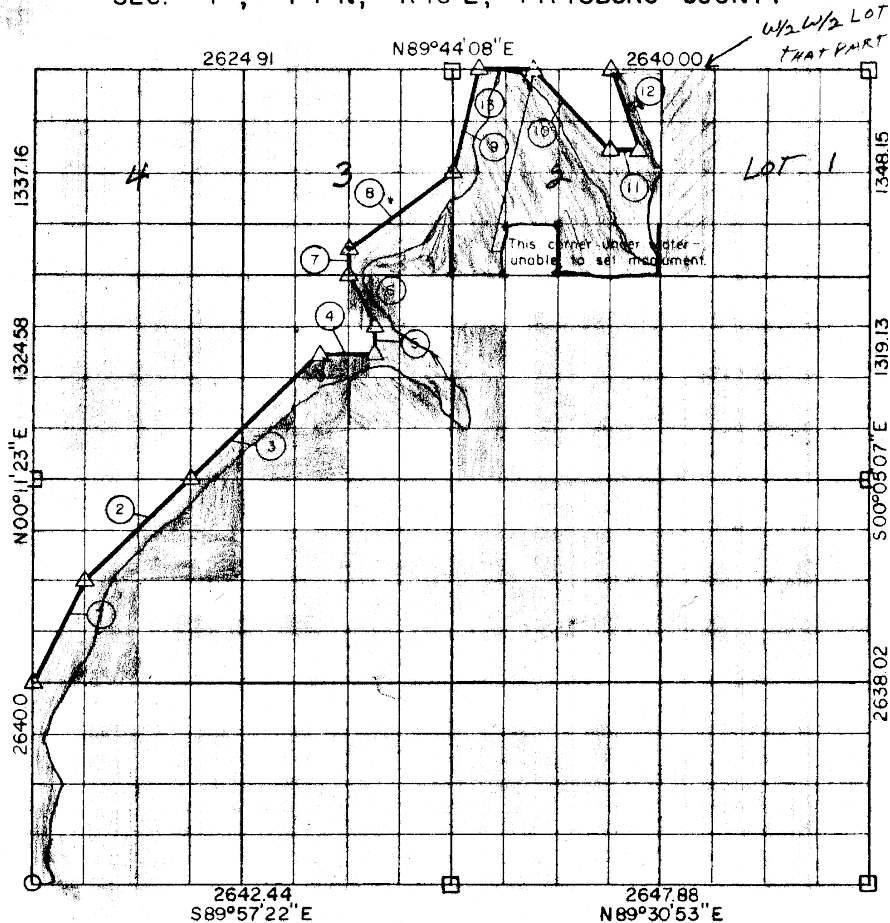
Date: February, 1965

462

I, Jack R. Kalman, a Registered Professional Engineer, do hereby certify that the above plat is a true and accurate survey of Sec. 4, T 7 N, R 16 E as made under my supervision.

Jack R. Kalman
JACK R. KALMAN
 Reg. Prof. Engr. No. 2786

SEC. 4, T 7 N, R 16 E, PITTSBURG COUNTY



Course No.	Distance	Bearing	Course No.	Distance	Bearing
1	738.91'	N 26° 40' 18" E			
2	934.37'	N 44° 58' 17" E			
3	1169.72'	N 44° 46' 44" E			
4	328.87'	N 89° 55' 28" E			
5	165.62'	N 00° 02' 03" E			
6	369.46'	N 26° 22' 30" W			
7	167.93'	N 00° 02' 15" E			
8	829.21'	N 52° 24' 53" E			
9	693.42'	N 13° 45' 53" E			
10	705.61'	S 44° 34' 19" E			
11	165.05'	N 89° 45' 21" E			
12	530.62'	N 18° 08' 39" W			
13	330.00'	N 89° 44' 08" E			

Book No. E-974

Date: February, 1965

I, Jack R. Kalman, a Registered Professional Engineer, do hereby certify that the above plat is a true and accurate survey of Sec. 4, T 7 N, R 16 E as made under my supervision.

Jack R. Kalman
 JACK R. KALMAN
 Reg. Prof. Engr. No. 2786