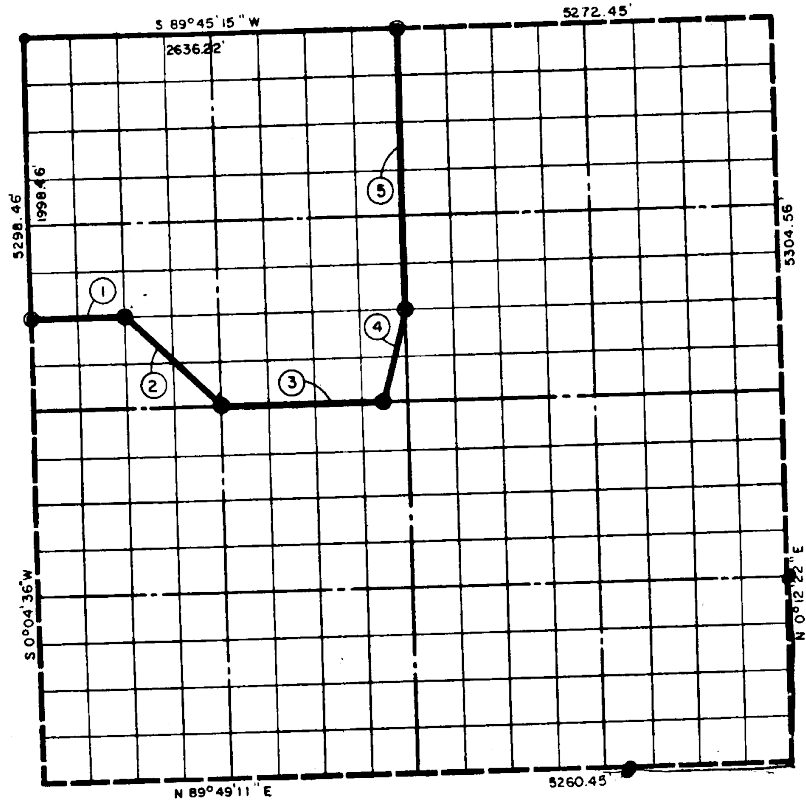


ION 5, T 7 N, R. 16 E ITTSBURG . COUNT

- ⊙ BRASS CAP IN CONCRETE
- ORIGINAL STONE
- IRON PIN



| COURSE NO. | DISTANCE | BEARING | COURSE NO. | DISTANCE | BEARING |
|------------|----------|-----------------|------------|----------|---------|
| ① | 658.48' | N 89° 49' 13" E | | | |
| ② | 929.96' | S 44° 58' 09" E | | | |
| ③ | 1152.03' | N 89° 49' 12" E | | | |
| ④ | 681.10' | N 14° 07' 27" E | | | |
| ⑤ | 2001.51' | N 0° 08' 29" E | | | |
| | 5923.08' | | | | |

E-1065

461

Carney, a Registered Professional Engineer, do hereby certify that the above plat is a true and accurate survey of T 7 N., R. 16 E. as made under my supervision.

John Carney
 JOHN CARNEY
 Reg. Prof. Engr. No. 137