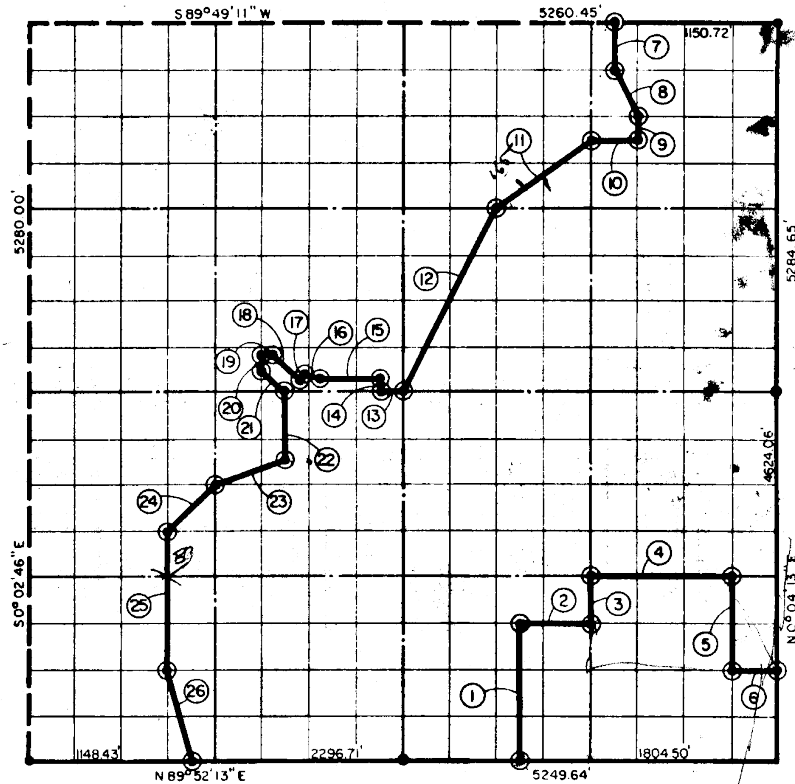


SECTION 8, T 7 N, R 16 E, WETSBERG COUNTY

- BRASS CAP IN CONCRETE
- ORIGINAL STONE
- IRON PIN



COURSE NO.	DISTANCE	BEARING	COURSE NO.	DISTANCE	BEARING
1	990.56'	N 0° 01' 48" E	14	80.74	N 0° 00' 30" W
2	492.34'	N 89° 51' 39" E	15	355.04'	S 89° 22' 00" W
3	330.22'	N 0° 02' 27" E	16	104.07'	N 82° 53' 23" W
4	984.81'	N 89° 51' 27" E	17	10.00'	S 14° 57' 37" W
5	660.54'	S 0° 03' 47" W	18	332.66'	N 56° 16' 23" W
6	328.19'	N 89° 51' 50" E	19	47.00'	S 89° 11' 37" W
7	330.23'	S 0° 02' 41" W	20	105.87'	S 0° 00' 37" E
8	368.30'	S 26° 27' 26" E	21	232.53'	S 44° 56' 19" E
9	165.12'	S 0° 02' 55" W	22	45.15'	S 0° 00' 24" E
10	328.67'	S 89° 49' 39" W	23	99.84'	S 71° 20' 22" W
11	824.41'	S 52° 54' 13" W	24	46.07'	S 44° 45' 56" W
12	1476.92'	S 26° 26' 04" W	25	990.16'	S 0° 01' 30" E
13	164.22'	S 89° 50' 41" W	26	679.88'	S 13° 59' 16" E

11,863.54 471

I, John Carney, a Registered Professional Engineer, do hereby certify that the above plot is a true and accurate survey of Sec. 8 T. 7 N., R. 16 E. as made under my supervision.

E-1066

John Carney
 JOHN CARNEY
 Reg. Prof. Engr. No 137