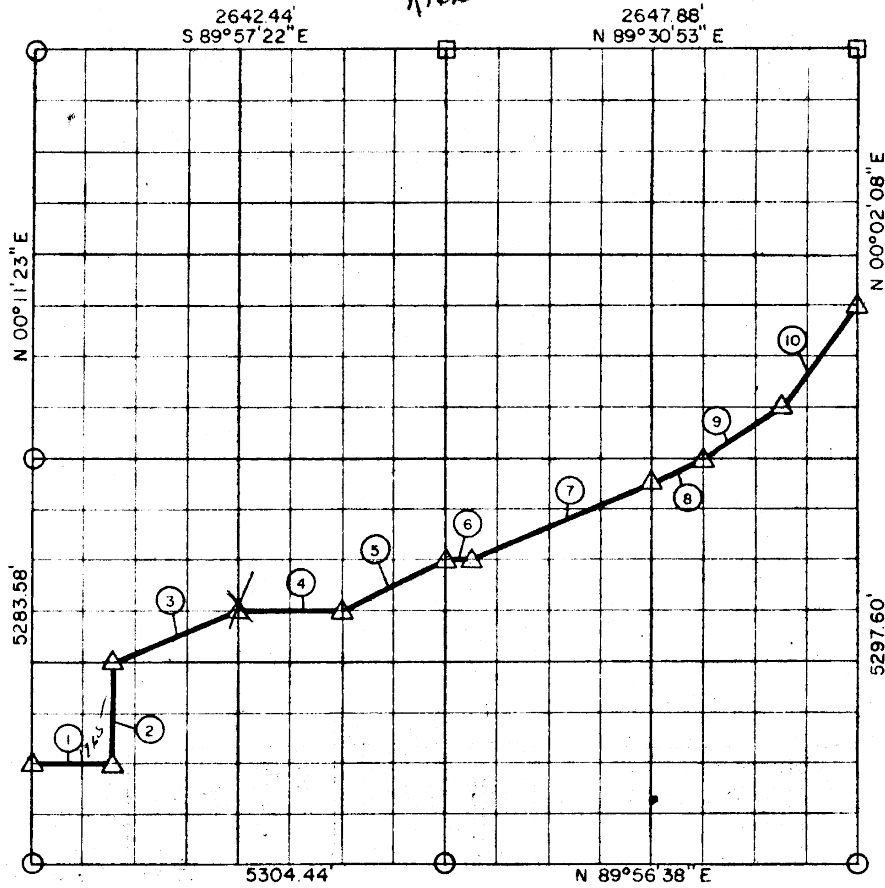


EC. 9, T 7 N, R16E, PITTSBURG COUN



Course No.	Distance	Bearing	Course No.	Distance	Bearing
1	497.06'	N 89° 57' 23" E			
2	660.34'	N 00° 10' 13" E			
3	892.31'	N 68° 15' 40" E			
4	662.29'	N 89° 58' 30" E			
5	740.45'	N 63° 31' 12" E			
6	165.66'	N 89° 46' 53" E			
7	1263.35'	N 66° 40' 42" E			
8	371.03'	N 63° 17' 01" E			
9	598.47'	N 56° 10' 03" E			
10	830.15'	N 36° 47' 45" E			
	6681.11				

Book No. E-975

Date: February, 1965

472

I, Jack R. Kalman, a Registered Professional Engineer, do hereby certify that the above plat is a true and accurate survey of Sec. 9, T 7 N, R16E as made under my supervision.

6,681.11

*Jack R. Kalman*  
 JACK R. KALMAN  
 Reg. Prof. Engr. No. 2786