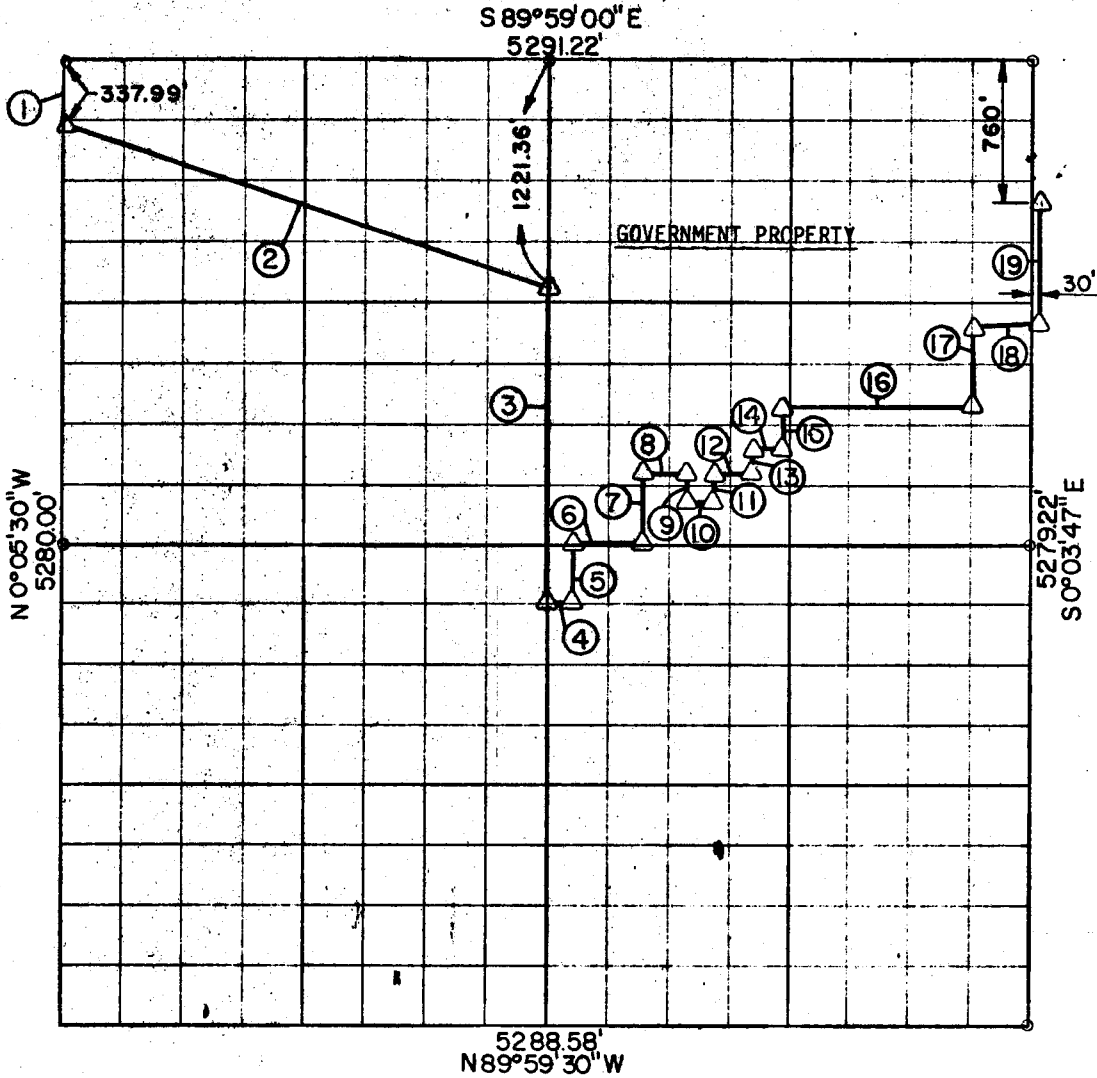


SEC. 13 T-8 -N R-14 -E COUNTY PITTSBURG



COURSE NUMBER	DISTANCE	BEARING	COURSE NUMBER	DISTANCE	BEARING
1	337.99	S 0° 05' 30" E			
2	2791.69	S 71° 32' 10.5" E			
3	1738.36	S 0° 04' 38" E			
4	164.90	S 89° 59' 08" E			
5	340.00	N 0° 04' 38" W			
6	360.00	S 89° 59' 08" E			
7	360.00	N 0° 04' 38" W			
8	220.00	S 89° 59' 08" E			
9	160.00	S 0° 04' 38" E			
10	140.00	S 89° 59' 08" E			
11	160.00	N 0° 04' 38" W			
12	200.00	S 89° 59' 08" E			
13	125.00	N 0° 04' 38" W			
14	160.00	S 89° 59' 08" E			
15	235.00	N 0° 04' 38" W			
16	1070.00	S 89° 59' 08" E			
17	468.61	N 0° 04' 38" W			
18	361.70	N 84° 41' 57" E			
19	637.50	N 0° 03' 47" W			

Field Book No. E1149 Date 8-12-71

POE AND ASSOCIATES, INC. - ENGINEERS

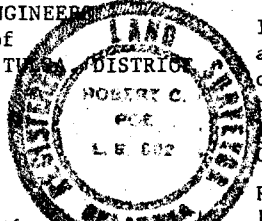
Under the Supervision of

U.S. ARMY CORPS OF ENGINEERS

CERTIFICATE OF SURVEY

I hereby certify that the above plat is a true and correct representation of the survey made in Section 13, T 8 N, R 14 E, Pittsburg County, Oklahoma

Robert C. Poe
Registered Land Surveyor



LEGEND

- ▲ MONUMENT
- ORIGINAL STONE
- IRON PIN