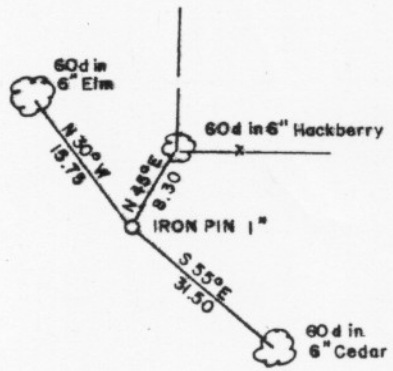
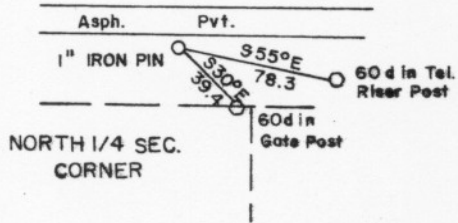
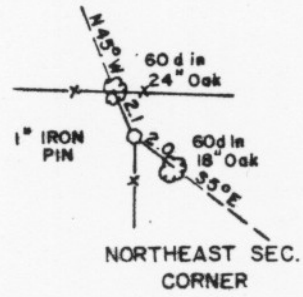
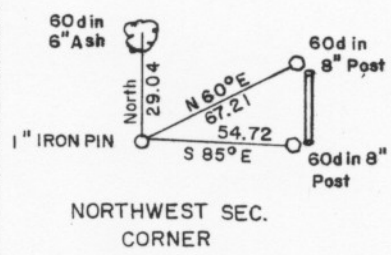


FILED _____ COUNTY _____
 BOOK _____, PAGE _____
 DATE _____

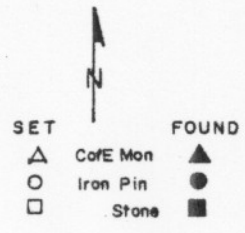
pg 2

PARTIAL BOUNDARY SURVEYS
 AREA F, EUFAULA LAKE
 Contract Number DACW56-76-C-0099

SEC. 1 , T 8 N , R 14 E M²INTOSH COUNTY,
 OKLAHOMA



G. W. DENNEY SURVEYING, inc.
 FOR
 TULSA DISTRICT
 CORPS OF ENGINEERS



I, G. W. DENNEY, hereby certify that this plat accurately represents my survey of the above section.
G.W. DENNEY
 G.W. DENNEY, Okla. L.S. 384