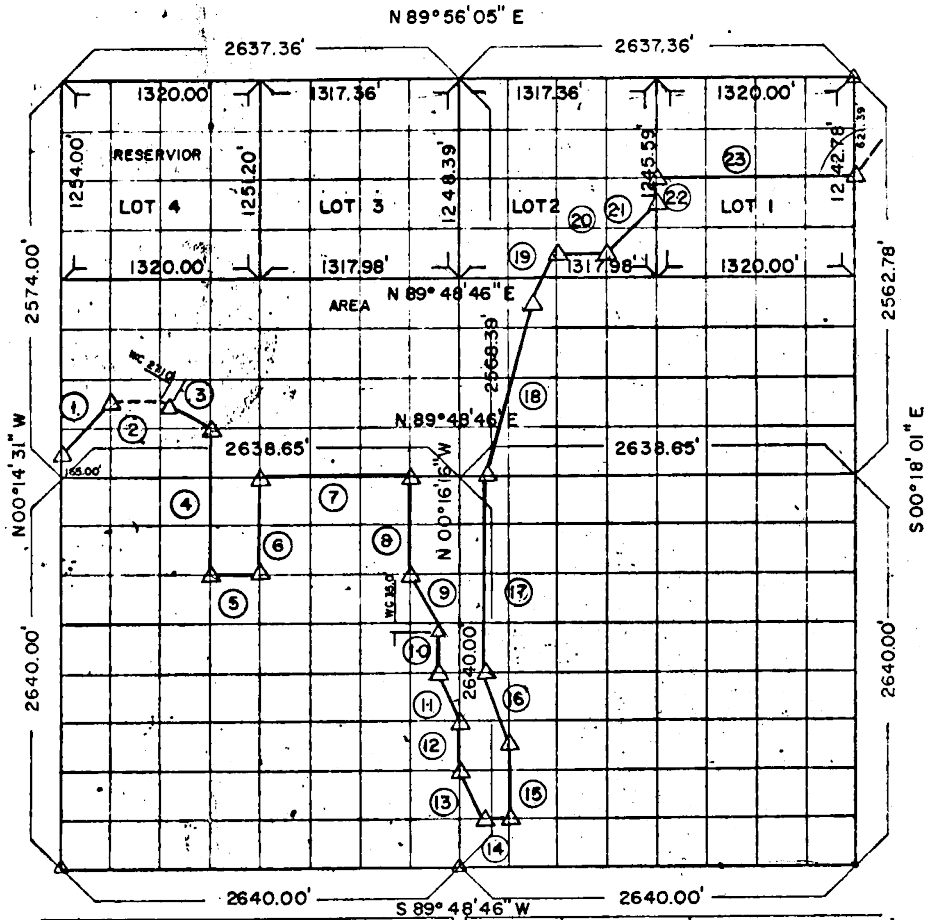


PARTIAL SURVEYS
EUFAUL RESERVOIR

Performed Under Contract Number DACW56-70-C-0103

SEC. 1 T-8-N R-15-E COUNTY PITTSBURG



Course N ^o	Distance	Bearing	Course N ^o	Distance	Bearing
1	466.39	N 44° 46' 35\" E	14	164.99	N 89° 48' 46\" E
2	329.90	N 89° 48' 46\" E	15	495.00	N 00° 16' 29\" W
3	368.94	S 63° 37' 15\" E	16	522.00	N 18° 41' 47\" W
4	990.00	S 00° 14' 32\" E	17	1320.00	N 00° 16' 22\" W
5	329.87	N 89° 48' 46\" E	18	1200.59	N 15° 39' 06\" E
6	660.00	N 00° 13' 19\" W	19	360.43	N 26° 54' 34\" E
7	989.10	N 89° 48' 46\" E	20	327.48	N 89° 49' 38\" E
8	660.00	S 00° 16' 03\" E	21	454.30	N 46° 33' 24\" E
9	369.13	S 26° 48' 32\" E	22	155.69	N 00° 17' 58\" W
10	330.00	S 00° 16' 09\" E	23	1320.00	N 89° 52' 26\" E
11	369.15	S 26° 48' 49\" E			
12	330.00	S 00° 15' 16\" E			
13	369.16	S 26° 49' 04\" E			

CERTIFICATE OF SURVEY
I HEREBY CERTIFY THAT THE
BEARING AND DISTANCE
REPRESENTATION OF
THE SURVEY MADE IN SECTION
1 T-8-N-R-15-E, PITTSBURG
COUNTY, OKLAHOMA

Field Book N^o E-1115 Date 8 OCT 1970

FULLER ASSOCIATES
Consulting Professional Engineers

Under the Supervision of
U.S. ARMY ENGINEER DISTRICT, TULSA
CORPS OF ENGINEERS

SHEET 1 of 1

LEGEND

- ▲ MONUMENT
- ORIGINAL CORNER
- IRON PIN

Morris Fuller

365