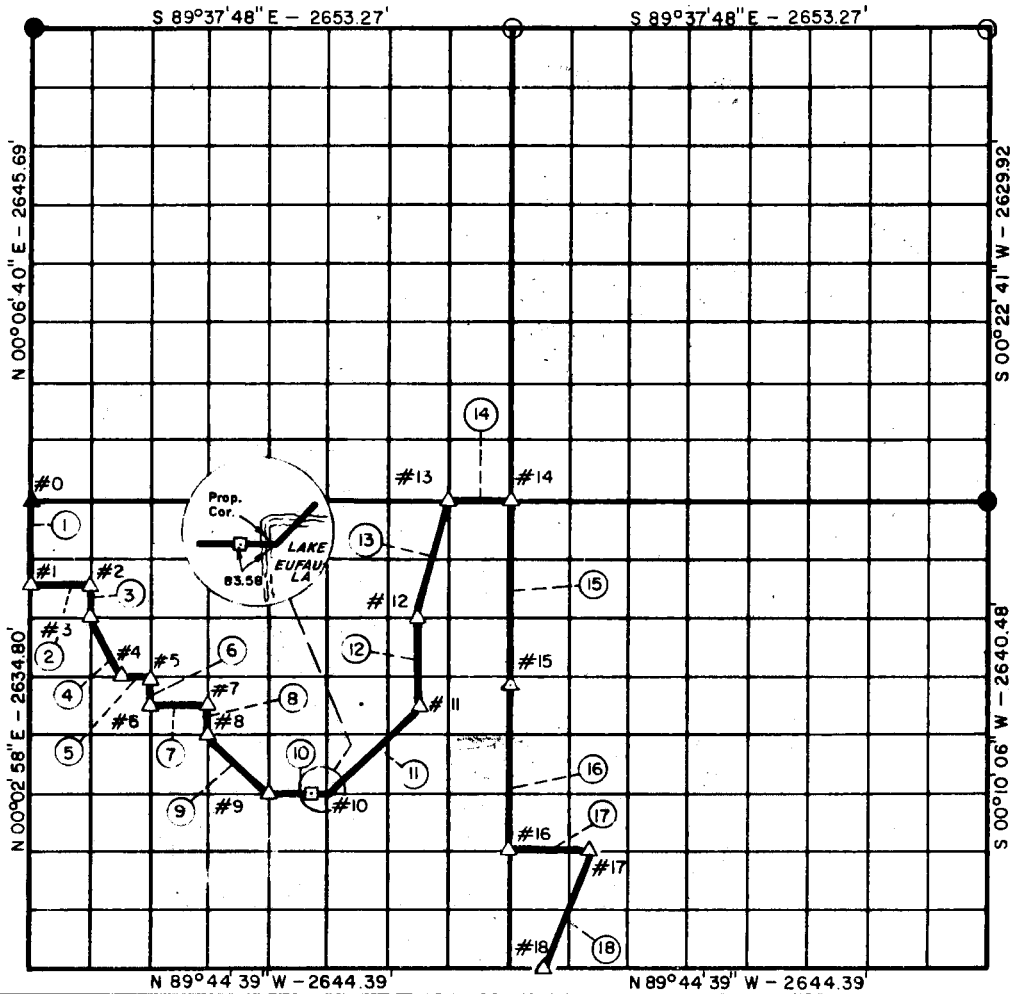


**PARTIAL PRIMARY SURVEYS
AREA EUFALA LAKE
CANADIAN RIVER, OKLAHOMA**

Performed Under Contract Number:

SEC. 25 T-8-N R-15-E COUNTY PITTSBURG



Void

Beginning Coordinates at SE Corner	North	East
	19,976.41	25,288.73

Course No.	Distance	Bearing	Course No.	Distance	Bearing
1	494.03'	S 00°02'58" W	13	679.65'	N 14°15'30" E
2	331.14'	S 89°47'39" E	14	331.28'	S 89°48'21" E
3	164.70'	S 00°03'56" W	15	1025.00'	S 00°10'36" W
4	369.03'	S 26°34'50" E	16	953.22'	S 00°10'36" W
5	165.50'	S 89°46'58" E	17	421.28'	S 89°45'35" E
6	164.72'	S 00°04'53" W	18	704.06'	S 20°44'46" W
7	330.96'	S 89°46'44" E			
8	164.74'	S 00°05'50" W			
9	467.46'	S 44°57'03" E			
10	330.82'	S 89°46'02" E			
11	700.04'	N 45°17'43" E			
12	494.46'	N 00°09'09" E			

- LEGEND**
- ▲ MONUMENT SET
 - ▲ MONUMENT FD.
 - OKLA. ST. HWY. DEPT. COR.
 - IRON PINS SET
 - IRON PINS FD.
 - STONES FOUND
 - REF. MON. SET

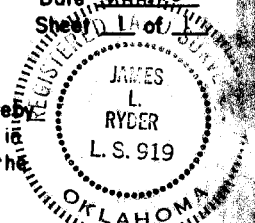
TOPOGRAPHIC ENGINEERING CO. 439
Under the Supervision of
DEPARTMENT OF THE ARMY
TULSA DISTRICT CORPS OF ENGINEERS

Field Book No. E1217
Date 7/22/75
Sheet 1 of 1

SURVEYOR'S CERTIFICATION:

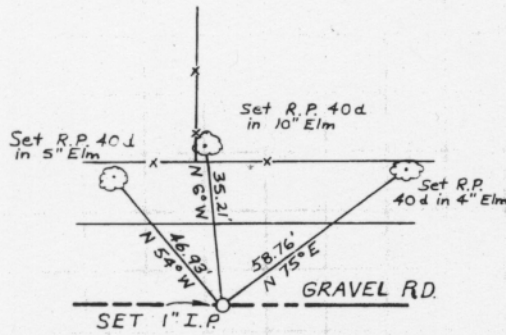
I, James L. Ryder, Oklahoma Registered Land Surveyor Number 919, do hereby certify that this plat represents the results of an on the ground survey made in Section 25, T8-N-R15E, under my supervision and is true and correct to the best of my knowledge.

James L. Ryder



AREA "C" EUFAULA LAKE
CANADIAN RIVER, OKLAHOMA
SECTION AND QUARTER SECTION CORNER
REFERENCES FOR
SECTION 25, T 8 N-R 15 E
PITTSBURG COUNTY, OKLAHOMA

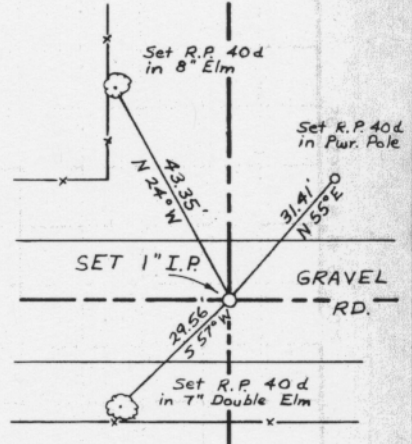
(2)



See Section 26

NW COR.

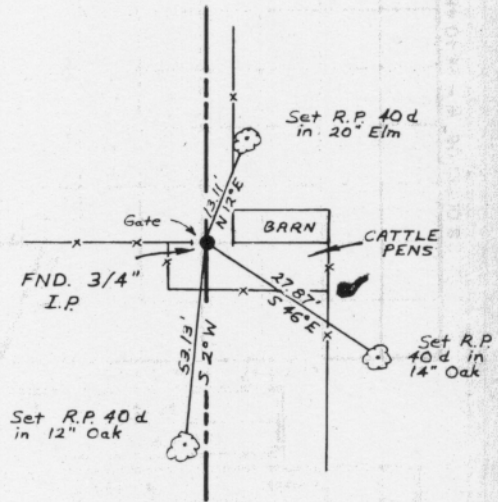
N/4 COR.



NE COR.

See Section 26

W/4 COR.



E/4 COR.

Set By Others

SE COR.

Set By Others

SW COR.

Set By Others

S/4 COR.

LEGEND

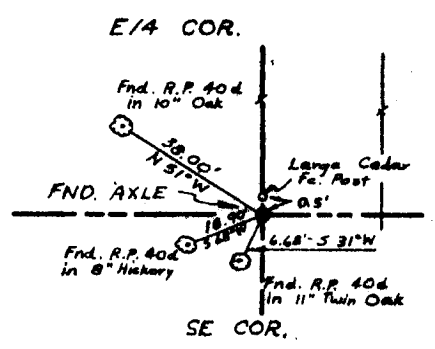
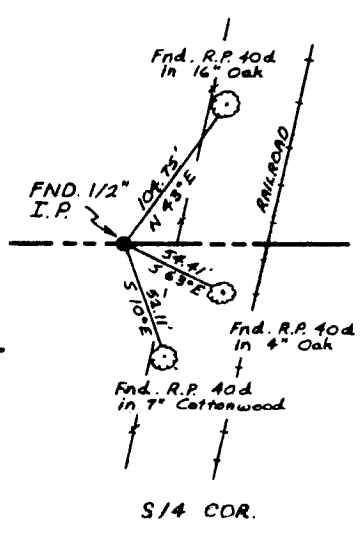
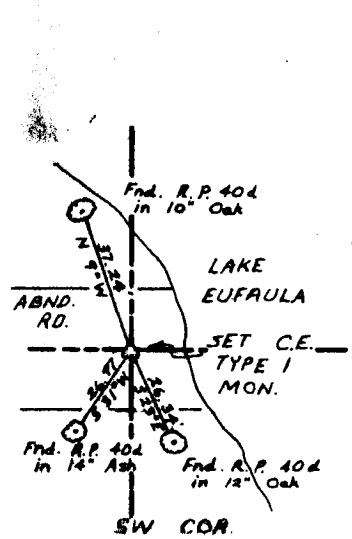
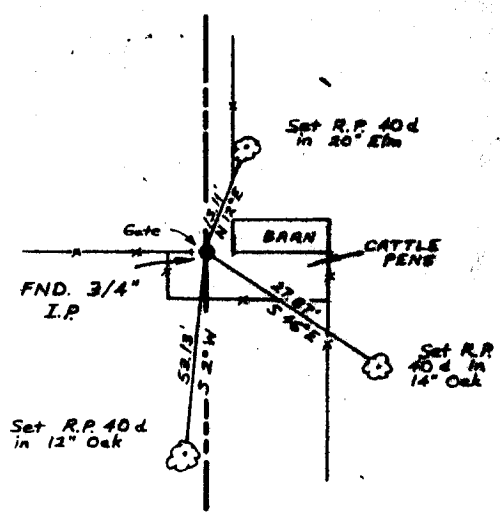
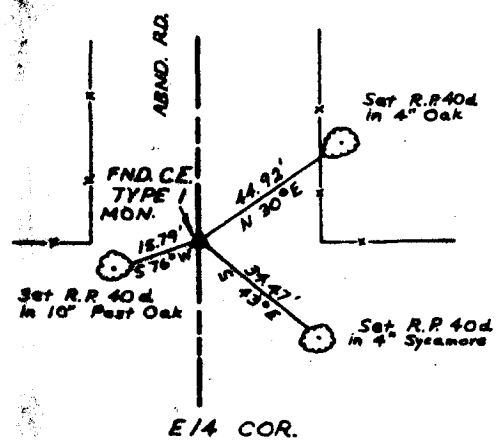
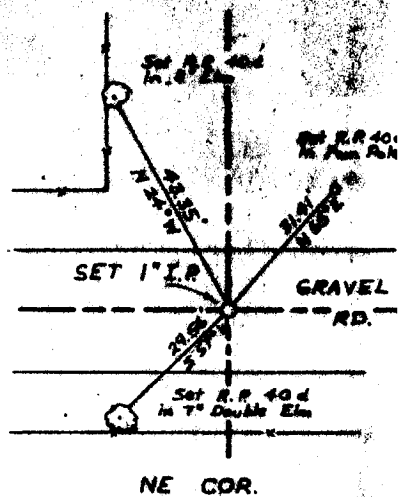
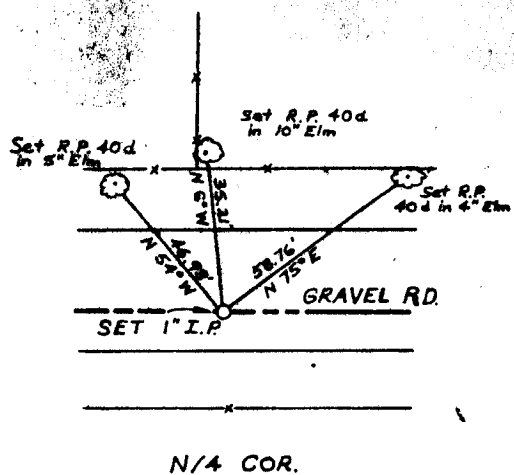
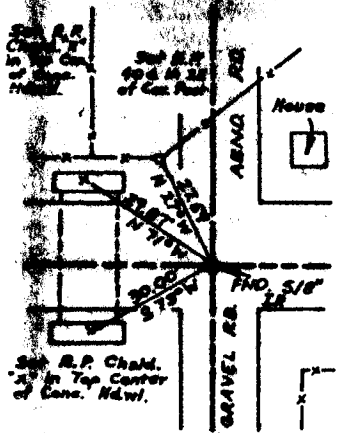
- △ MONUMENT SET
- ▲ MONUMENT FND.
- OKLA. ST. HWY. DEPT. COR.
- IRON PINS SET
- IRON PINS FND.
- STONES FND.
- REF. MON. SET

AREA "C" EUFAULA LAKE
 CANADIAN RIVER, OKLAHOMA
 SECTION AND QUARTER SECTION CORNER
 REFERENCES FOR
 SECTION 25, T 8 N-R 15 E
 PITTSBURG COUNTY, OKLAHOMA

BOOK NO.
 - 1217
 DATE: 7/22/75

NOTE:
 THIS PLAN REVISION 8/10/75
 AMENDS PREVIOUS PLAN FOR THIS
 SECTION AS FILED IN PL. 503
 BOOK 282, THIS COUNTY.

(3)



- LEGEND
- △ MONUMENT SET
 - MONUMENT FND.
 - OKLA. ST. HWY. DEPT. COR.
 - IRON PINS SET
 - IRON PINS FND.
 - STONES FND.
 - REF. MON. SET