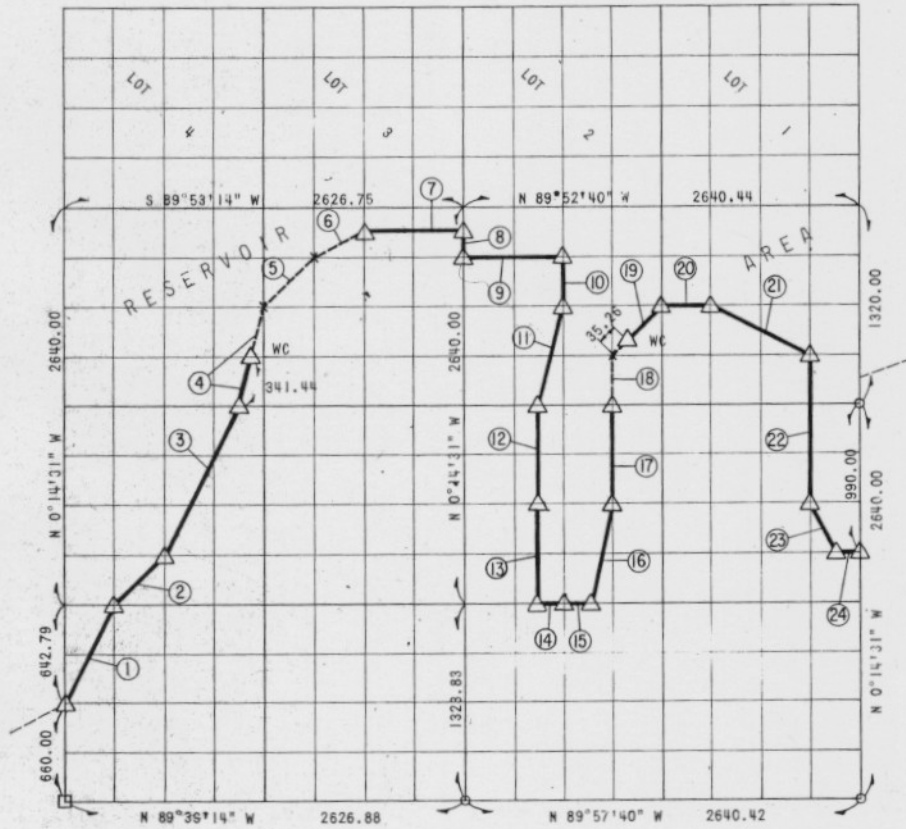


TUFULA RESERVOIR

CANADIAN RIVER, OKLAHOMA

PARTIAL BOUNDARY SURVEYS OF SECTION 2, T 8 N, R 15 E, PITTSBURG COUNTY



COURSE	DISTANCE	BEARING	COURSE	DISTANCE	BEARING
1	721.14	N 26°50'35" E	17	660.00	N 0°14'31" W
2	465.00	N 44°40'41" E	18	330.00	N 0°14'31" E
3	1104.75	N 26°14'00" E	19	465.25	N 44°56'41" E
4	679.75	N 13°44'02" E	20	330.06	S 89°52'41" E
5	465.00	N 44°40'41" E	21	739.87	S 63°23'24" E
6	367.14	N 65°16'50" E	22	990.00	S 0°14'31" E
7	656.69	N 89°53'14" W	23	369.90	S 26°44'16" E
8	165.00	S 0°14'31" E	24	165.03	S 89°52'41" E
9	600.11	S 89°52'41" E			
10	330.00	S 0°14'31" E			
11	679.30	S 13°45'03" W			
12	660.00	S 0°14'31" E			
13	660.00	S 0°14'31" E			
14	165.03	S 89°52'41" E			
15	165.03	S 89°52'41" E			
16	679.30	N 13°49'03" E			

NOTE: REVISED MAY 1973 TO CORRECT COURSES 13 & 14 TO MATCH LEGAL DESCRIPTIONS.

FIELD BOOK E 1092

CONTRACT NO. DACW56-68-C-9244
 PERFORMED UNDER SUPERVISION OF
 US ARMY ENGINEER DISTRICT, TULSA
 CORPS OF ENGINEERS

By
SLADE & ASSOCIATES

CONSULTING ENGINEERS
 1001 S. GRAND AVENUE - TULSA, OKLA.
 TELEPHONE 331-2000

LEGEND
 △ C E MONUMENT ● HWY DEPT MON
 □ ORIGINAL STONE ○ IRON PIN
 X INACCESSIBLE POINT

CERTIFICATE OF SURVEY

THIS DRAWING CORRECTLY REPRESENTS A SECTION SURVEY COMPLETED UNDER MY SUPERVISION SEPTEMBER 1968

James L. Slade 364
 JAMES L. SLADE, REGISTERED PROFESSIONAL ENGINEER