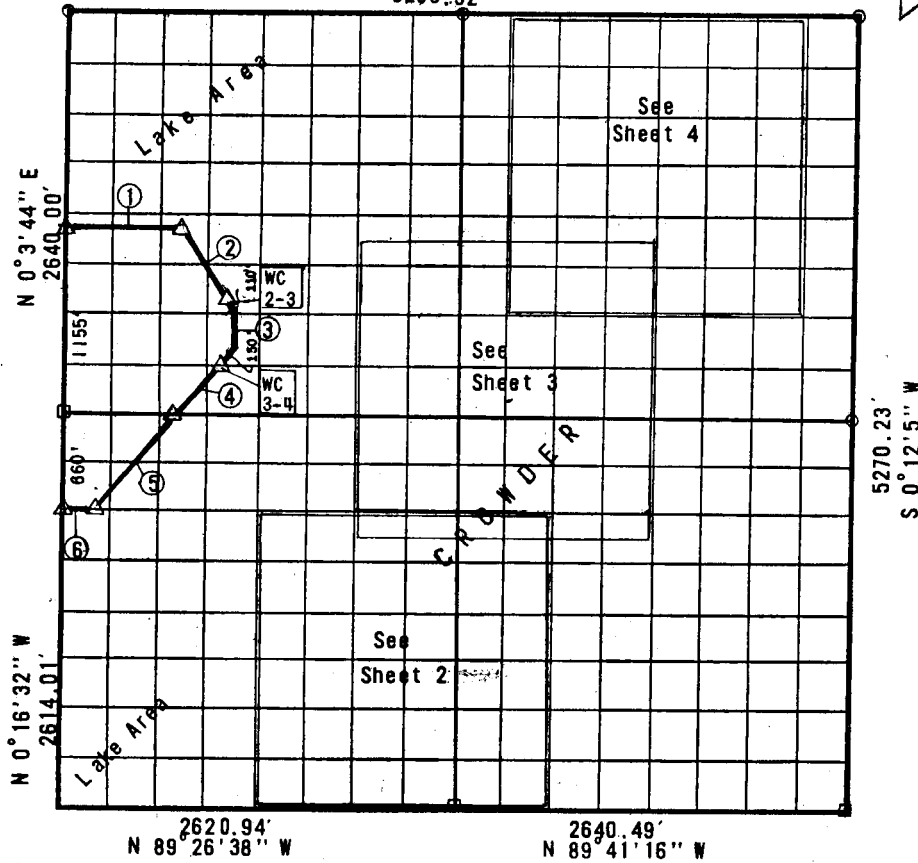


PARTIAL SURVEY SURVEYS T 1 OF 4
 PAULA RESERVOIR, CANADIAN RIVER, OKLAHOMA
 SEC. 36, T-8-N, R-15-E, PITTSBURG COUNTY, OKLAHOMA
 S 89° 44' 40" E
 5289.52'



COURSE NO.	DISTANCE	BEARING	COURSE NO.	DISTANCE	BEARING
1	825.00	S 89° 49' 41" E			
2	598.90	S 34° 4' 49" E			
3	184.83	S 0° 3' 44" W			
4	617.44	S 39° 51' 37" W			
5	857.64	S 39° 51' 37" W			
6	213.07	N 89° 49' 40" W			

Field Book No. E 1156 Date 6-9-71

BY GROSSMAN & KEITH ENGINEERING CO.

FOR

DEPARTMENT OF THE ARMY, CORPS OF ENGINEERS, TULSA DISTRICT
 UNDER CONTRACT NO. DACW 56-71-C-0119

I, Guy N. Keith, a Registered Land Surveyor in the State of Oklahoma, do hereby certify that the above plot is a true and accurate survey of Section 36, T-8-N, R-15-E as made under my supervision.

Guy N. Keith
 Reg. No. 541 (Oklahoma)

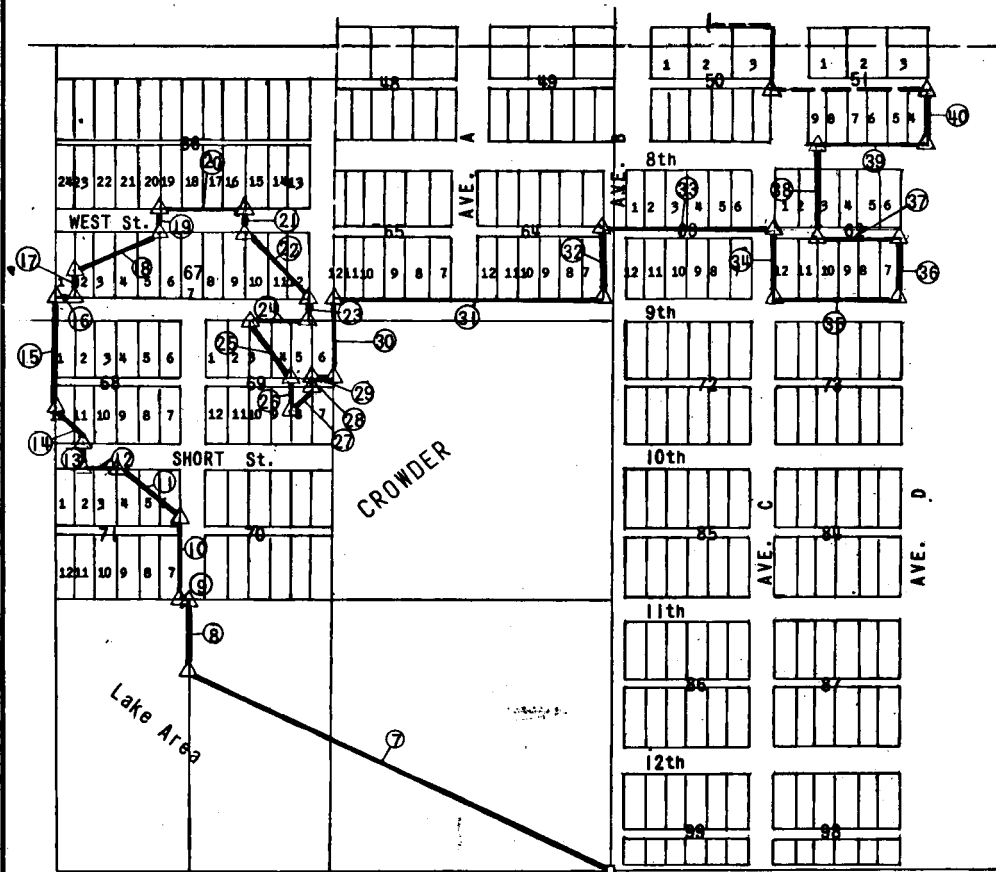
LEGEND

- △ Std. C. of E. Conc. Monument
- Iron Pin
- Original Pin

448

PL 1 OF 4

PARTIAL CITY SURVEYS
 TULSA RESERVOIR, TULSA RIVER, OKLA
 SEC. 36, T-8-N, R-15-E, PITTSBURG COUNTY, OKLAHOMA



COURSE NO.	DISTANCE	BEARING	COURSE NO.	DISTANCE	BEARING
7	1096.97	N 64° 18' 24" W	24	115.00	N 89° 54' 33" W
8	185.00	N 0° 5' 27" E	25	174.90	S 25° 18' 8" E
9	30.00	N 89° 54' 33" W	26	66.00	S 0° 5' 27" W
10	200.00	N 0° 5' 27" E	27	70.71	N 45° 5' 27" E
11	180.28	N 56° 13' 9" W	28	16.00	N 0° 5' 27" E
12	75.00	N 89° 54' 33" W	29	50.00	S 89° 54' 33" E
13	60.00	N 0° 5' 27" E	30	218.00	N 0° 5' 27" E
14	103.28	N 46° 28' 43" W	31	860.00	S 89° 54' 33" E
15	289.00	N 0° 5' 27" E	32	158.00	N 0° 5' 27" E
16	50.00	S 89° 54' 33" E	33	410.00	S 89° 54' 33" E
17	72.00	N 0° 5' 27" E	34	158.00	S 0° 5' 27" W
18	211.90	N 70° 48' 3" E	35	300.00	S 89° 54' 33" E
19	60.00	N 0° 5' 27" E	36	142.00	N 0° 5' 27" E
20	200.00	S 89° 54' 33" E	37	200.00	N 89° 54' 33" W
21	60.00	S 0° 5' 27" W	38	218.00	N 0° 5' 27" E
22	206.55	S 46° 28' 43" E	39	250.00	S 89° 54' 33" E
23	60.00	S 0° 5' 27" W	40	140.00	N 0° 5' 27" E

Field Book No. E 1156

Date 6-9-71

B. GROSSMAN & KEITH ENGINEERING CO.

FOR

DEPARTMENT OF THE ARMY, CORPS OF ENGINEERS, TULSA DISTRICT
 UNDER CONTRACT NO. DACW 56-71-C-0119

I, Guy N. Keith, a Registered Land Surveyor in the State of Oklahoma, do hereby certify that the above plot is a true and accurate survey of Section 36, T-8-N, R-15-E as made under my supervision.

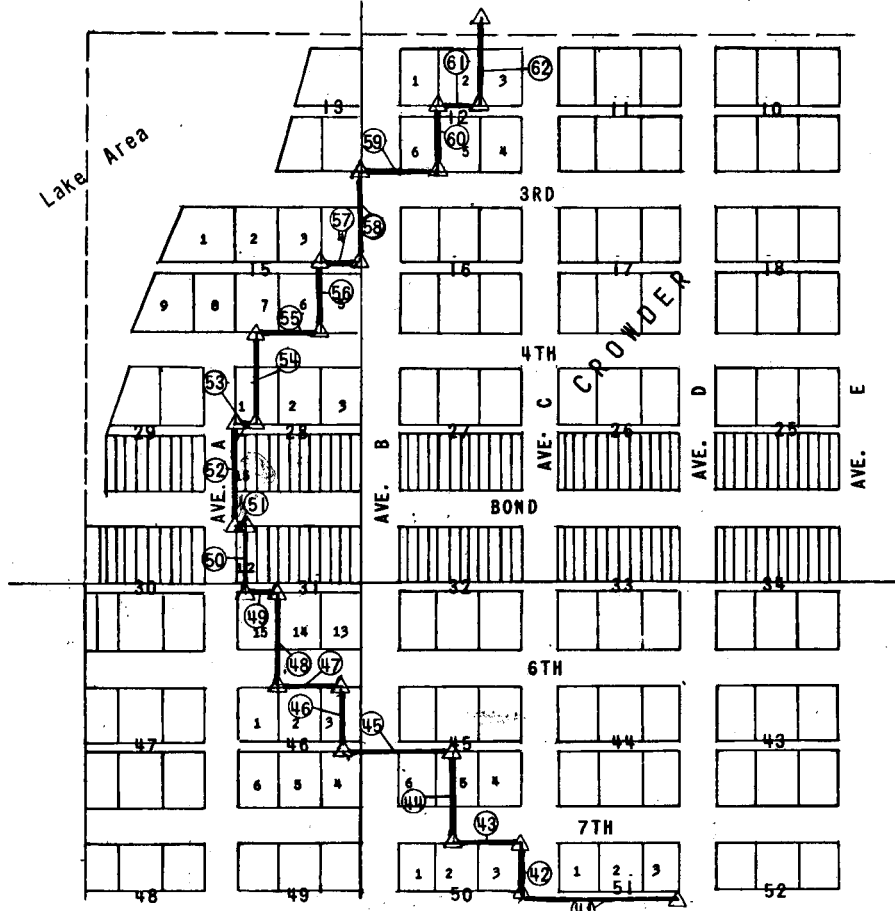
LEGEND

- △ Std. C. of E. Conc Monument
- Iron Pin
- Original Pin

Guy N. Keith
 No. 541 (Oklahoma)

448

PARTIAL SURVEYS T 3 OF 4
 OKLAHOMA RESERVOIR, ADIAN RIVER, OKL. A
 SEC. 36, T-8-N, R-15-E, PITTSBURG COUNTY, OKLAHOMA



COURSE NO.	DISTANCE	BEARING	COURSE NO.	DISTANCE	BEARING
41	380.00	N 89° 54' 33" W	58	220.00	N 0° 5' 27" E
42	156.00	N 0° 5' 27" E	59	180.00	S 89° 54' 33" E
43	150.00	N 89° 54' 33" W	60	160.00	N 0° 5' 27" E
44	220.00	N 0° 5' 27" E	61	100.00	S 89° 54' 33" E
45	280.00	N 89° 54' 33" W	62	220.00	N 0° 5' 27" E
46	160.00	N 0° 5' 27" E			
47	162.50	N 89° 54' 33" W			
48	220.00	N 0° 5' 27" E			
49	62.50	N 89° 54' 33" W			
50	160.00	N 0° 5' 27" E			
51	105.00	N 89° 54' 33" W			
52	260.00	N 0° 5' 27" E			
53	130.00	S 89° 54' 33" E			
54	220.00	N 0° 5' 27" E			
55	150.00	S 89° 54' 33" E			
56	160.00	N 0° 5' 27" E			
57	100.00	S 89° 54' 33" E			

Field Book No. E 1156

Date 8-9-71

BY GROSSMAN & KEITH ENGINEERING CO.

FOR

DEPARTMENT OF THE ARMY, CORPS OF ENGINEERS, TULSA DISTRICT
 UNDER CONTRACT NO. DACW 56-71-C-0119

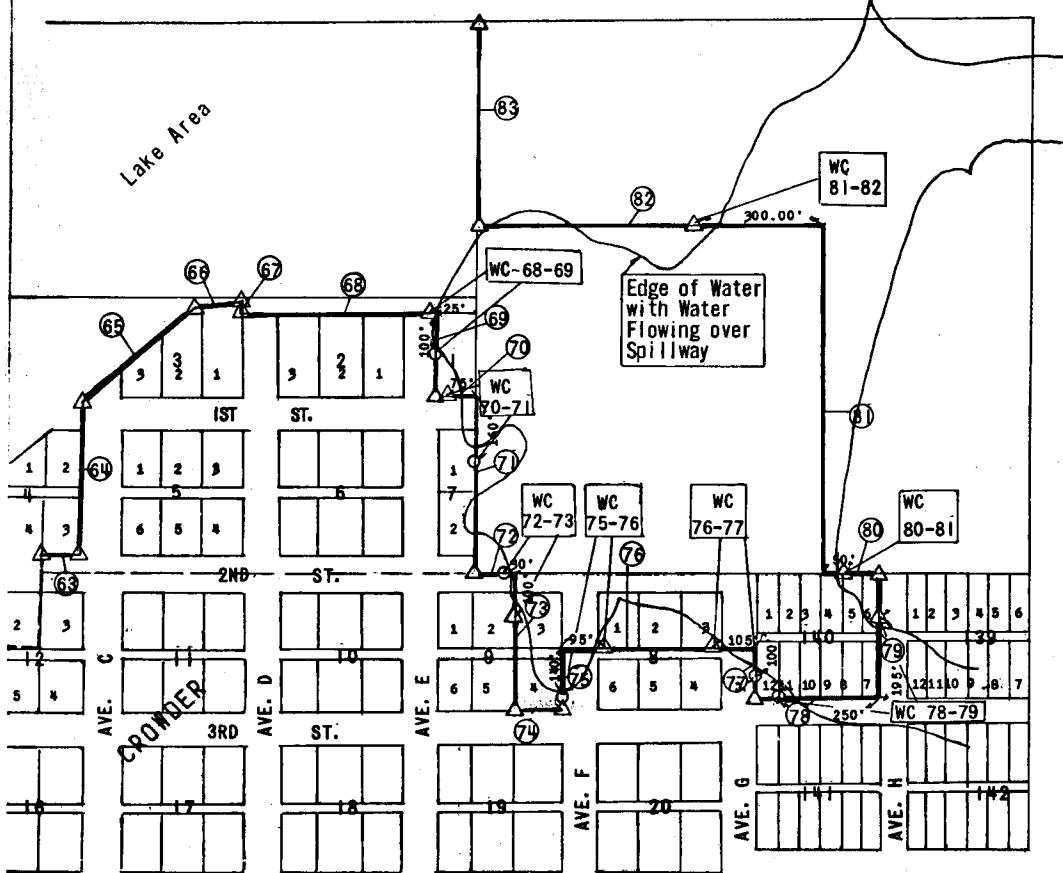
I, Guy N. Keith, a Registered Land Surveyor in the State of Oklahoma, do hereby certify that the above plat is a true and accurate survey of Section 36, T-8-N, R-15-E as made under my supervision.

Guy N. Keith
 Reg. No. 341 (Oklahoma)

LEGEND

- Δ Std C of E Conc Monument
- Iron Pin
- Original Pin

PARTIAL SURVEY SURVEYS T 4 of 4
 AULA RESERVOIR, ADIAN RIVER, OKLA
 SEC. 36, T-8-N, R-15-E, PITTSBURG COUNTY, OKLAHOMA



COURSE NO.	DISTANCE	BEARING	COURSE NO.	DISTANCE	BEARING
63	100.00	S 89° 54' 33" E	80	136.08	N 89° 50' 1" W
64	347.40	N 0° 5' 27" E	81	820.24	N 0° 12' 14" E
65	340.07	N 55° 30' 46" E	82	826.74	N 89° 46' 40" W
66	102.61	N 77° 8' 17" E	83	492.63	N 0° 12' 30" E
67	26.80	S 0° 5' 27" W			
68	460.00	S 89° 49' 14" E			
69	155.90	S 0° 10' 46" W			
70	105.62	S 89° 55' 45" E			
71	444.90	S 0° 12' 30" W			
72	95.53	S 89° 50' 1" E			
73	315.00	S 0° 5' 27" W			
74	100.00	S 89° 54' 33" E			
75	160.00	N 0° 5' 27" E			
76	467.06	S 89° 54' 33" E			
77	145.75	S 0° 12' 4" W			
78	300.00	S 89° 50' 1" E			
79	300.00	N 0° 12' 4" E			

Field Book No. E 1156

Date 6-9-71

BY GROSSMAN & KEITH ENGINEERING CO.

FOR

DEPARTMENT OF THE ARMY, CORPS OF ENGINEERS, TULSA DISTRICT
 UNDER CONTRACT NO. DACW 56-71-C-0119

I, Guy N Keith, a Registered Land Surveyor in the State of Oklahoma, do hereby certify that the above plat is a true and accurate survey of Section 36, T-8-N, R-15-E as made under my supervision.

Guy N Keith
 Reg. No. 541 (Oklahoma)

LEGEND

- Δ Std. C. of E. Conc. Monument
- Iron Pin
- Original Pin