

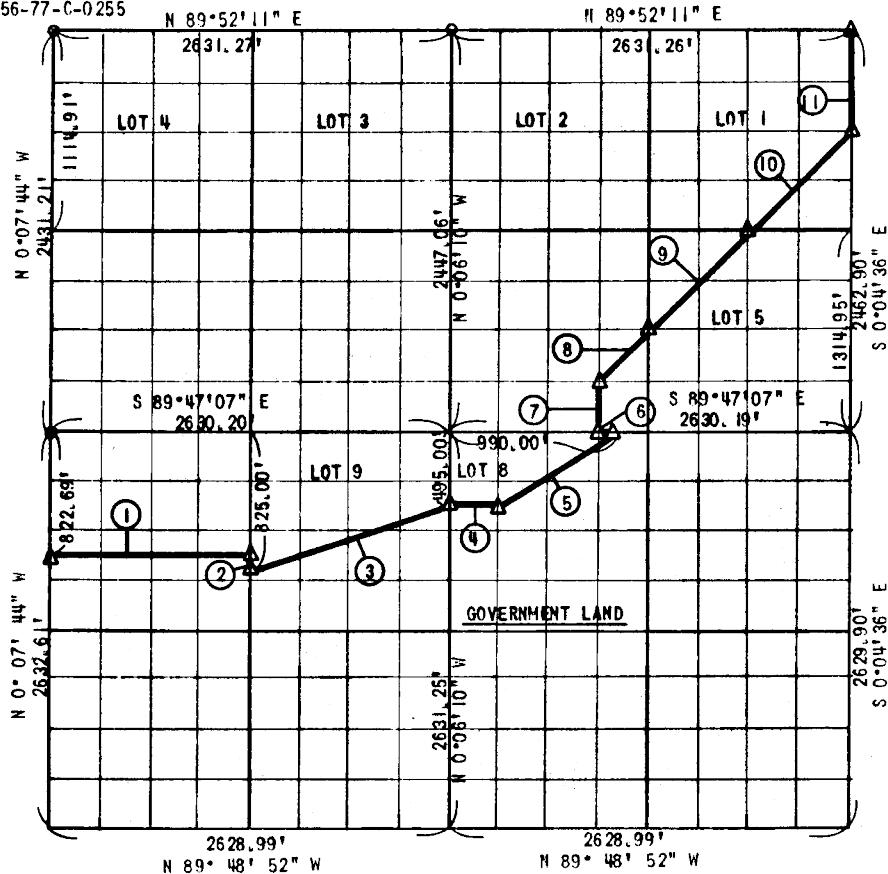
PARTIAL BOL ARY SURVEY

EUFULA LAKE

SECTION 5, T 8 N, R 15 E

MCINTOSH COUNTY

Performed Under Contract No.  
DACH 56-77-C-0255



Course No.	Distance	Bearing	Course No.	Distance	Bearing
1	1314.91'	S 89°47'40" E			
2	2.52'	S 0°06'49" E			
3	1353.41'	N 76°08'20" E			
4	330.00'	S 89°47'07" E			
5	822.80'	N 53°13'51" E			
6	3.68'	N 89°47'06" W			
7	328.84'	N 0°05'35" W			
8	463.75'	N 45°03'43" E			
9	927.49'	N 45°04'20" E			
10	927.48'	N 45°05'10" E			
11	490.48'	N 0°04'36" W			

CERTIFICATE OF SURVEY

Field Book No. E-1381

Date: March 15, 1978

I hereby certify that the above plat is a true and correct representation of the survey made in Section 5, T8N, R15E, Mcintosh County, Oklahoma.

SULLIVAN & GILBERT, INC.

Consulting Engineers

Under the supervision of

US. ARMY ENGINEER DISTRICT, TULSA  
CORPS OF ENGINEERS

LEGEND

△ C OF E MON.

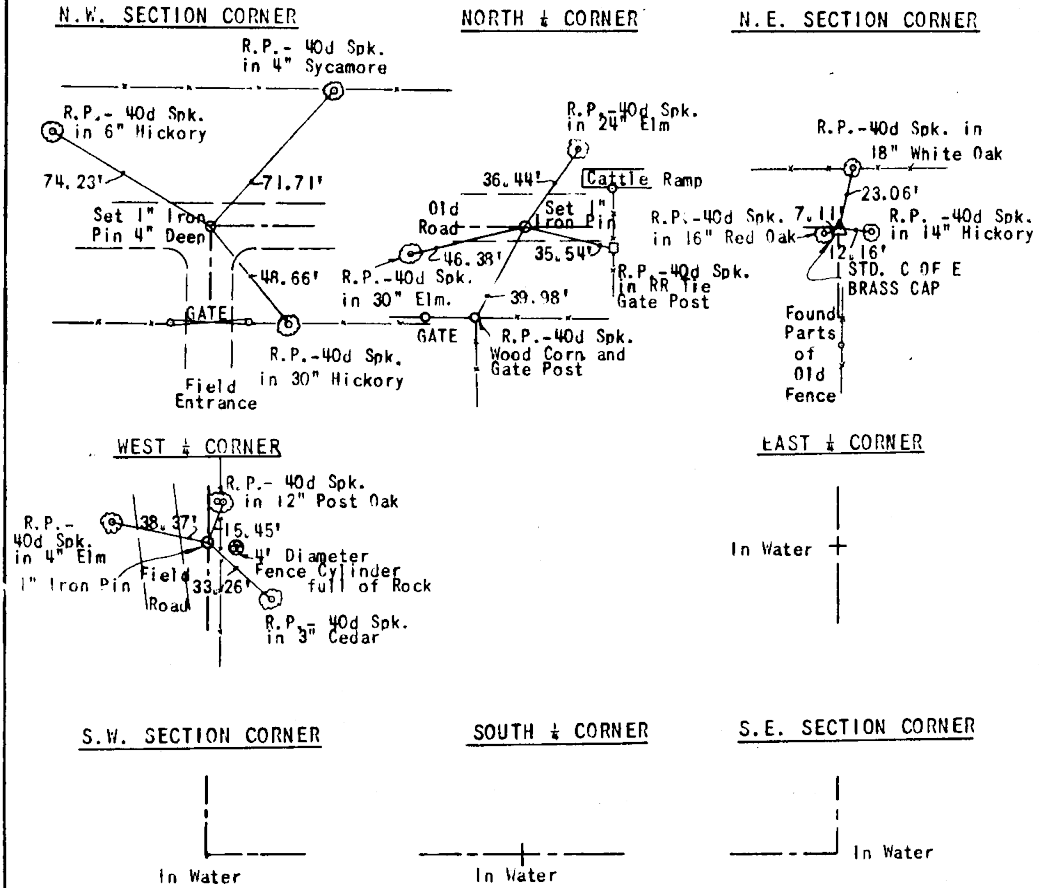
○ IRON PIN

□ ORIG. STONE

*[Signature]*  
REGISTERED LAND SURVEYOR L.S. #122

EUFULA LAKE

SECTION AND QUARTER SECTION  
 CORNER REFERENCES FOR  
 SECTION 5, T 8 N, R 15 E, McINTOSH COUNTY



Scale: 1"=50'  
 Field Book No. E-1381  
 Sullivan and Gilbert, Inc.