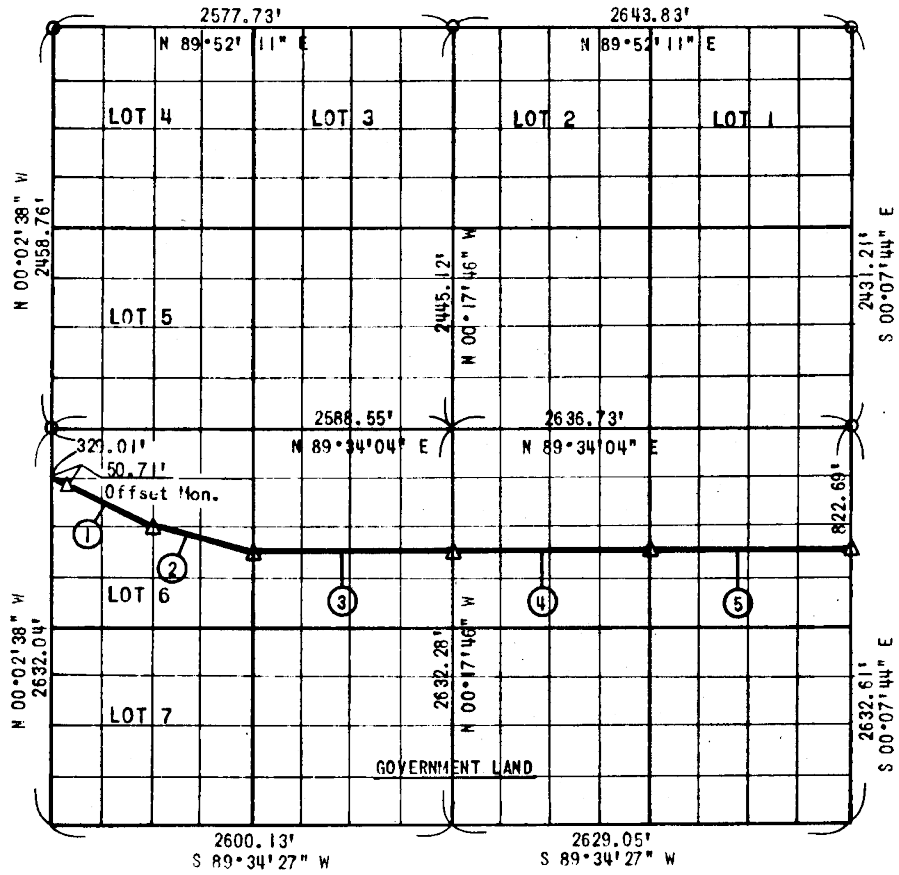


PARTIAL BOUNDARY SURVEY  
EUFALA LAKE  
SECTION 6, T 8 N, R 15 E  
MCINTOSH COUNTY

Performed Under Contract No.  
DACW 56-77-C-0255



Course No.	Distance	Bearing	Course No.	Distance	Bearing
1	695.83'	S 62°12'49" E			
2	678.78'	S 76°24'18" E			
3	1316.52'	N 89°34'11" E			
4	1317.16'	N 89°34'11" E			
5	1317.17'	N 89°34'11" E			

CERTIFICATE OF SURVEY      Field Book No. E-1380      Date: March 15, 1978

I hereby certify that the above plat is a true and correct representation of the survey made in Section 6, T 8 N, R 15 E, McIntosh County, Oklahoma.

SULLIVAN & GILBERT, INC.  
Consulting Engineers

LEGEND

Under the supervision of  
U. S. ARMY ENGINEER DISTRICT, TULSA  
CORPS OF ENGINEERS

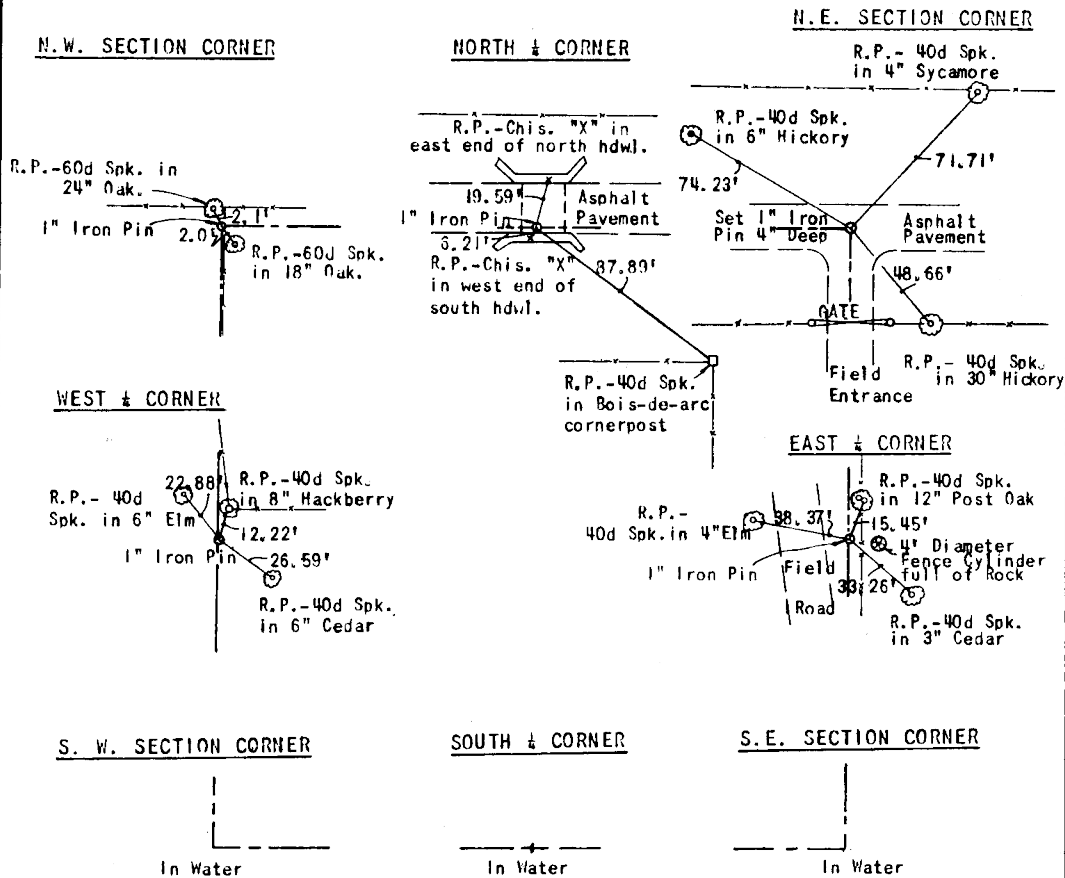
- △ C OF E MON.
- IRON PIN
- ORIG. STONE

*(Signature)*  
REGISTERED LAND SURVEYOR L. S. #122

EUFULA LAKE

SECTION AND QUARTER SECTION  
CORNER REFERENCES FOR

SECTION G, T 3 N, R 15 E, McINTOSH COUNTY



Scale: 1"=50'  
 Field Book No. E-1380  
 Sullivan and Gilbert, Inc.