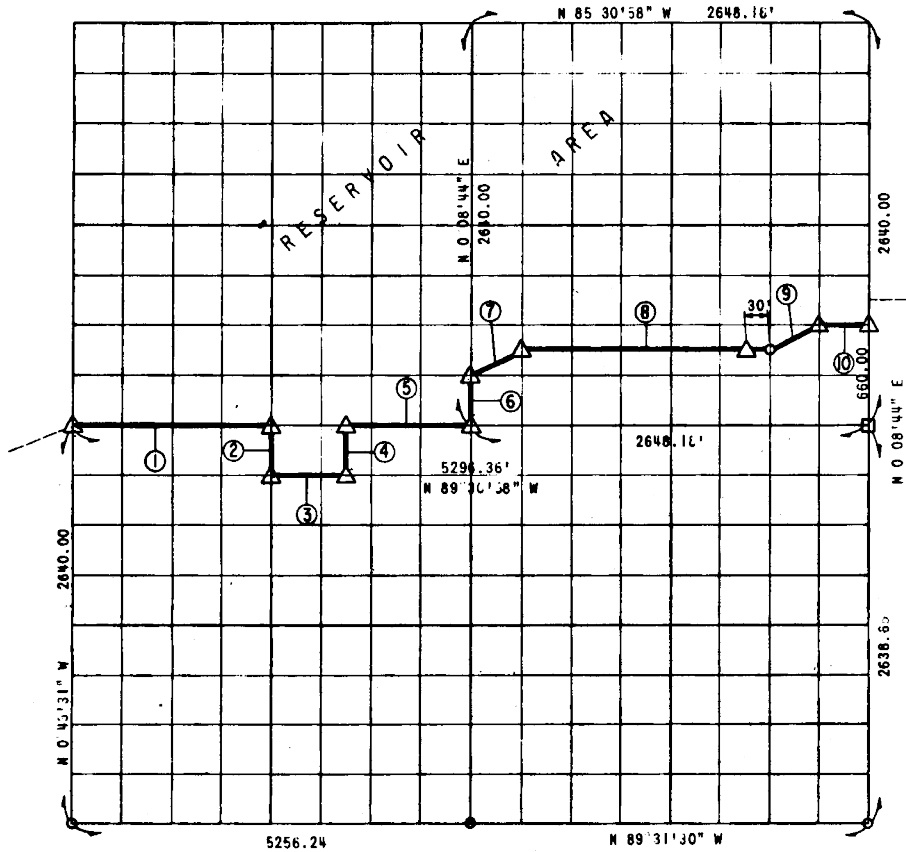


EUFAULA & ERVOIR  
CANADIAN R. OKLAHOMA

PARTIAL BOUNDARY SURVEYS OF SECTION 9 T 8 N R 15 E PITTSBURG COUNTY



COURSE	DISTANCE	BEARING	COURSE	DISTANCE	BEARING
1	1324.09	S 89° 30' 58" E			
2	330.00	S 1° 09' 58" W			
3	496.54	S 89° 30' 58" E			
4	330.00	N 1° 09' 58" W			
5	827.56	S 89° 30' 58" E			
6	330.00	N 0° 08' 44" E			
7	369.00	N 63° 55' 22" E			
8	1655.12	S 89° 30' 58" E			
9	369.00	N 63° 55' 22" E			
10	331.02	S 89° 30' 58" E			
	<u>6362.53</u>	6235'			

FIELD BOOK NO. E 1091

LEGEND  
 △ C E MONUMENT    ● HWY DEPT MON  
 □ ORIGINAL STONE    ○ IRON PIN

384

CONTRACT NO. DACW56-68-C-9244

PERFORMED UNDER SUPERVISION OF  
 US ARMY ENGINEER DISTRICT, TULSA  
 CORPS OF ENGINEERS

BY  
**SLADE & ASSOCIATES**

CONSULTING ENGINEERS  
 2000 W. 10TH ST. TULSA, OKLA. 74104  
 PHONE 335-1111

CERTIFICATE OF SURVEY

THIS DRAWING CORRECTLY REPRESENTS A SECTION SURVEY  
 COMPLETED UNDER MY SUPERVISION SEPTEMBER 1968

*James L. Slade*

JAMES L. SLADE, REGISTERED PROFESSIONAL ENGINEER