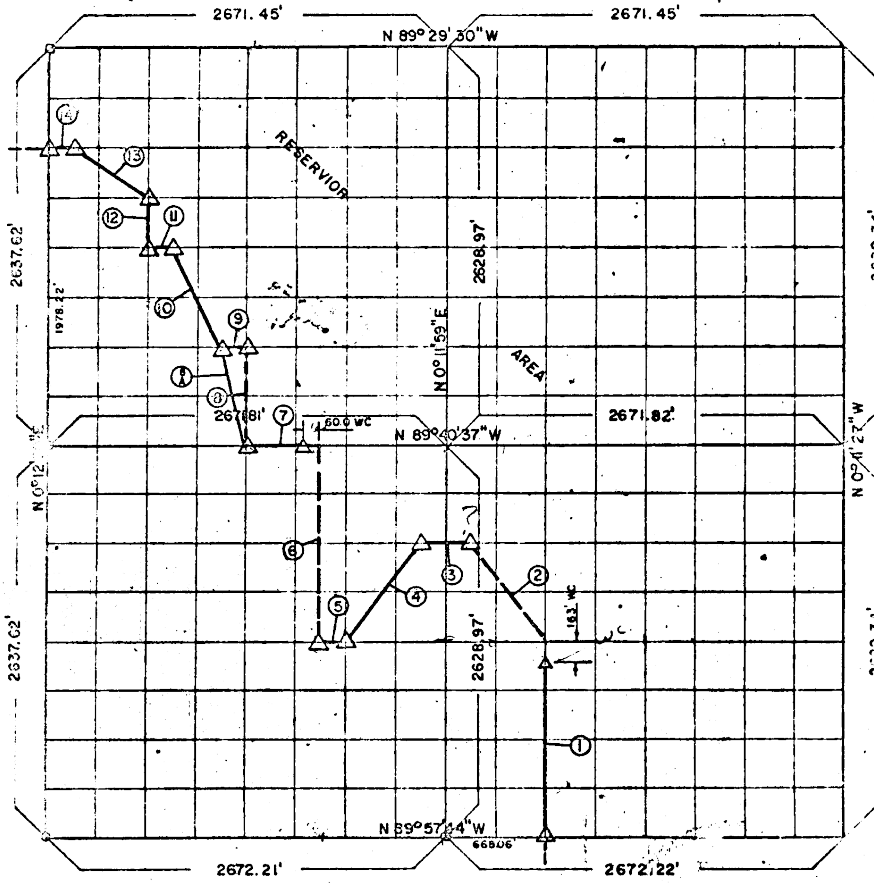


PARTIAL SURVEYS
EUFAL REZERVOIR

Performed Under Contract Number DACW56-70-C-0103

SEC. 10 T-8-N R-16-E COUNTY PITTSBURG



Course No	Distance	Bearing	Course No	Distance	Bearing
1	1313.41'	N 00°11'51"E	14	166.97'	N 09°27'13"W
2	826.53'	N 37°06'45"W	8A	668.16'	N 09°27'13"W
3	333.93'	N 63°43'04"W		8781.07	
4	826.32'	S 37°31'25"W			
5	167.00'	N 89°46'10"W			
6	1315.84'	N 00°12'09"E			
7	500.97'	N 89°40'37"W			
8	658.32'	N 00°12'14"E			
9	166.99'	N 89°37'51"W			
10	739.40'	N 26°36'12"W			
11	166.98'	N 89°35'02"W			
12	329.43'	N 00°12'22"E			
13	600.76'	N 56°17'02"W			

CERTIFICATE OF SURVEY
I HEREBY CERTIFY THAT THE
FIELD BOOKS, PLANS AND
COMPUTATIONS REPRESENTING THE
SURVEY MADE IN SECTION
10, T-8-N, R-16-E, PITTSBURG
COUNTY, OKLAHOMA

Fuller Associates
PROFESSIONAL ENGINEER
AND
LAND SURVEYOR

Field Book No. E-1121 Date 8 OCT 1970

FULLER ASSOCIATES
Consulting Professional Engineers

Under the Supervision of
U.S. ARMY ENGINEER DISTRICT, TULSA
CORPS OF ENGINEERS

SHEET 1 of 1

LEGEND
A MONUMENT
O ORIGINAL CENTER
O IRON PIN