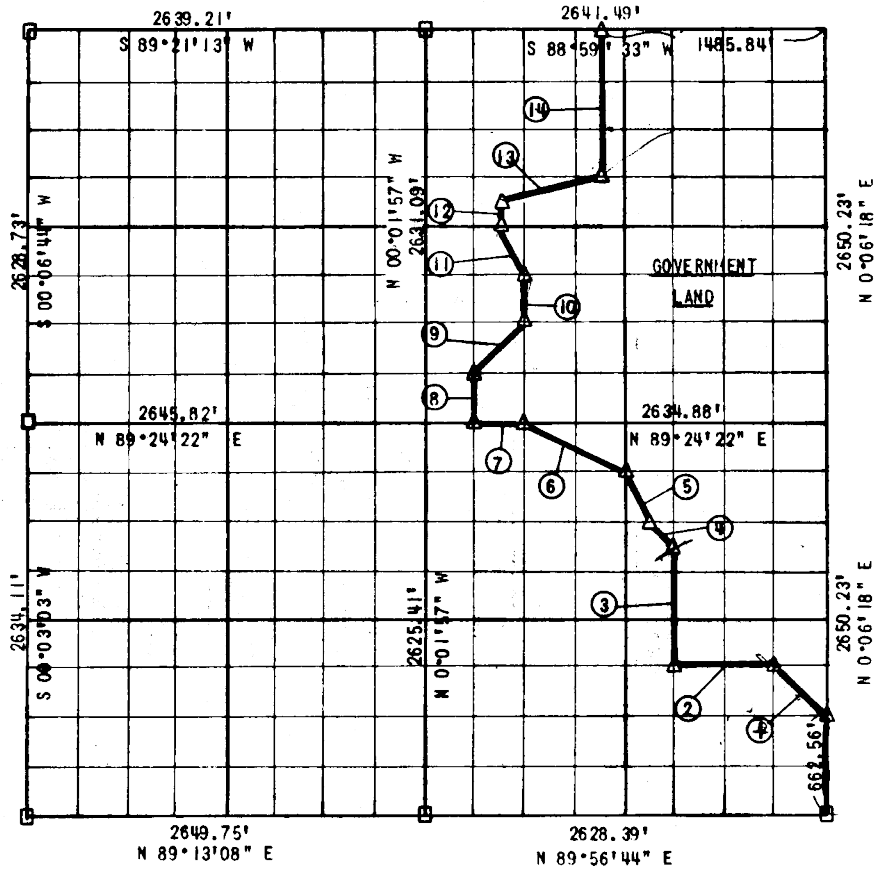


Performed Under  
DACW 56-77-6-L

Tract No.

PARTIAL SURVEY  
EUFALA LAKE  
SECTION 12, T 8 N, R 16 E

PITTSBURG COUNTY



Course No.	Distance	Bearing	Course No.	Distance	Bearing
1	465.31'	N 44°51'50" W	13	682.34'	N 75°11'03" E
2	657.70'	S 89°44'35" W	14	989.80'	N 00°01'41" E
3	825.29'	N 00°03'14" E			
4	232.04'	N 45°07'06" W			
5	367.24'	N 26°35'13" W			
6	733.38'	N 63°52'40" W			
7	329.03'	S 89°24'22" W			
8	328.22'	N 00°00'55" W			
9	468.57'	N 44°40'35" E			
10	329.48'	N 00°00'08" E			
11	366.37'	N 26°44'33" W			
12	164.67'	N 00°00'24" W			

CERTIFICATE OF SURVEY

Field Book No. E-1384

Date: March 15, 1978

I hereby certify that the above plat is a true and correct representation of the survey made in Section 12, T 8 N, R 16 E, Pittsburg County, Oklahoma.

SULLIVAN & GILBERT, INC.  
Consulting Engineers  
Under the supervision of  
U. S. ARMY ENGINEER DISTRICT, TULSA  
CORPS OF ENGINEERS

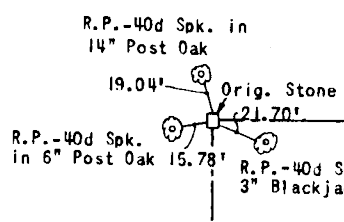
LEGEND

- △ C OF E MON.
- IRON PIN
- ORIG. STONE

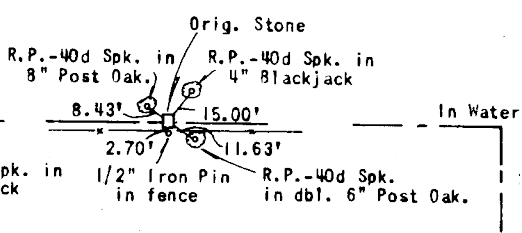
*[Signature]*  
REGISTERED LAND SURVEYOR L. S. #122

EUI LAKE  
SECTION AND QUARTER SECTION  
CORNER REFERENCES FOR  
SECTION 12, T 8 N, R 16 E, PITTSBURG COUNTY

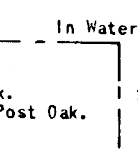
N.W. SECTION CORNER



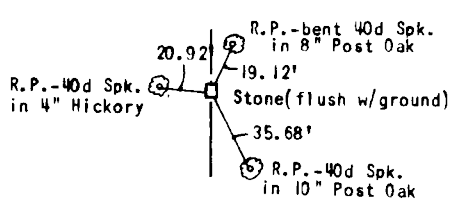
NORTH ½ CORNER



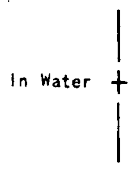
N.E. SECTION CORNER



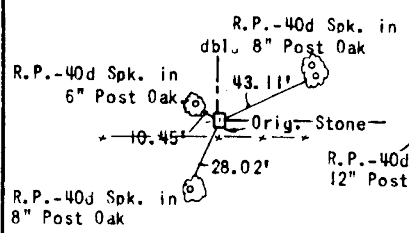
WEST ½ CORNER



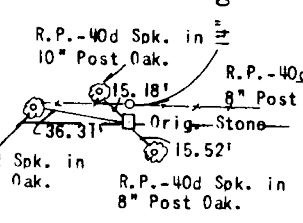
EAST ½ CORNER



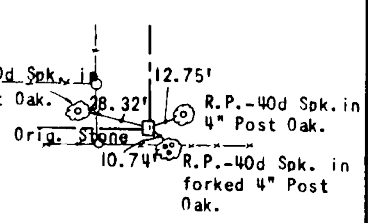
S.W. SECTION CORNER



SOUTH ½ CORNER



S.E. SECTION CORNER



Scale: 1"=50'  
Field Book No. E-1384  
Sullivan and Gilbert, Inc.  
Date: March 15, 1978