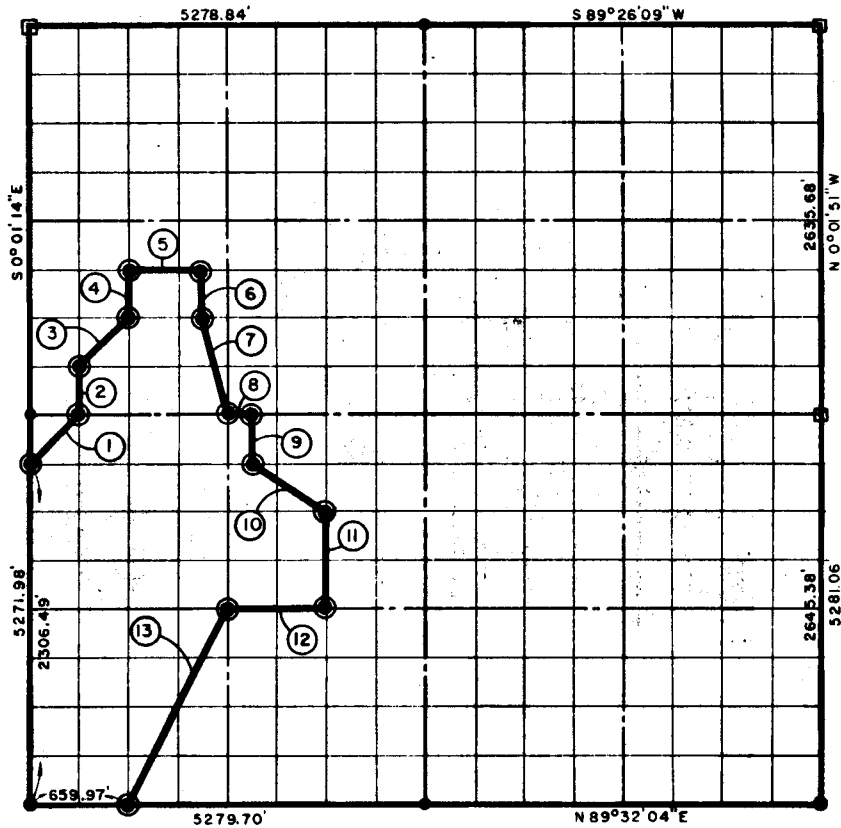


ON 13, T 8 N, R 16 E WITSBURG COUNTY.

- ⊙ BRASS CAP IN CONCRETE
- ORIGINAL STONE
- IRON PIN



| COURSE NO. | DISTANCE | BEARING | COURSE NO. | DISTANCE | BEARING |
|------------|----------|---------------|------------|----------|---------------|
| ① | 468.53' | N 44°44'45\"E | ⑧ | 164.98' | N 89°25'57\"E |
| ② | 329.50' | N 0°01'16\"W | ⑨ | 329.83' | S 0°01'24\"E |
| ③ | 468.51' | N 44°44'43\"E | ⑩ | 592.29' | S 56°42'13\"E |
| ④ | 329.49' | N 0°01'19\"W | ⑪ | 659.88' | S 0°01'28\"E |
| ⑤ | 494.92' | N 89°26'01\"E | ⑫ | 659.94' | S 89°29'01\"W |
| ⑥ | 329.49' | S 0°01'22\"E | ⑬ | 1479.60' | S 26°27'58\"W |
| ⑦ | 677.79' | S 14°06'36\"E | | 6989.75 | |
| | | | | | |
| | | | | | |

BOOK No.

4114

I, John Carney, a Registered Professional Engineer, do hereby certify that the above plat is a true and accurate survey of Sec. 13, T 8 N, R. 16 E as made under my supervision.

John Carney
 JOHN CARNEY
 Reg. Prof. Engr. No. 137