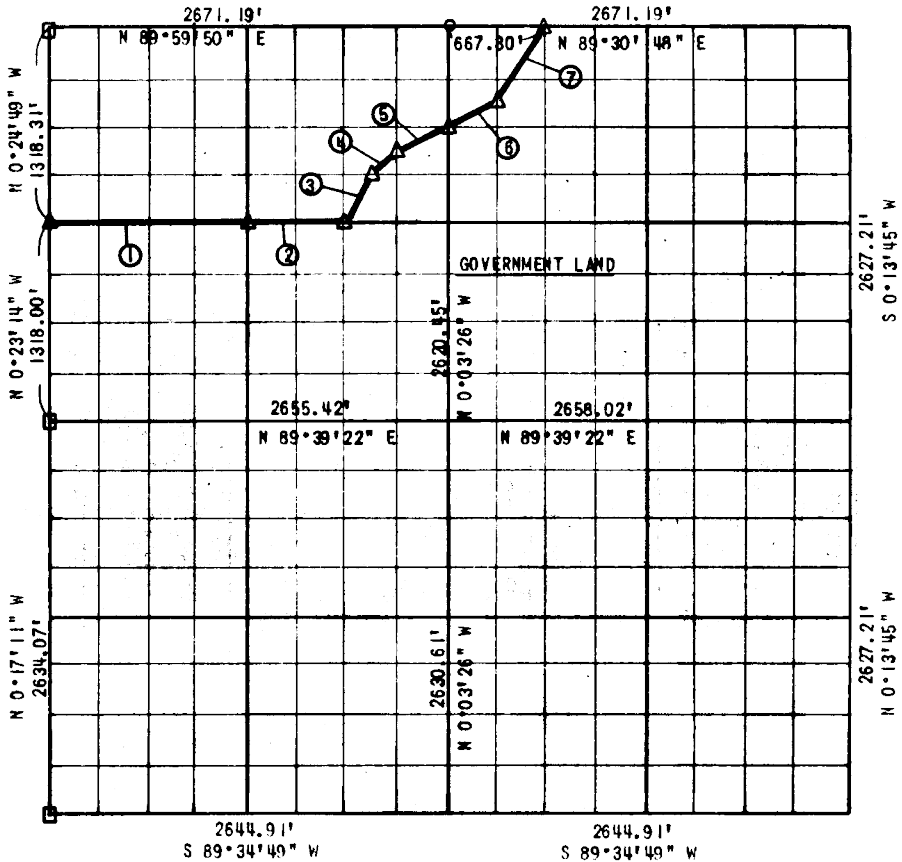


Performed Under Contract No.
DACW 56-77-C-0255

PARTIAL BOUNDARY SURVEY
EUFA LAKE
SECTION 15, T 8 N, R 16 E
PITTSBURG COUNTY



Course No.	Distance	Bearing	Course No.	Distance	Bearing
1	1331.67'	N 89°49'26" E			
2	665.51'	N 89°49'26" E			
3	367.86'	N 26°45'58" E			
4	233.73'	N 45°20'24" E			
5	371.17'	N 63°42'19" E			
6	372.85'	N 63°29'02" E			
7	596.30'	N 34°00'18" E			

CERTIFICATE OF SURVEY Field Book No. E-1385 Date: March 15, 1978

I hereby certify that the above plat is a true and correct representation of the survey made in Section 15, T 8 N, R 16 E, Pittsburg County, Oklahoma.

SULLIVAN & GILBERT, INC.
Consulting Engineers
Under the supervision of
U.S. ARMY ENGINEER DISTRICT, TULSA
CORPS OF ENGINEERS

- LEGEND
- △ C OF E MON.
 - IRON PIN
 - ORIG. STONE

[Signature]
REGISTERED LAND SURVEYOR L.S. #122

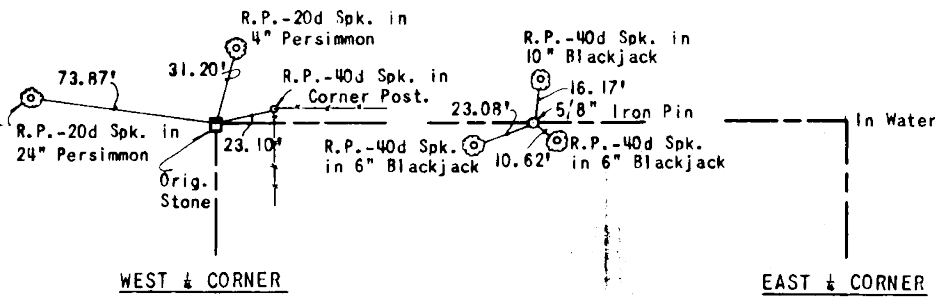
EUFAULA LAKE

SECTION AND QUARTER SECTION
 CORNER REFERENCES FOR
SECTION 15, T 8 N, R 16 E, PITTSBURG COUNTY

N.W. SECTION CORNER

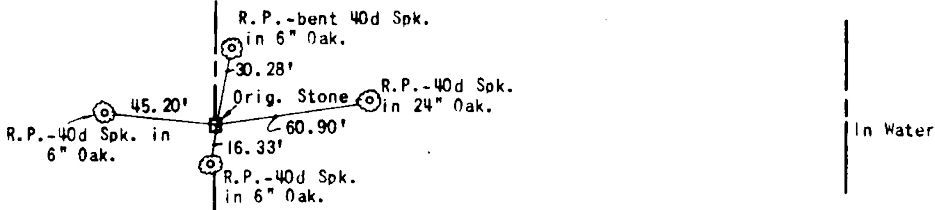
NORTH ½ CORNER

N.E. SECTION CORNER



WEST ½ CORNER

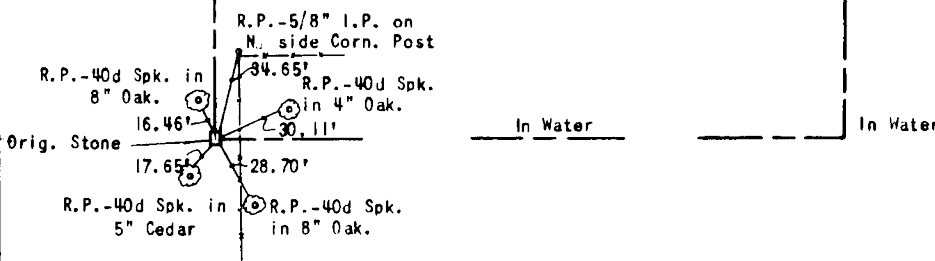
EAST ½ CORNER



S.W. SECTION CORNER

SOUTH ½ CORNER

S.E. SECTION CORNER



Scale: 1"=50'
 Field Book No. E-1386
 Sullivan and Gilbert, Inc.
 Date: March 15, 1978