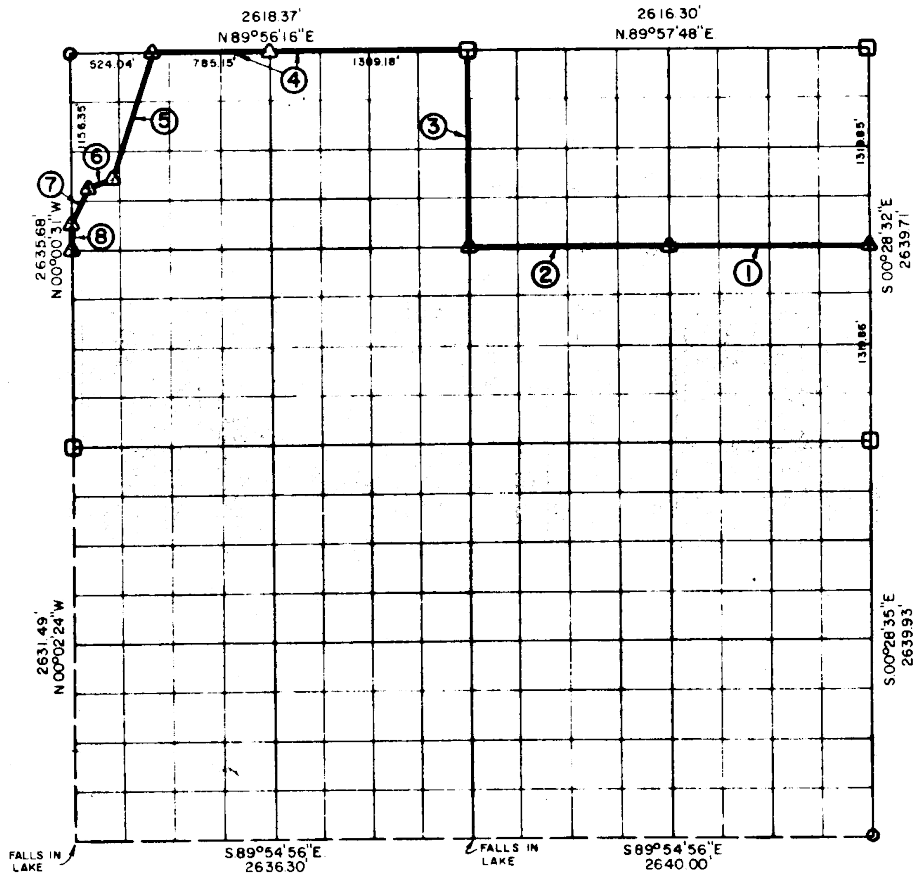


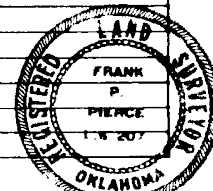
**PARTIAL BOUNDARY SURVEYS  
EUFAULA LAKE  
OKLAHOMA**

Performed Under Contract Number DACW 56-75-C-0126

SEC. 17, T. 8 N., R. 16 E., COUNTY PITTSBURG



Course No.	Distance	Bearing	Course No.	Distance	Bearing
1	1311.11'	S.89°58'43\" W.			
2	1311.11'	S.89°58'43\" W.			
3	1319.12'	N.00°13'08\" W.			
4	2094.33'	S.89°56'16\" W.			
5	891.63'	S.16°40'09\" W.			
6	162.79'	S.68°58'43\" W.			
7	270.56'	S.25°25'25\" W.			
8	161.49'	S.00°00'31\" E.			



Field Book No. E-1201 Date 7-11-75

CERTIFICATE OF SURVEY  
I hereby Certify That The  
Above Plot is a True and  
Correct Representation of  
The Survey Made in Section  
17, T. 8 N., R. 16 E., PITTSBURG  
COUNTY, OKLAHOMA  
*Frank P. Pierce*  
Registered Professional Engineer  
Registered Land Surveyor

MAPCO ENGINEERING CORPORATION  
Under The Supervision Of  
U.S. ARMY ENGINEER DISTRICT, TULSA  
CORPS OF ENGINEERS  
SHEET 1 of 2

LEGEND  
▲ MONUMENT  
□ ORIGINAL CORNER  
○ IRON PIN

