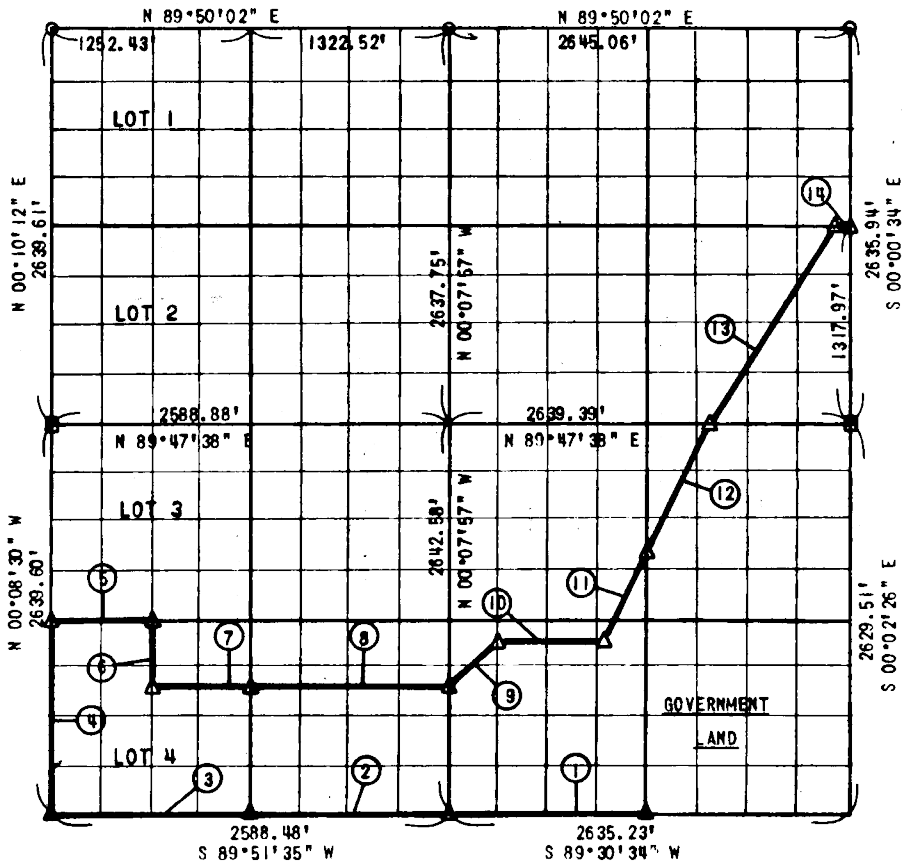


PARTIAL BOUNDARY SURVEY
 Performed Under Contract No. EU, LAKE
 DACW 56-77-C-0255 SECTION 18, T 8 N, R 16 E PITTSBURG COUNTY



Course No.	Distance	Bearing	Course No.	Distance	Bearing
1	1316.88'	S 89°30'34" W	13	1562.97'	N 31°58'36" E
2	1317.64'	S 89°51'35" W	14	100.89'	N 89°48'50" E
3	1270.84'	S 89°51'35" W			
4	1319.80'	N 00°08'30" W			
5	610.41'	N 89°49'37" E			
6	495.06'	S 00°12'44" E			
7	659.19'	N 89°50'21" E			
8	1318.30'	N 89°50'21" E			
9	467.52'	N 44°40'55" E			
10	673.47'	N 89°38'02" E			
11	732.08'	N 25°25'25" E			
12	908.12'	N 25°25'25" E			

CERTIFICATE OF SURVEY

Field Book No. E-1365

Date: March 15, 197

I hereby certify that the above plat is a true and correct representation of the survey made in Section 18, T 8 N, R 16 E, Pittsburg County, Oklahoma.

SULLIVAN & GILBERT, INC.
 Consulting Engineers

Under the supervision of
 U.S. ARMY ENGINEER DISTRICT, TULSA
 CORPS OF ENGINEERS

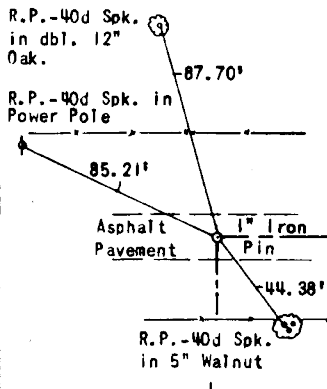
LEGEND

- △ C OF F
- IRON P
- ORIG.

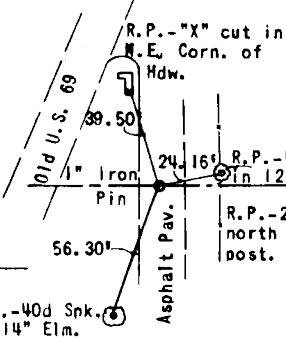
[Signature]
 REGISTERED LAND SURVEYOR L.S. #122

EUFAULA LAKE
SECTION AND QUARTER SECTION
CORNER REFERENCES FOR
SECTION 18, T 8 N, R 16 E, PITTSBURG COUNTY

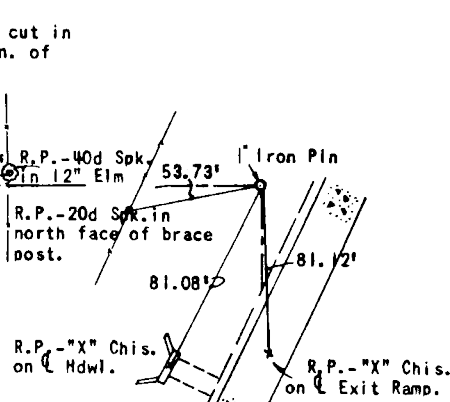
N.W. SECTION CORNER



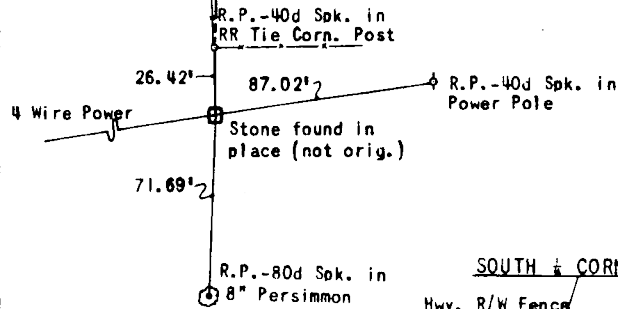
NORTH 1/2 CORNER



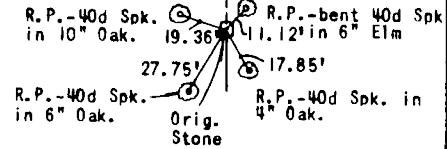
N.E. SECTION CORNER



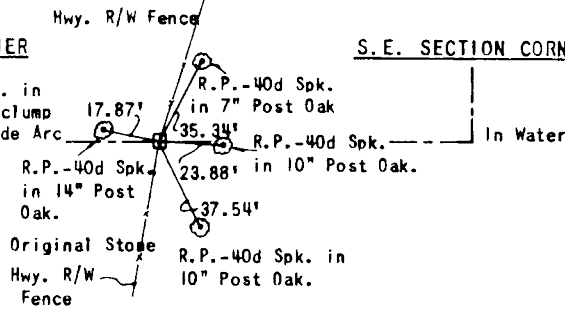
WEST 1/2 CORNER



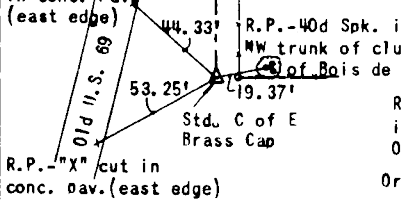
EAST 1/2 CORNER



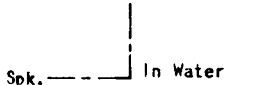
SOUTH 1/2 CORNER



S.W. SECTION CORNER



S.E. SECTION CORNER



Scale: 1"=50'
Field Book No. E-1385
Sullivan and Gilbert, Inc.
Date: March 15, 1978