

PARTIAL E / O / Y SURVEYS

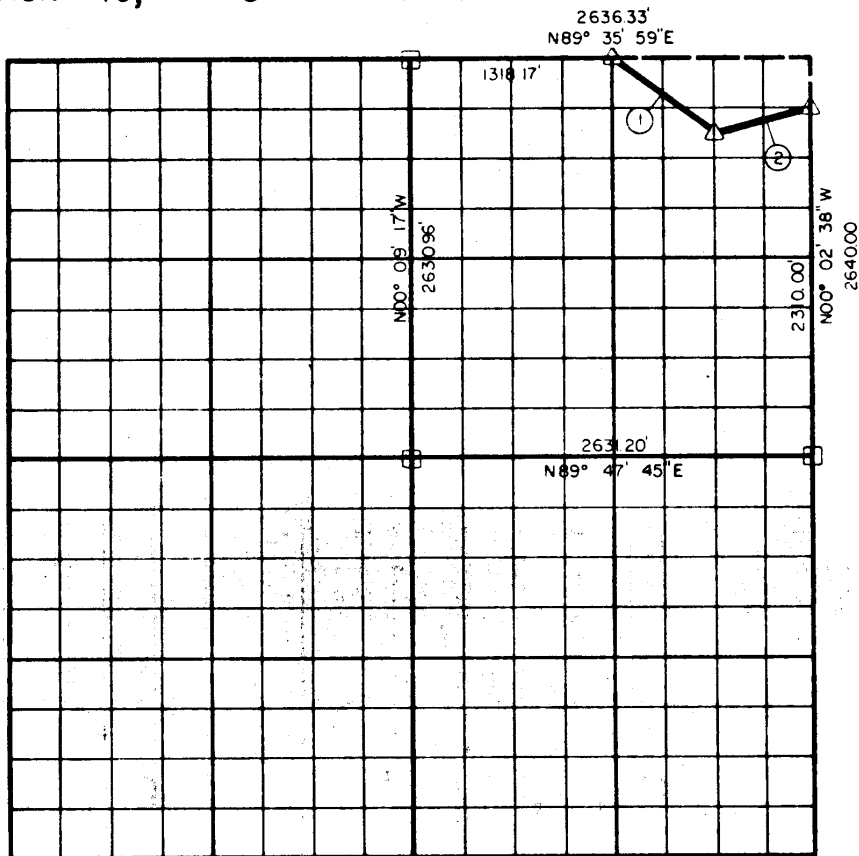
- A. 'D'

EUFAULA RESERVOIR

CANADIAN RIVER, OKLAHOMA

Performed Under Contract Number DACW 56-70-C-0085

SECTION 19, T-8-N R-16-E PITTSBURG COUNTY



Course No.	Distance	Bearing	Course No.	Distance	Bearing
①	821.74'	S 53° 23' 51" E			
②	660.08	N 75° 35' 44" E			

Book No. E-1097 Date: November, 1970

- △ Monument
- Original Corner
- Iron Pin

426

I, Lee D. Johnson, a Registered Land Surveyor, do hereby certify that the above plat is a true and accurate survey of Section 19, T-8-N, R-16-E as made under my supervision.

Lee D. Johnson
LEE D. JOHNSON
Reg. Land Surveyor L.S. 738