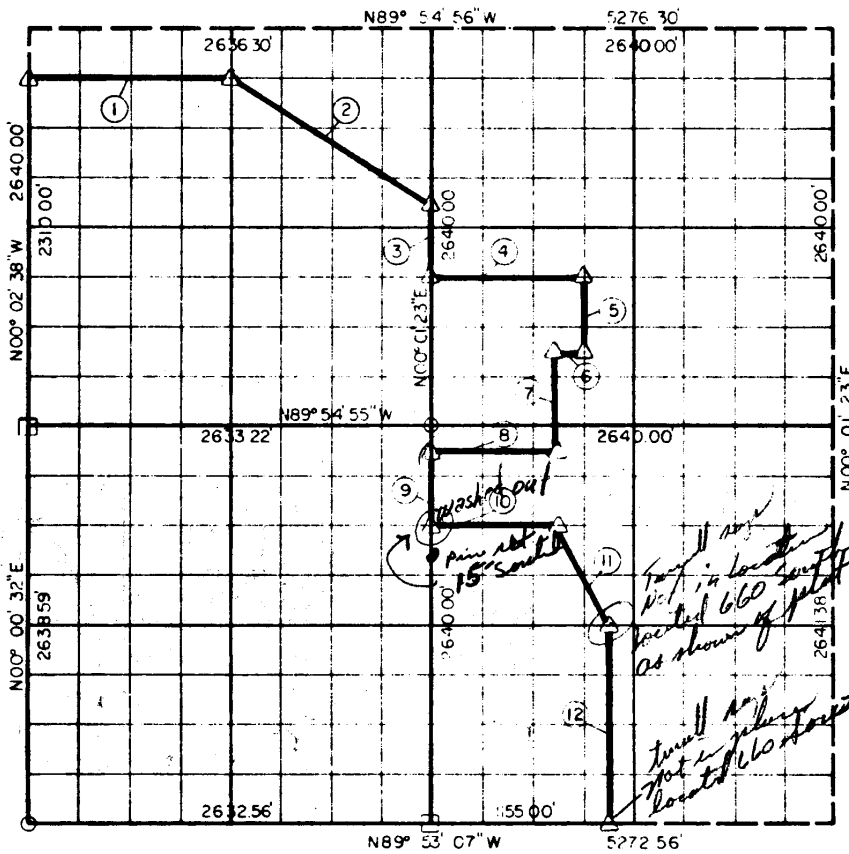


PARTIAL BOUNDARY SURVEYS  
 A - D"  
 EUFAULA RESERVOIR  
 CANADIAN RIVER, OKLAHOMA

Performed Under Contract Number DACW 56-70-C-0085

SECTION 20, T-8-N, R-16-E PITTSBURG COUNTY



Course No.	Distance	Bearing	Course No.	Distance	Bearing
①	1317.96'	S89° 54' 56" E	⑩	625.00'	S89° 54' 28" E
②	1555.62'	S57° 53' 15" E	⑪	738.39'	S26° 31' 22" E
③	495.00'	S00° 01' 23" W	⑫	1320.30'	S00° 01' 23" W
④	990.00'	S89° 54' 55" E			
⑤	495.00'	S00° 01' 23" W			
⑥	165.00'	N89° 54' 55" W			
⑦	660.03'	S00° 01' 23" W			
⑧	825.00'	N89° 54' 48" W			
⑨	495.00'	S00° 01' 23" W			

Book No. E-1098 Date: November, 1970

- △ Monument
- Original Corner
- Iron Pin

427

I, Lee D. Johnson, a Registered Land Surveyor, do hereby certify that the above plat is a true and accurate survey of Section 20, T-8-N, R-16-E as made under my supervision.

*Lee D. Johnson*  
 LEE D. JOHNSON  
 Reg. Land Surveyor L.S. 738