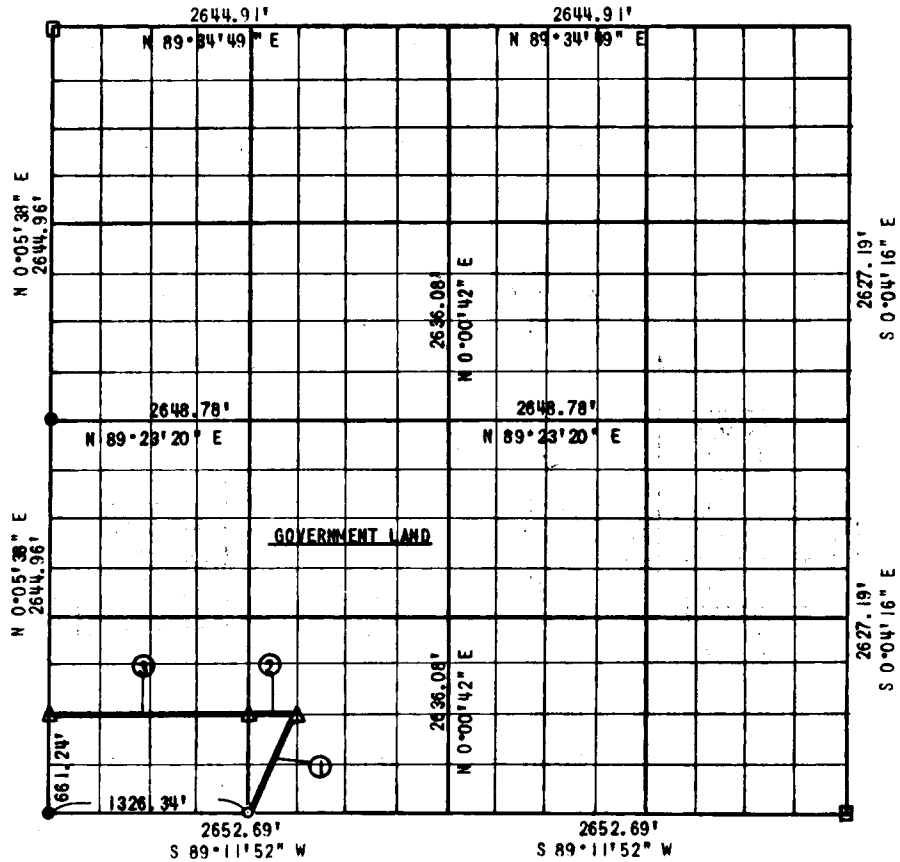


PARTIA' BOUNDARY SURVEY
 EbraULA LAKE
 SECTION 22, T 8 N, R 16 E PITTSBURG COUNTY
 Performed Under Contract No.
 DACW 56-77-C-0255



Course No.	Distance	Bearing	Course No.	Distance	Bearing
1	742.79'	N 26°33'03\" E			
2	331.46'	S 89°14'44\" W			
3	1325.85'	S 89°14'44\" W			

CERTIFICATE OF SURVEY Field Book No. E-1387 Date: March 15, 1978

I hereby certify that the above plat is
 a true and correct representation of the
 survey made in Section 22, T 8 N, R 16 E,
 Pittsburg County, Oklahoma.

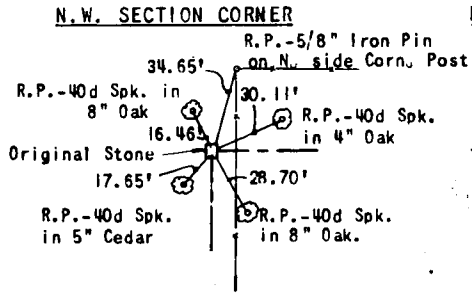
SULLIVAN & GILBERT, INC.
 Consulting Engineers
 Under the supervision of
 U.S. ARMY ENGINEER DISTRICT, TULSA
 CORPS OF ENGINEERS

LEGEND
 Δ C OF E 'MON.
 ○ IRON PIN
 □ ORIG. STONE

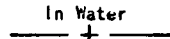

 REGISTERED LAND SURVEYOR L.S. #122

EUFAULA LAKE

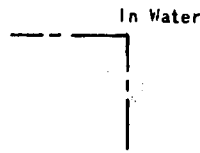
SECTION AND QUARTER SECTION
 CORNER REFERENCES FOR
SECTION 22, T 8 N, R 16 E, PITTSBURG COUNTY



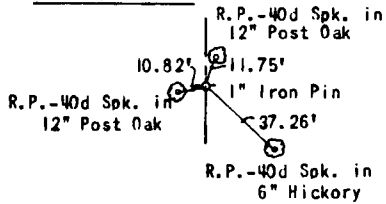
NORTH 1/4 CORNER



N.E. SECTION CORNER



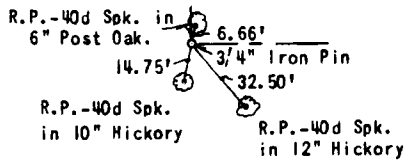
WEST 1/4 CORNER



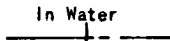
EAST 1/4 CORNER



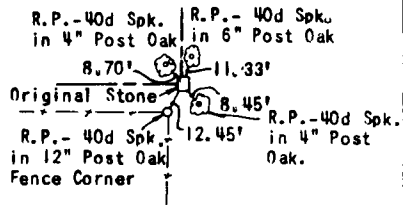
S.W. SECTION CORNER



SOUTH 1/4 CORNER



S.W. SECTION CORNER



Scale: 1"=50'
 Field Book No. E-1387
 Sullivan and Gilbert, Inc.
 Date: March 15, 1978