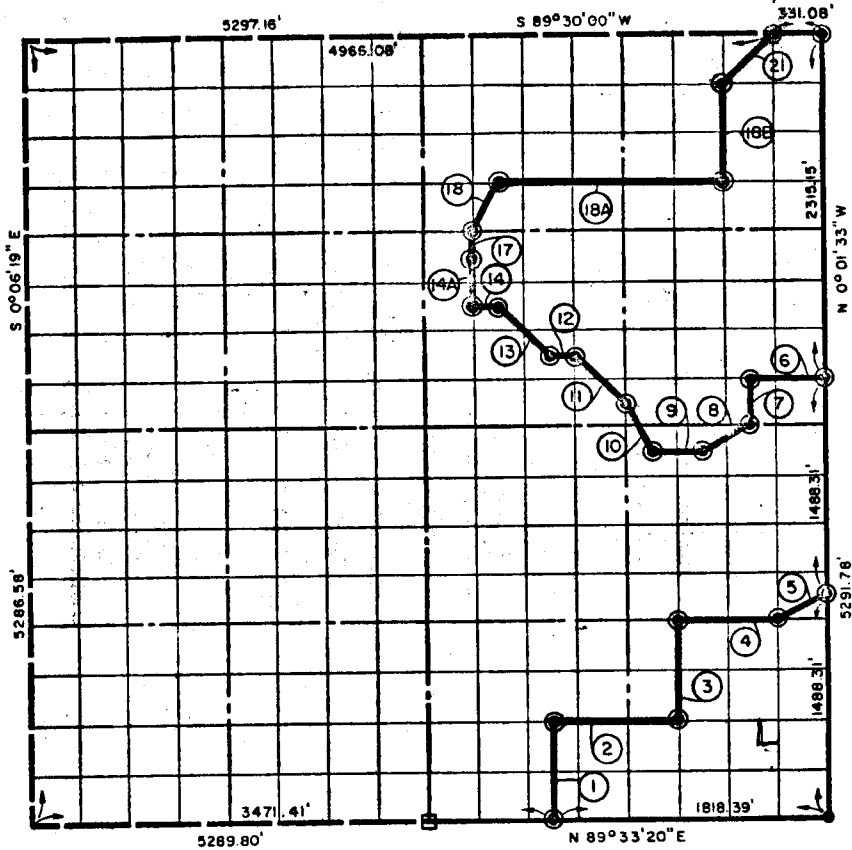


SECTION 23, T 8 N, R 16 E PITTSBURG CO

- ⊙ P CAP IN CONCRETE
- C AL STONE
- IRON PIN



COURSE NO.	DISTANCE	BEARING	COURSE NO.	DISTANCE	BEARING
①	661.25'	N 0°03'11" W	⑫	165.44'	S 89°31'22" W
②	826.67'	N 89°32'55" E	⑬	466.03'	N 45°17'32" W
③	661.35'	N 0°02'26" W	⑭	165.46'	S 89°31'09" W
④	661.46'	N 89°32'30" E	⑭A	330.60'	N 0°03'38" W
⑤	370.88'	N 63°03'47" E	⑰	165.30'	N 0°03'38" W
⑥	496.31'	S 89°31'28" W	⑱	370.83'	N 26°26'48" E
⑦	330.71'	S 0°02'00" E	⑱A	1489.27'	N 89°30'38" E
⑧	370.98'	S 63°03'40" W	⑱B	661.40'	N 0°02'08" W
⑨	330.83'	S 89°31'47" W	⑳	469.98'	N 44°46'57" E
⑩	368.62'	N 26°42'26" W	○		
⑪	466.01'	N 45°16'54" W			

Field Book No. E-1073

Date None Given

430

Revised By CofE
March 1974

I, John Carney, a Registered Professional Engineer, do hereby certify that the above plat is a true and accurate survey of Sec. 23, T 8 N, R 16 E. as made under my supervision

John Carney