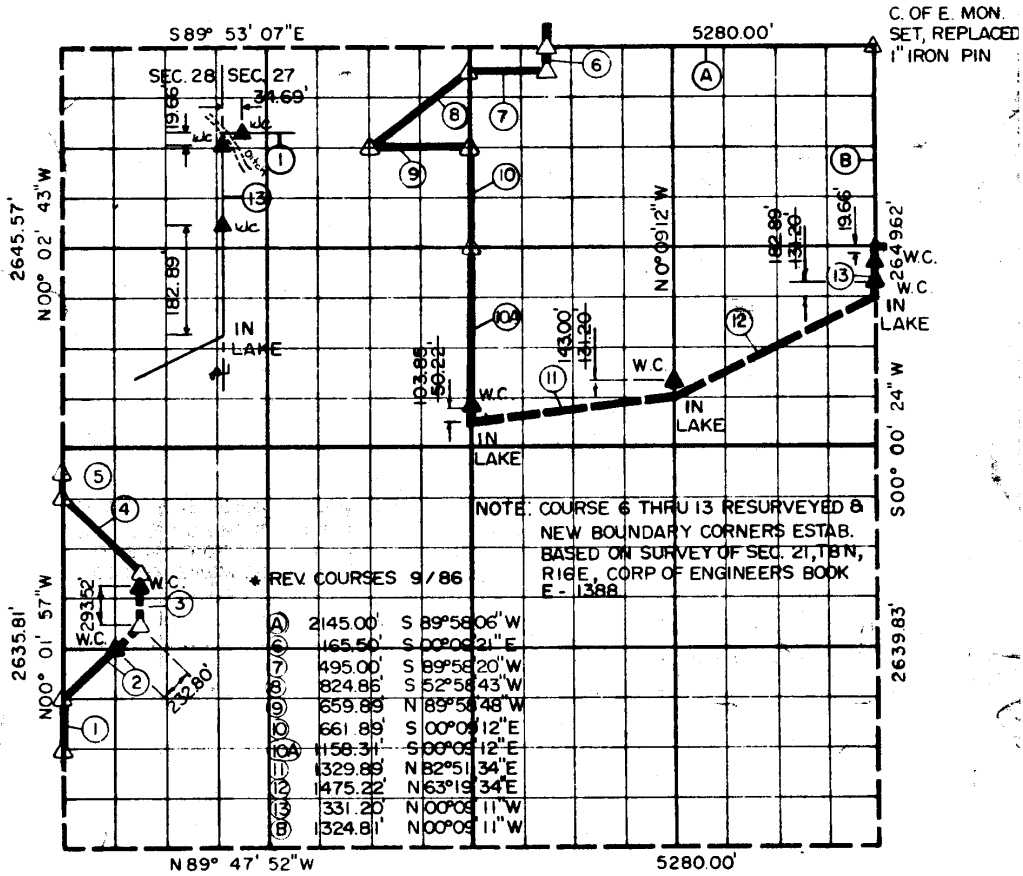


PARTIAL BOU RY SURVEYS  
 AREA "D"  
 EUFAULA RESERVOIR  
 CANADIAN RIVER, OKLAHOMA

Performed Under Contract Number DACW 56-70-C-0085

SECTION 28, T-8-N R-16-E PITTSBURG COUNTY



Course No.	Distance	Bearing	Course No.	Distance	Bearing
①	329.48'	N 00° 01' 57" W	⑩	661.90'	S 00° 00' 24" W
②	698.33'	N 45° 07' 45" E	⑩A	1158.32'	S 00° 00' 24" W
③	329.52'	N 00° 01' 30" W	⑪	1329.91'	N 83° 00' 20" E
④	700.89'	N 44° 59' 18" W	⑫	1475.37'	N 63° 28' 31" E
⑤	164.74'	N 00° 01' 57" W	⑬	331.26'	N 00° 00' 24" E
⑥	165.50'	S 00° 00' 24" W			
⑦	495.00'	N 89° 52' 57" W			
⑧	825.12'	S 53° 08' 18" W			
⑨	660.11'	S 89° 52' 27" E			

Book No. E-1101

Date: November, 1970

\* Rev. Sept., 1986

- △ Monument
- Original Corner
- Iron Pin
- ▲ W.C.

I, Lee D. Johnson, a Registered Land Surveyor, do hereby certify that the above plat is a true and accurate survey of Section 28, T-8-N, R-16-E as made under my supervision.

442  
*Lee D. Johnson*  
**LEE D. JOHNSON**  
 Reg. Land Surveyor L.S. 738