

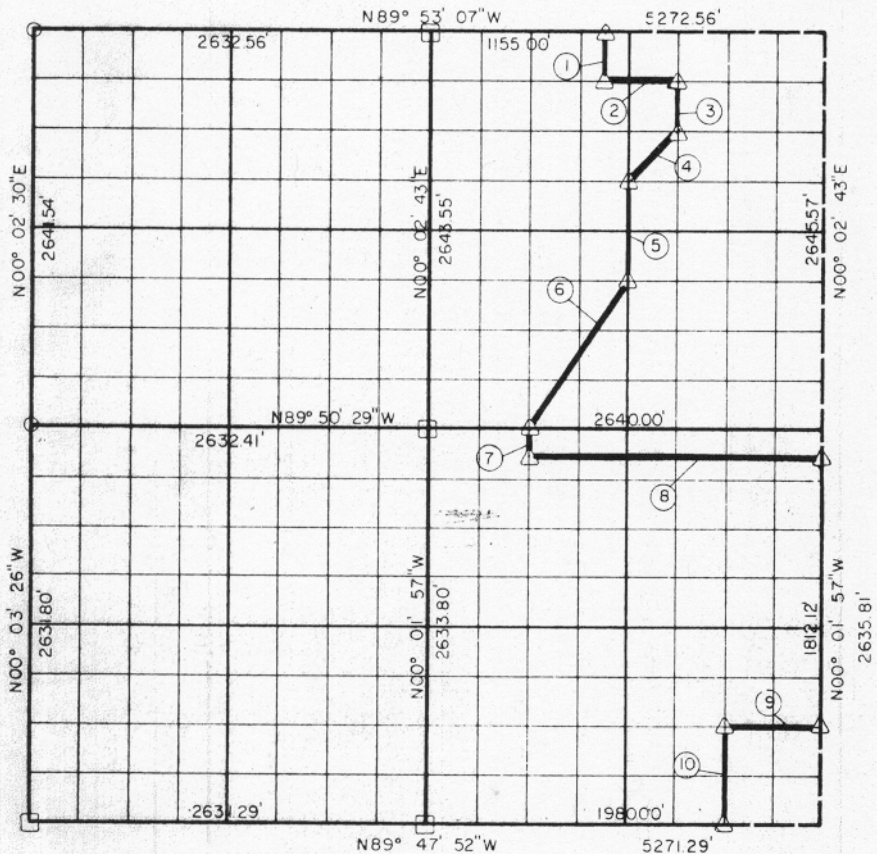
PARTIAL BOOK SURVEYS

AND

EUFAULA RESERVOIR
CANADIAN RIVER, OKLAHOMA

Performed Under Contract Number DACW 56-70-C-0085

SECTION 29, T-8-N R-16-E PITTSBURG COUNTY



Course No.	Distance	Bearing	Course No.	Distance	Bearing
①	330.55'	S 00° 02' 43" W	⑩	658.83'	S 00° 01' 57" E
②	495.00'	S 89° 52' 47" E			
③	330.60'	S 00° 02' 43" W			
④	466.68'	S 45° 02' 11" W			
⑤	661.14'	S 00° 02' 43" W			
⑥	1190.17'	S 33° 43' 28" W			
⑦	164.64'	S 00° 01' 57" E			
⑧	1980.00'	S 89° 50' 19" E			
⑨	660.00'	N 89° 48' 32" W			

Book No. E-1102

Date: November, 1970

△ Monument

□ Original Corner

○ Iron Pin

I, Lee D. Johnson, a Registered Land Surveyor, do hereby certify that the above plat is a true and accurate survey of Section 29, T-8-N, R-16-E as made under my supervision.

441
Lee D. Johnson
LEE D. JOHNSON
Reg. Land Surveyor L.S. 738