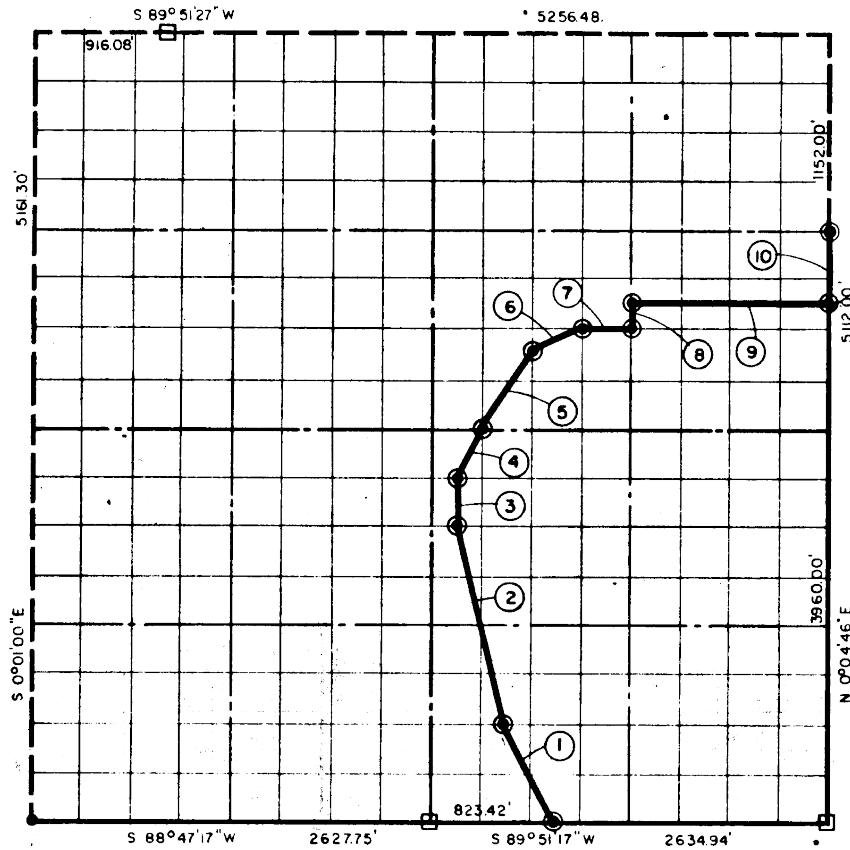


SECTION 2, T.8 N., R.16 E. WATTSBURG COUNTY

- IRON PIN CONCRETE
- L. STONE
- IRON PIN



COURSE NO.	DISTANCE	BEARING	COURSE NO.	DISTANCE	BEARING
①	733.00'	N 26°43'43\"W	⑩	495.00'	N 0°04'46\"W
②	1349.01'	N 14°08'21\"W		6048.78	
③	3274.1'	N 0°00'36\"W			
④	3679.7'	N 26°32'19\"E			
⑤	597.38'	N 33°22'48\"E			
⑥	369.49'	N 62°50'39\"E			
⑦	328.85'	N 89°23'14\"E			
⑧	165.07'	N 0°02'31\"W			
⑨	1315.30'	N 89°23'25\"E			

BOOK No. 962

370

I, John Carney, a Registered Professional Engineer, do hereby certify that the above plat is a true and accurate survey of Sec. 2, T.8 N., R.16 E. as made under my supervision.

3,553.00

John Carney
 JOHN CARNEY
 Reg. Prof. Engr. No. 137