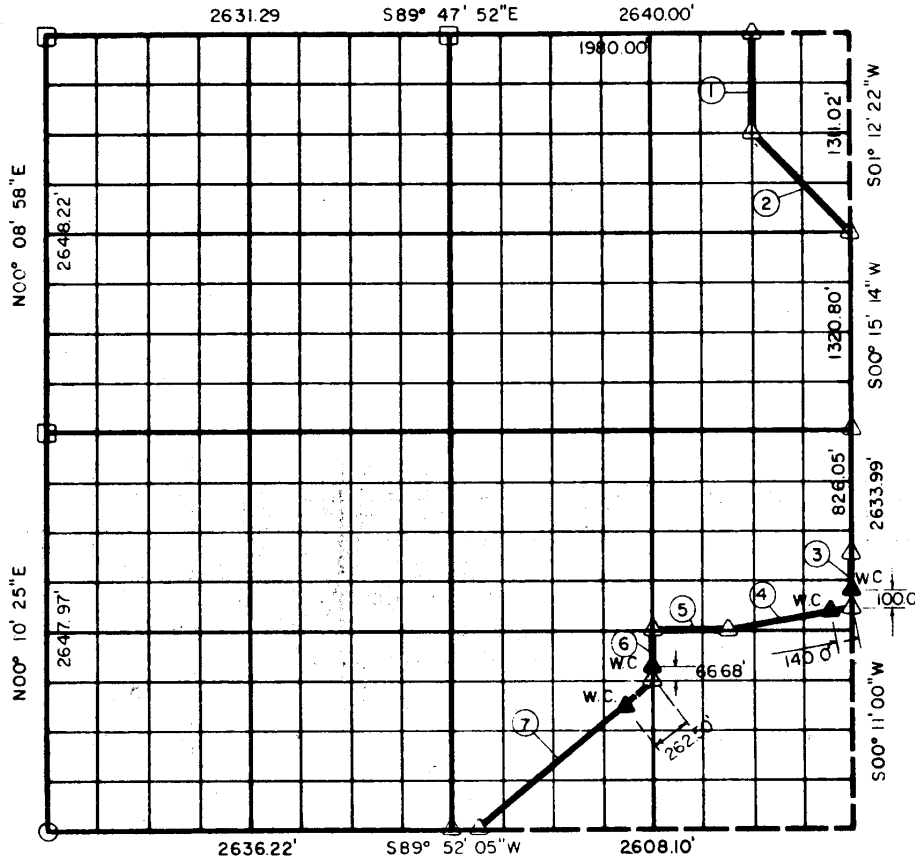


PARTIAL BOUNDARY SURVEYS  
A. D.  
EUFAULA RESERVOIR  
CANADIAN RIVER, OKLAHOMA



Performed Under Contract Number DACW 56-70-C-0085

SECTION 32, T-8-N R-16-E PITTSBURG COUNTY



| Course No. | Distance | Bearing        | Course No. | Distance | Bearing |
|------------|----------|----------------|------------|----------|---------|
| ①          | 656.00'  | S00° 55' 54\"W |            |          |         |
| ②          | 919.46'  | S44° 22' 37\"E |            |          |         |
| ③          | 326.32'  | S00° 11' 00\"W |            |          |         |
| ④          | 832.69'  | S78° 32' 31\"W |            |          |         |
| ⑤          | 489.34'  | S89° 56' 40\"W |            |          |         |
| ⑥          | 329.68'  | S00° 08' 45\"W |            |          |         |
| ⑦          | 1513.65' | S49° 04' 08\"W |            |          |         |

Book No. E-1103

Date: November, 1970

- △ Monument
- Original Corner
- Iron Pin

450

I, Lee D. Johnson, a Registered Land Surveyor, do hereby certify that the above plat is a true and accurate survey of Section 32, T-8-N, R-16-E as made under my supervision.

*Lee D. Johnson*  
**LEE D. JOHNSON**  
Reg. Land Surveyor L.S. 738