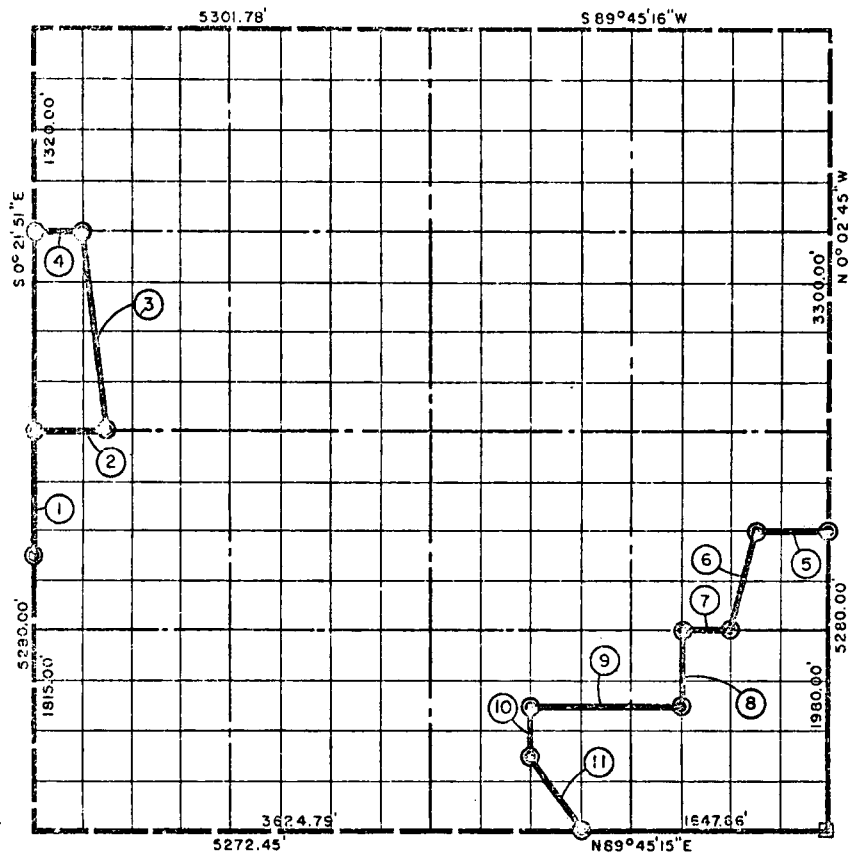


ORIGINAL STONE
 IRON PIN



COURSE NO.	DISTANCE	BEARING	COURSE NO.	DISTANCE	BEARING
①	825.00'	N 0°21'51" W	⑧	495.00'	S 0°06'20" E
②	495.66'	N 89°45'16" E	⑨	989.44'	S 89°45'15" W
③	1330.58'	N 7°28'38" W	⑩	330.00'	S 0°09'54" E
④	330.90'	S 89°45'16" W	⑪	594.26'	S 33°50'22" E
⑤	495.32'	S 89°45'15" W			
⑥	680.78'	S 13°57'00" W			
⑦	329.98'	S 89°45'15" W			

SHOWN IN SECT. 39+40
 REL - DATE 1-4-78

33, 8N, 16E

I, John Carney, a Registered Professional Engineer, do hereby certify that the above plot is a true and accurate survey of Sec. 33, T 8 N, R 16 E as made under my supervision

John Carney