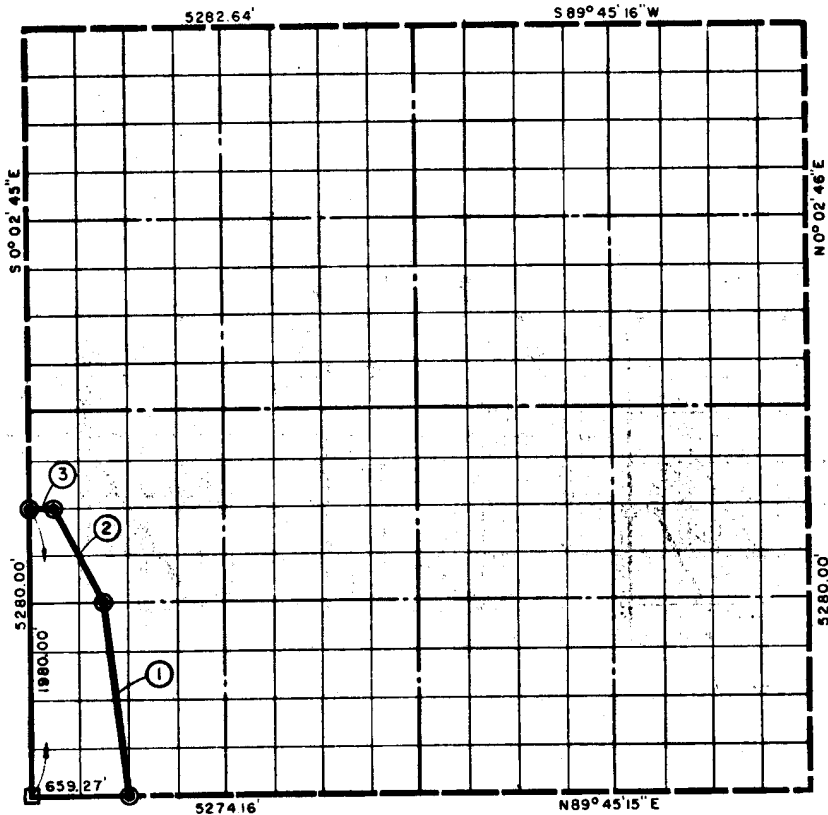


ON 34, T 8 N, R 16 E (TTSBURG COUNTY)



- ⊙ BRASS CAP IN CONCRETE
- ORIGINAL STONE
- IRON PIN



COURSE NO.	DISTANCE	BEARING	COURSE NO.	DISTANCE	BEARING
①	1329.65'	N 7° 09' 28" W			
②	736.75'	N 26° 37' 56" W			
③	164.92'	S 89° 45' 16" W			
	2,231.32				

1068 452

I, John Carney, a Registered Professional Engineer, do hereby certify that the above plat is a true and accurate survey of Sec. 34, T. 8 N., R. 16 E. as made under my supervision

John Carney
 JOHN CARNEY
 Reg. Prof. Engr. No. 137