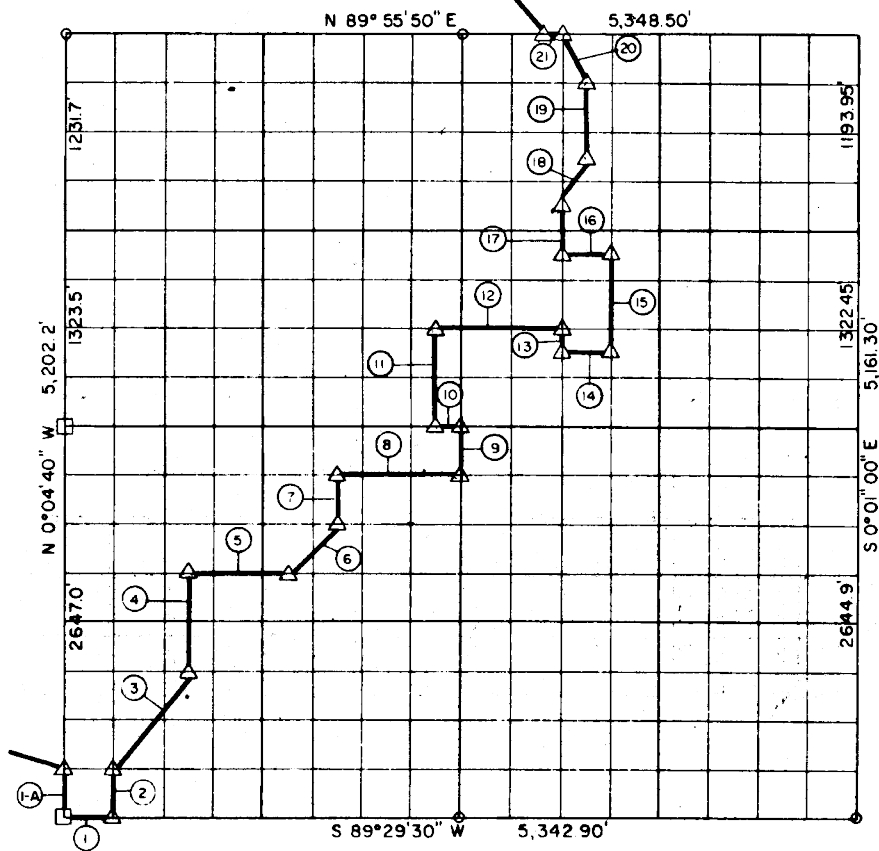


RE  
 3, T 8 N, R 16 E PITTSBURG COUNTY



Course No.	Distance	Bearing	Course No.	Distance	Bearing
1-A	330.87'	N 0°04'40" W	19	452.60'	N 0°02'16" W
1	333.93'	N 89°29'30" E	20	344.84'	N 29°01'27" W
2	330.86'	N 0°04'26" W	21	48.21'	S 89°55'50" W
3	832.94'	N 36°54'00" E			
4	661.67'	N 0°04'06" W			
5	668.08'	N 89°30'20" E			
6	471.89'	N 45°00'00" E			
7	330.79'	N 0°03'24" W			
8	835.20'	N 89°30'40" E			
9	330.74'	N 0°02'50" W			
10	166.97'	S 89°30'50" W			
11	661.50'	N 0°02'57" W			
12	835.38'	N 89°31'11" E			
13	165.36'	S 0°02'23" E			
14	334.14'	N 89°31'06" E			
15	661.39'	N 0°02'09" W			
16	334.18'	S 89°31'27" W			
17	316.37'	N 0°02'23" W			
18	345.89'	N 28°51'00" E			

Book No. E-923

Date: November, 1964

Redrawn, November, 1964 This plat  
 supersedes plat dated July, 1964

369 -

I, James E. Curry, a Registered Professional Engineer, do hereby certify that the above plat is a true and accurate survey of Sec. 3, T 8 N, R 16 E as made under my supervision.

97-3, 70

*James E. Curry*  
 JAMES E. CURRY  
 Reg. Prof Eng No 1872