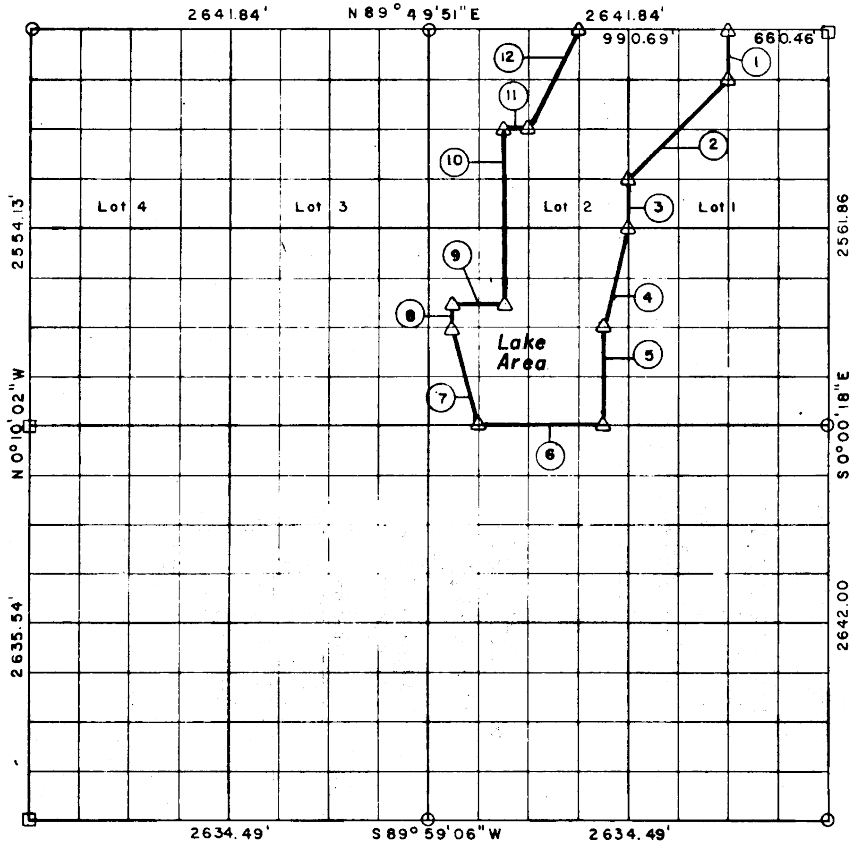


FIL
 PITTSBURG
 BOOK 357
 DATE 1-8

PARTIAL BOUNDARY SURVEYS
 EUFAULA LAKE
 CANADIAN RIVERS, OKLAHOMA
 Performed Under Contract Number DACW 56-73-C-0218
 SEC. 5 , T 8 N, R 16 E PITTSBURG COUNTY



Course No.	Distance	Bearing	Course No.	Distance	Bearing
1	320.11	S 0° 01' 31" E	7	660.46	N 14° 32' 18" W
2	920.49	S 45° 47' 36" W	8	159.89	N 0° 04' 52" W
3	319.99	S 0° 02' 44" E	9	329.92	N 89° 53' 19" E
4	661.07	S 14° 24' 11" W	10	1119.44	N 0° 04' 15" W
5	639.92	S 0° 03' 02" E	11	165.06	N 89° 51' 06" E
6	824.44	S 89° 54' 53" W	12	720.47	N 27° 12' 54" E

Field Book No. E-1188 Date: November, 1973

LEGEND
 Δ MONUMENT
 □ ORIGINAL CORNER
 ○ IRON PIN

M^{CO}COY, MECKLENBURG AND PARR, INC.

Under the Supervision of
 U.S. ARMY ENGINEER DISTRICT, TULSA
 CORPS OF ENGINEERS

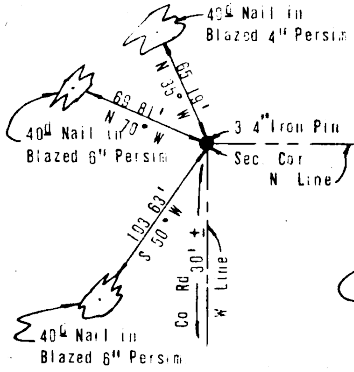
367
 CERTIFICATE OF SURVEY

I HEREBY CERTIFY THAT THE ABOVE PLAT IS A TRUE AND CORRECT REPRESENTATION OF THE SURVEY MADE IN SECTION 5, T 8 N, R 16 E, PITTSBURG COUNTY, OKLAHOMA.

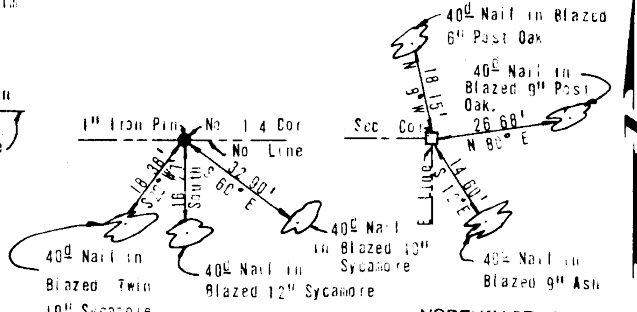
Robert L. McCoy
 ROBERT L. MCCOY
 REGISTERED SURVEYOR NO. 33

FILE
 PITTSBURG
 BOOK 357
 DATE 1-8-

EUFAULA LAKE
 CANADIAN RIVERS, OKLAHOMA
 SECTION AND QUARTER SECTION CORNER
 REFERENCES FOR
 SEC. 5, T 8 N, R 16 E, I.M. PITTSBURG COUNTY

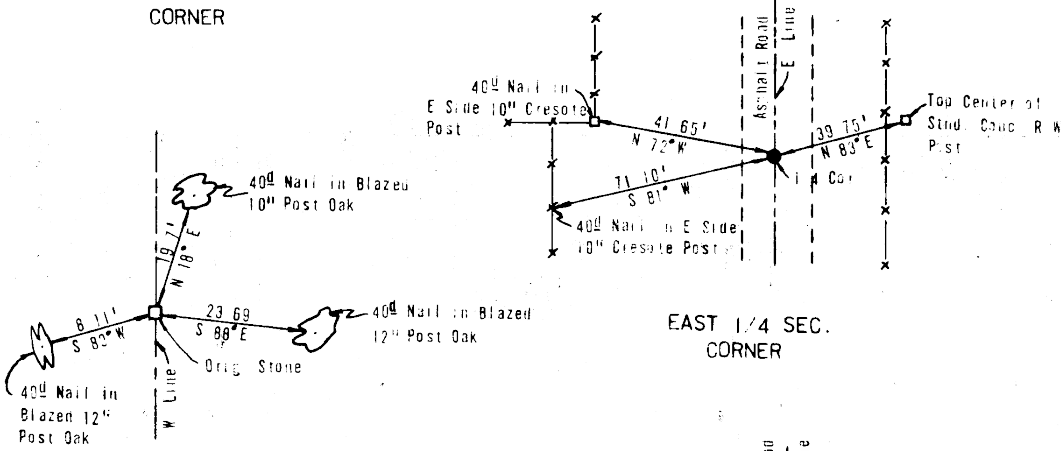


NORTHWEST SEC. CORNER



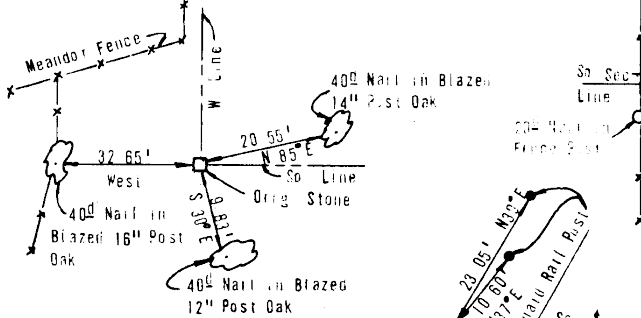
NORTH 1/4 SEC. CORNER

NORTHEAST SEC. CORNER



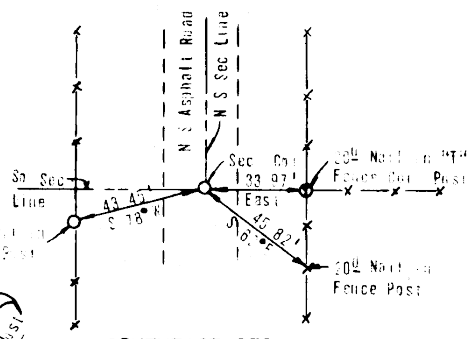
EAST 1/4 SEC. CORNER

WEST 1/4 SEC. CORNER



SOUTHWEST SEC. CORNER

SOUTH 1/4 SEC. CORNER



SOUTHEAST SEC. CORNER

Date
 Field Book No. E 1188

- LEGEND
- ◻ - Monument
 - ◻ - Original Corner
 - - Iron Pin