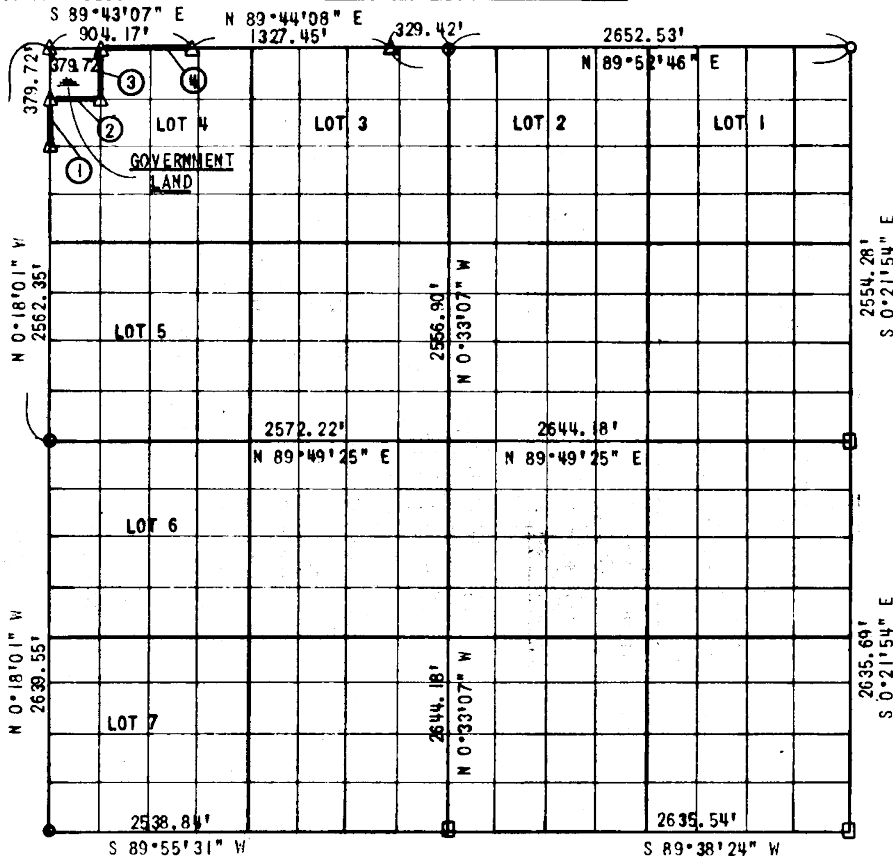


Performed Under Contract No. DACW 56-77-C-0255
 PARTIAL BOUNDARY SURVEY
 EL. LAKE
 SECTION 6, T 8 N, R 16 E PITTSBURG COUNTY



Course No.	Distance	Bearing	Course No.	Distance	Bearing
1	241.62'	N 00°18'01" W			
2	379.72'	S 89°43'07" E			
3	379.72'	N 00°18'01" W			
4	524.45'	S 89°43'07" E			

CERTIFICATE OF SURVEY Field Book No. E-1382 Date: March 15, 1978

I hereby certify that the above plat is a true and correct representation of the survey made in Section 6, T 8 N, R 16 E, Pittsburg County, Oklahoma.

SULLIVAN & GILBERT, INC.
 Consulting Engineers
 Under the supervision of
 U.S. ARMY ENGINEER DISTRICT, TULSA
 CORPS OF ENGINEERS

LEGEND
 Δ C. OF E. MON.
 ○ IRON PIN
 □ ORIG. STONE

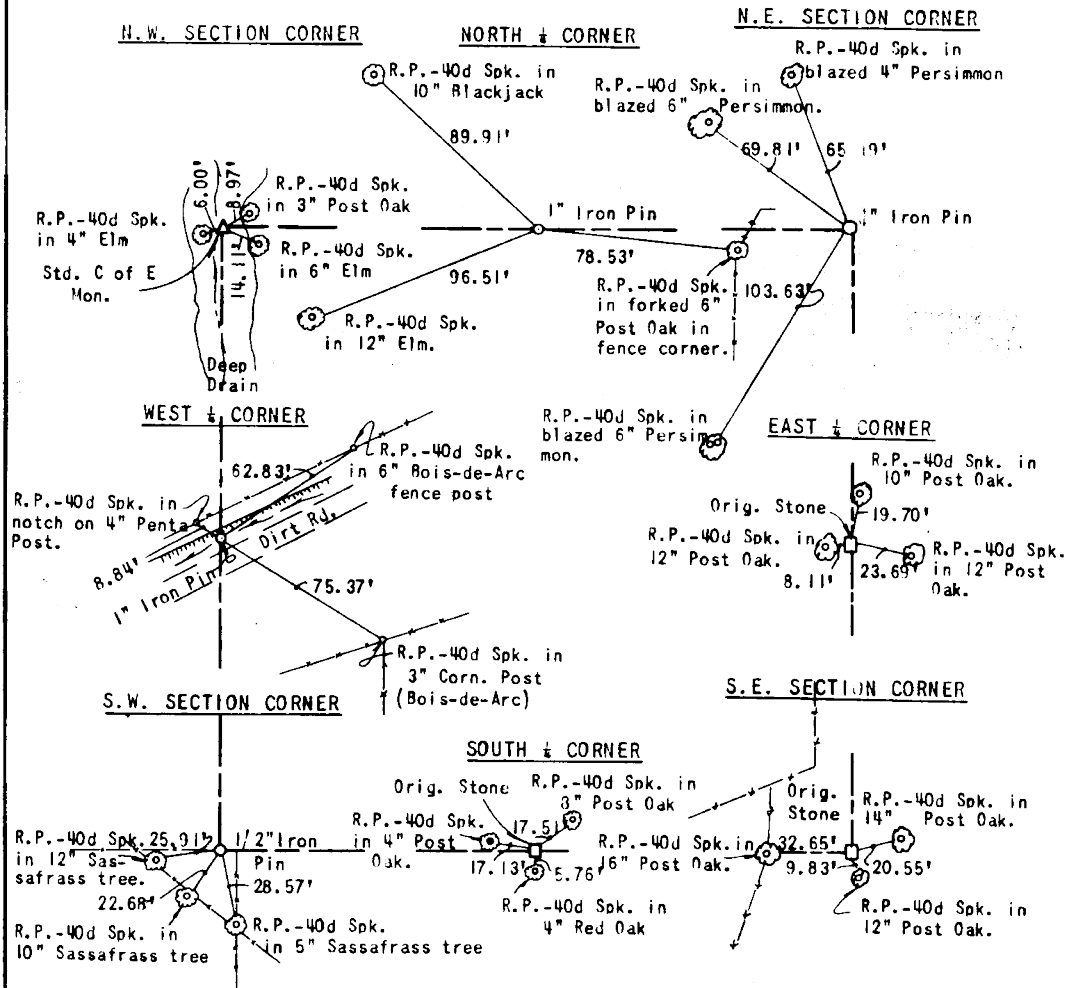
Sullivan & Gilbert
 REGISTERED LAND SURVEYOR L.S. #122

EUFALUA LAKE

SECTION AND QUARTER SECTION

CORNER REFERENCES FOR

SECTION 6, T 8 N, R 16 E, PITTSBURG COUNTY



Scale: 1"=50'
Field Book No. E-1382
Sullivan and Gilbert, Inc.
Date: March 15, 1978