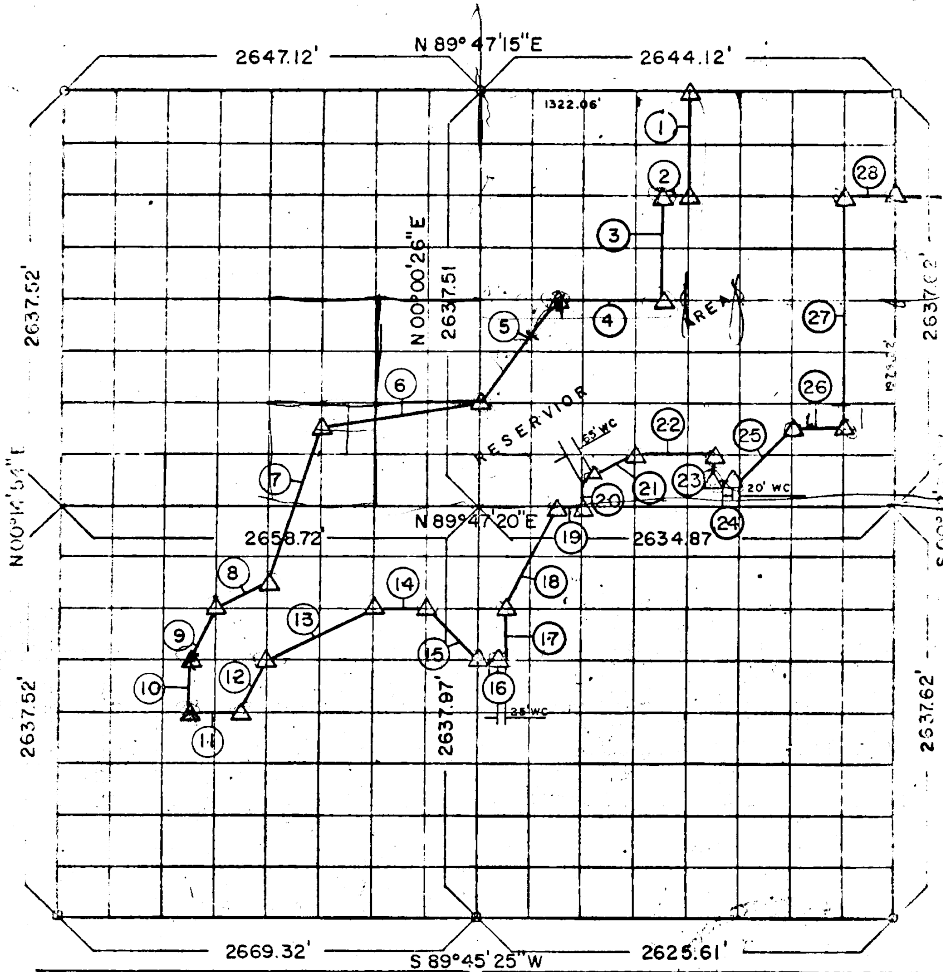


PARTIAL SURVEYS
EUFALA RESERVOIR

Performed Under Contract Number DACW56-70-C-0103

SEC. 9 T-8-N R-16-E COUNTY PITTSBURG



Course No	Distance	Bearing	Course No	Distance	Bearing
1	659.39'	S 00° 06' 28" W	15	467.27'	S 45° 22' 00" W
2	165.11'	S 89° 47' 46" W	16	164.46'	N 89° 48' 07" E
3	659.39'	S 00° 05' 43" W	17	329.51'	N 00° 01' 12" E
4	659.88'	S 89° 47' 16" W	18	737.91'	N 26° 31' 30" E
5	825.96'	S 36° 49' 07" W	19	164.68'	N 89° 47' 19" E
6	1010.22'	S 80° 23' 50" W	20	164.85'	N 00° 03' 27" E
7	1045.03'	S 18° 39' 07" W	21	369.13'	N 63° 15' 32" E
8	372.09'	S 63° 29' 32" W	22	494.25'	N 89° 47' 19" E
9	370.23'	S 26° 52' 07" W	23	164.85'	S 00° 07' 13" W
10	329.63'	S 00° 10' 23" W	24	164.72'	N 89° 47' 19" E
11	332.97'	N 89° 46' 22" E	25	468.01'	N 44° 53' 52" E
12	370.17'	N 26° 51' 19" E	26	329.57'	N 89° 47' 19" E
13	744.21'	N 63° 29' 37" E	27	1483.07'	N 00° 10' 33" E
14	532.62'	N 89° 46' 51" E	28	330.23'	N 89° 47' 16" E

CERTIFICATE OF SURVEY
I HEREBY CERTIFY THAT THE
FIELD WORK AND CALCULATIONS
HEREON WERE MADE IN ACCORDANCE
WITH THE RULES AND REGULATIONS OF
THE BOARD OF SURVEYORS OF THE
STATE OF OKLAHOMA

Field Book No. E-1120, Date 8 OCT 1970
FULLER ASSOCIATES
Consulting Professional Engineers
Under the Supervision of
U.S. ARMY ENGINEER DISTRICT, TULSA
CORPS OF ENGINEERS

Handwritten signature

13709.41