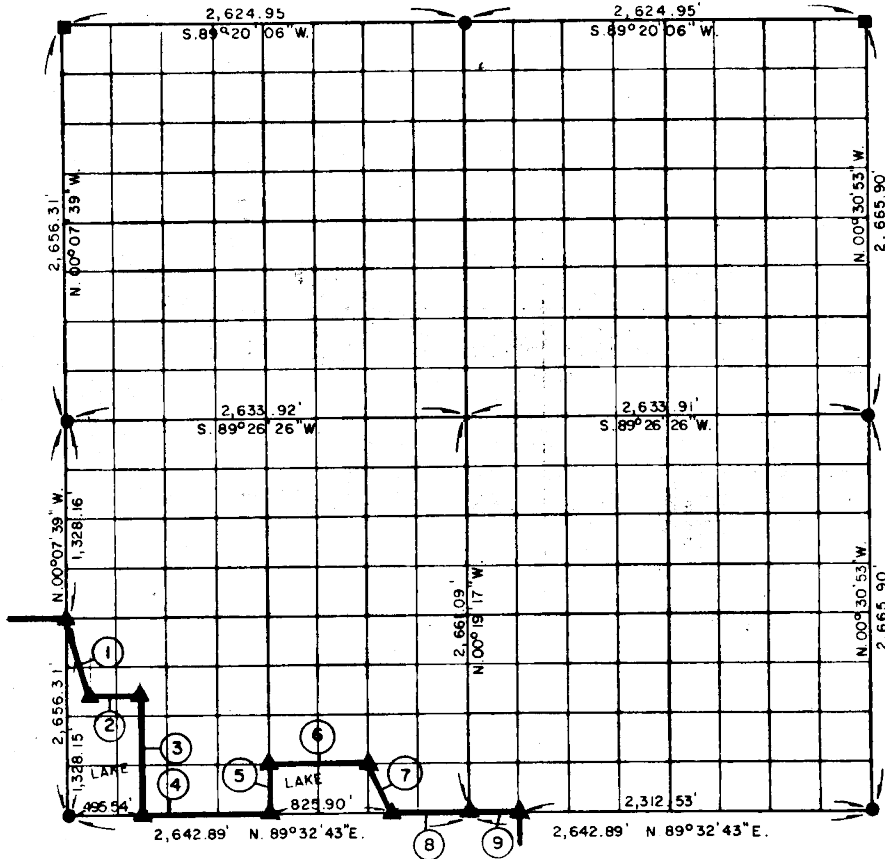


PARTIAL BOUNDARY SURVEYS  
 EUFAULA LAKE  
 OKLAHOMA

Performed Under Contract Number DACW 56-77-C-0257

SEC. 10, T. 8 N., R. 17 E., COUNTY PITTSBURG



Course No.	Distance	Bearing	Course No.	Distance	Bearing
1.	523.69'	S. 18° 29' 34\"E.			
2.	330.01'	N. 89° 30' 45\"E.			
3.	830.38'	S. 00° 09' 50\"E.			
4.	825.90'	N. 89° 32' 43\"E.			
5.	332.34'	N. 00° 13' 28\"W.			
6.	660.44'	N. 89° 31' 56\"E.			
7.	370.79'	S. 26° 43' 38\"E.			
8.	495.55'	N. 89° 32' 43\"E.			
9.	330.36'	N. 89° 32' 43\"E.			

Field Book No. E-1374 Date April, 1978

CERTIFICATE OF SURVEY  
 I hereby certify that the above plat is a true and correct representation of the survey made in Section 10, T. 8 N., R. 17 E., Pittsburg County, Oklahoma.  
 Frank P. [Signature]  
 Registered Professional Engineer  
 Registered Land Surveyor



ENGINEERING CORPORATION  
 Under the Supervision of  
 U.S. ARMY ENGINEER DISTRICT, TULSA  
 CORPS OF ENGINEERS

LEGEND  
 ▲ MONUMENT  
 □ ORIGINAL CORNER  
 ○ IRON PIN

SHEET 1 of 2

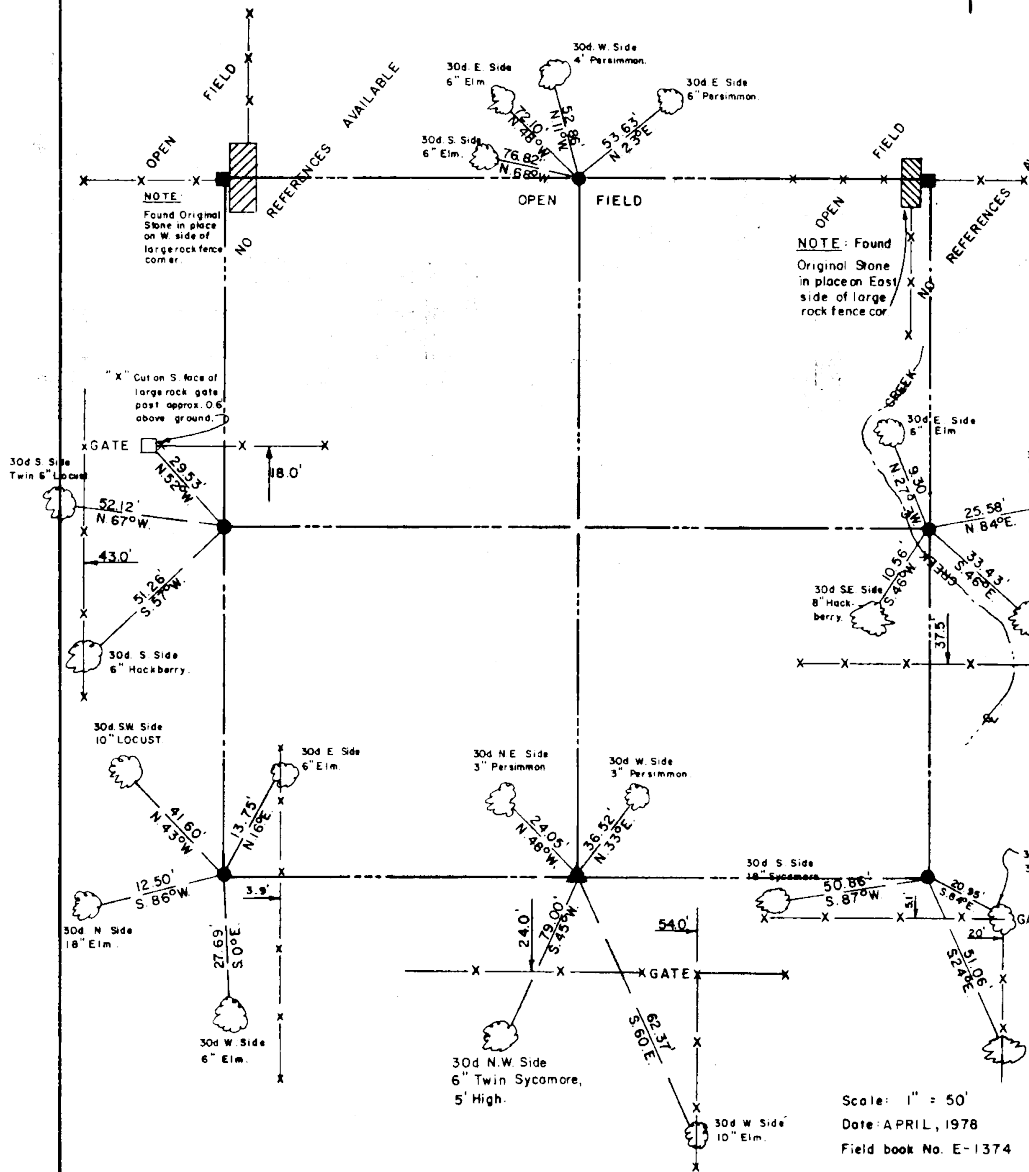
395

# EUFAULA LAKE OKLAHOMA

SECTION AND QUARTER SECTION CORNER  
REFERENCES FOR

SEC. 10, T 8 N, R 17 E

COUNTY-PITTSBURG



**LEGEND**

- △ - Monument
- - Original Corner
- - Iron pin (1")

395