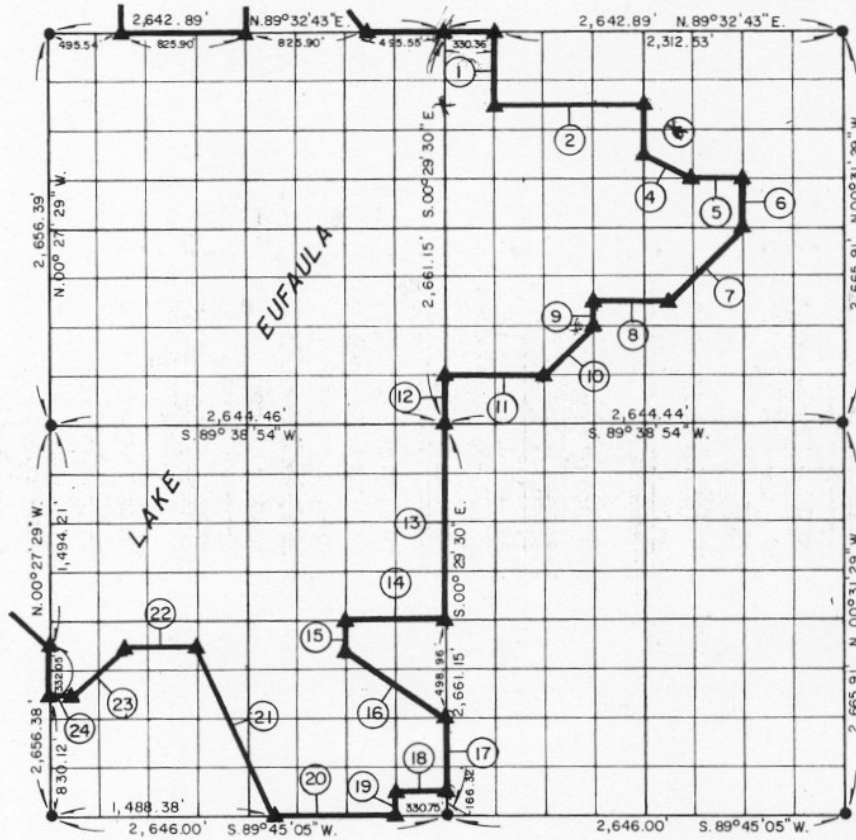


**PARTIAL BOUNDARY SURVEYS  
EUFAULA LAKE  
OKLAHOMA**

Performed Under Contract Number DACW 56-77-C-0257

SEC. 15, T. 8 N., R. 17 E., COUNTY PITTSBURG



Course No.	Distance	Bearing	Course No.	Distance	Bearing
1.	499.08'	S. 00° 29' 45" E.	14.	661.31'	S. 89° 42' 00" W.
2.	991.19'	N. 89° 33' 53" E.	15.	166.25'	S. 00° 29' 00" E.
3.	332.94'	S. 00° 30' 30" E.	16.	741.30'	S. 63° 37' 54" E.
4.	370.24'	S. 63° 41' 46" E.	17.	665.29'	S. 00° 29' 30" E.
5.	330.43'	N. 89° 35' 02" E.	18.	330.74'	S. 89° 44' 42" W.
6.	333.09'	S. 00° 30' 59" E.	19.	166.28'	S. 00° 29' 15" E.
7.	703.03'	S. 44° 19' 31" W.	20.	826.67'	S. 89° 45' 05" W.
8.	495.74'	S. 89° 36' 58" W.	21.	1,266.12'	N. 23° 32' 24" W.
9.	166.43'	S. 00° 30' 15" E.	22.	496.00'	S. 89° 42' 23" W.
10.	468.52'	S. 44° 21' 48" W.	23.	467.95'	S. 44° 30' 00" W.
11.	661.06'	S. 89° 38' 08" W.	24.	165.34'	S. 89° 43' 09" W.
12.	332.64'	S. 00° 29' 30" E.			
13.	1,330.58'	S. 00° 29' 30" E.			

**CERTIFICATE OF SURVEY**

I Herby Certify That The Above Plot is a True and Correct Representation of The Survey Made in Section 15 T. 8 N. R. 17 E., PITTSBURG COUNTY, OKLAHOMA

*Frank P. Pevco*  
Registered Professional Engineer  
Registered Land Surveyor

Field Book No. E-1373

Date April, 1978



**MARCO ENGINEERING CORPORATION**

Under The Supervision Of

**U.S. ARMY ENGINEER DISTRICT, TULSA  
CORPS OF ENGINEERS**

SHEET 1 of 2

**LEGEND**

- ▲ MONUMENT
- ORIGINAL CORNER
- IRON PIN

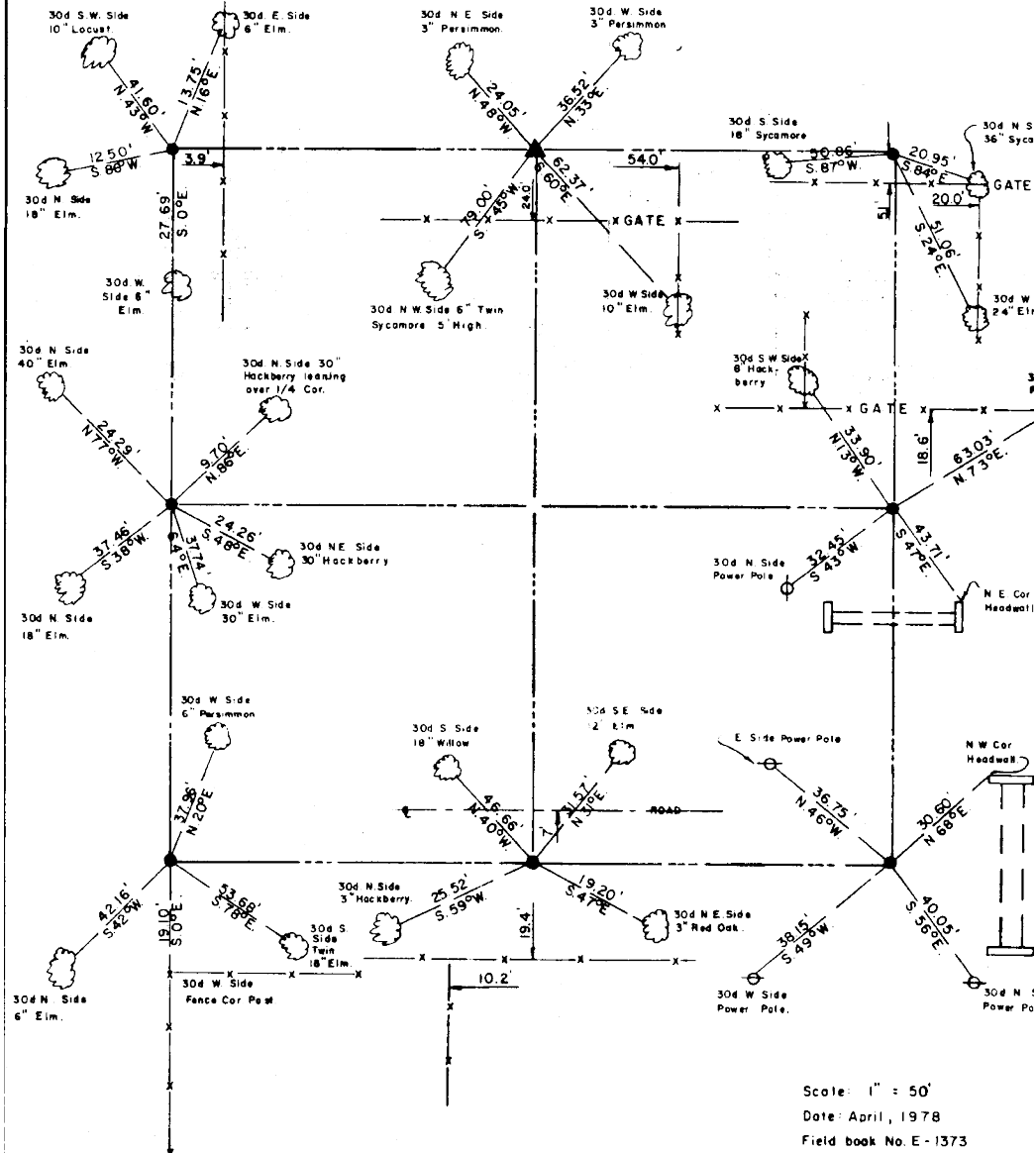
418

# EUFAULA LAKE OKLAHOMA

SECTION AND QUARTER SECTION CORNER  
REFERENCES FOR

SEC. 15 , T 8 N, R 17 E

COUNTY - PITTSBURG



Scale: 1" = 50'  
Date: April, 1978  
Field book No. E-1373

**LEGEND**

- △ - Monument
- - Original Corner
- - iron pin (1')