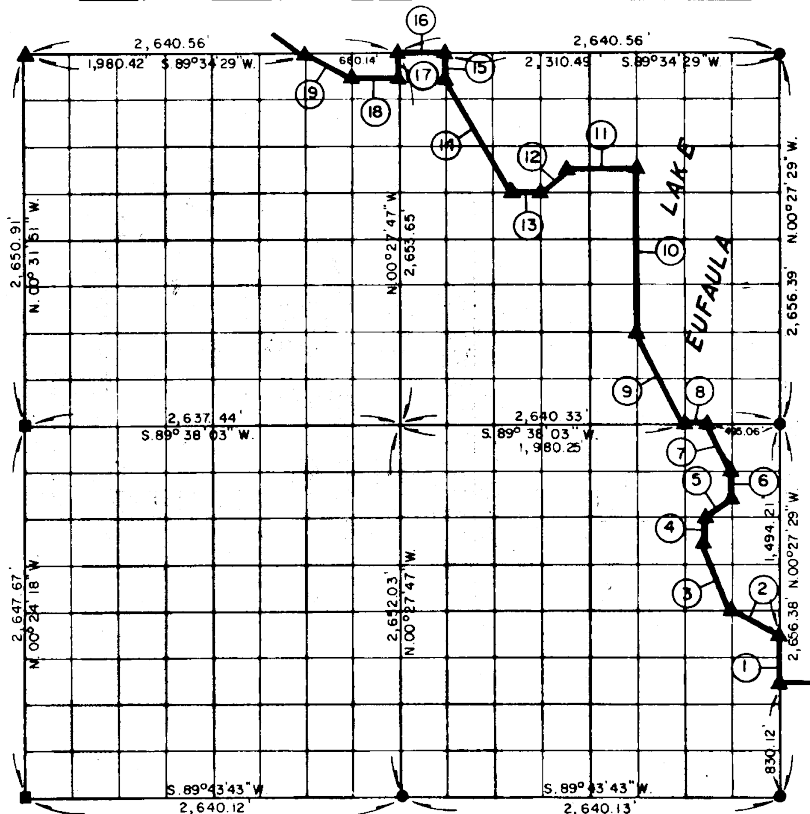


**PARTIAL BOUNDARY SURVEYS  
EUFAULA LAKE  
OKLAHOMA**

Performed Under Contract Number DACW 56-77-C-0257

SEC. 16, T. 8 N., R. 17 E., COUNTY PITTSBURG



Course No.	Distance	Bearing	Course No.	Distance	Bearing
1.	332.05'	N. 00° 27' 29" W.	14.	966.35'	N. 31° 16' 54" W.
2.	369.80'	N. 63° 38' 30" W.	15.	165.87'	N. 00° 27' 45" W.
3.	524.93'	N. 18° 46' 50" W.	16.	330.07'	S. 89° 34' 29" W.
4.	165.97'	N. 00° 27' 32" W.	17.	165.85'	S. 00° 27' 47" E.
5.	233.82'	N. 44° 25' 51" E.	18.	330.04'	S. 89° 34' 42" W.
6.	165.99'	N. 00° 27' 31" W.	19.	369.52'	N. 63° 45' 37" W.
7.	370.97'	N. 26° 52' 16" W.			
8.	165.02'	S. 89° 38' 03" W.			
9.	741.84'	N. 26° 52' 35" W.			
10.	1,161.72'	N. 00° 27' 36" W.			
11.	495.09'	S. 89° 35' 36" W.			
12.	233.90'	S. 44° 24' 45" W.			
13.	165.03'	S. 89° 35' 49" W.			

Field Book No. E-1372      Date April, 1978

**CERTIFICATE OF SURVEY**

I hereby Certify That The Above Plat is a True and Correct Representation of The Survey Made in Section 16 T. 8 N., R. 17 E., PITTSBURG COUNTY, OKLAHOMA

*Frank P. Paine*  
Registered Professional Engineer  
Registered Land Surveyor



**ENGINEERING CORPORATION**

Under The Supervision Of

**U.S. ARMY ENGINEER DISTRICT, TULSA  
CORPS OF ENGINEERS**

SHEET 1 of 2

**LEGEND**

- ▲ MONUMENT
- ORIGINAL CORNER
- IRON PIN

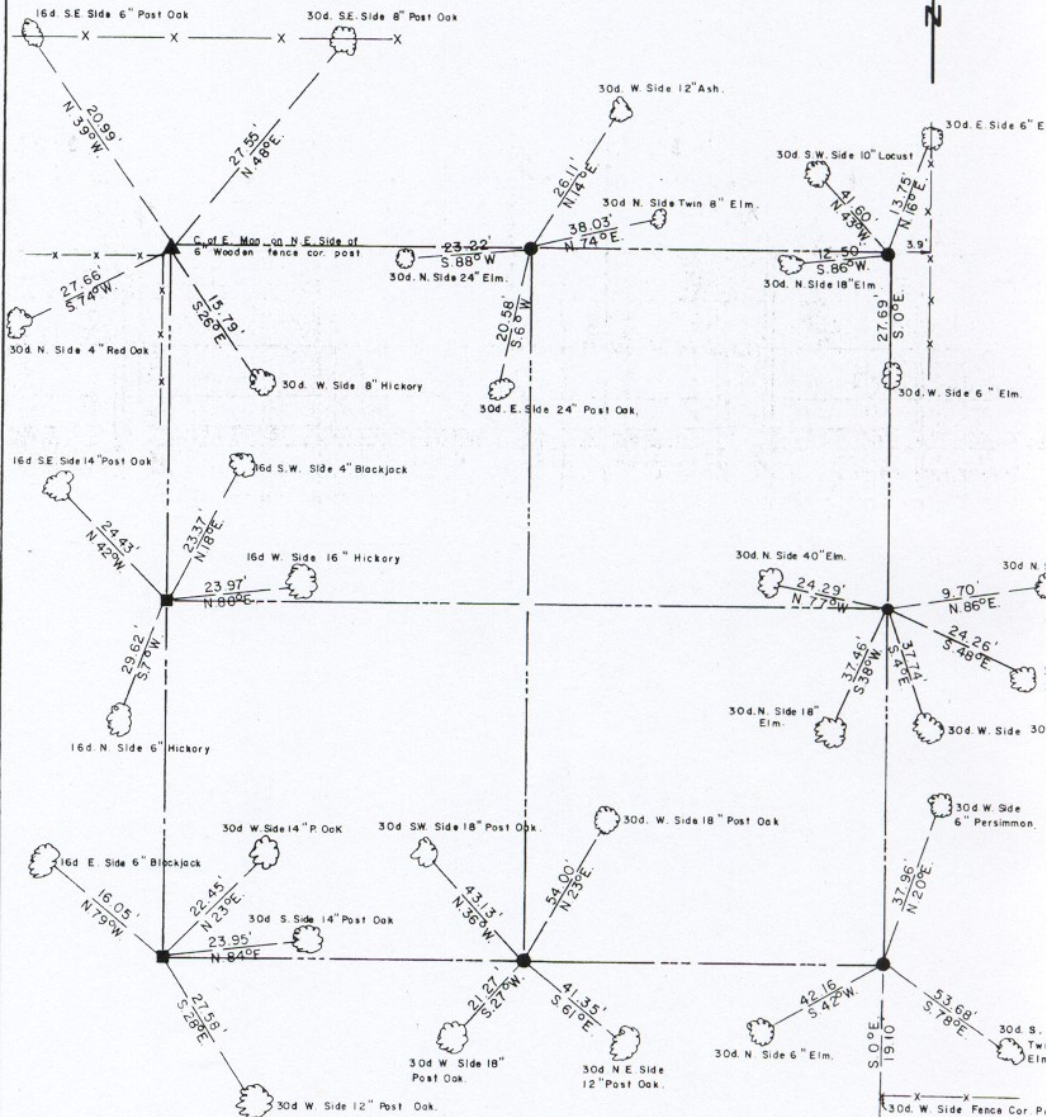
417

# EUFAULA LAKE OKLAHOMA

SECTION AND QUARTER SECTION CORNER  
REFERENCES FOR

SEC. 16 , T 8 N, R 17E

COUNTY-PITTSBURG



Scale: 1" = 50'  
Date: April, 1978  
Field book No. E-1372

- LEGEND**
- △ - Monument
  - - Original Corner
  - - Iron pin (1")