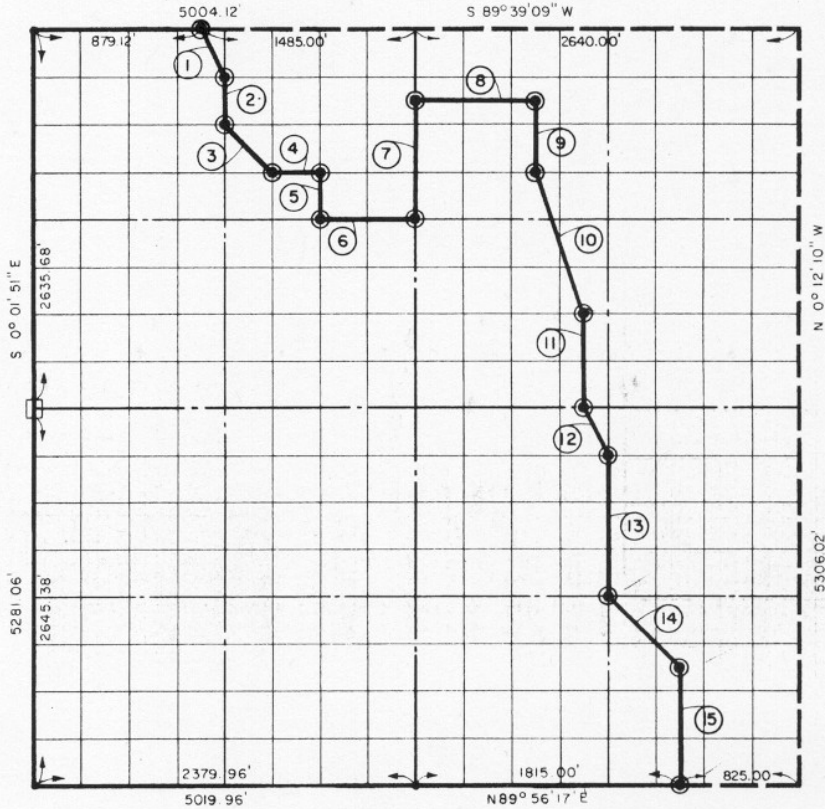


18, T 8 N, R 17 W OSBURG COUNTY.

- ⊙ B. CAP IN CONCRETE
- ORIGINAL STONE
- IRON PIN



COURSE NO.	DISTANCE	BEARING	COURSE NO.	DISTANCE	BEARING
①	368.25'	S 26° 41' 37" E	⑩	1045.97'	S 18° 35' 37" E
②	329.82'	S 0° 19' 52" E	⑪	661.97'	S 0° 12' 10" E
③	466.34'	S 45° 14' 44" E	⑫	370.32'	S 26° 39' 42" E
④	330.00'	N 89° 43' 37" E	⑬	994.13'	S 0° 12' 10" E
⑤	330.20'	S 0° 12' 10" "	⑭	702.19'	S 45° 01' 37" E
⑥	660.00'	N 89° 45' 07" E	⑮	828.67'	S 0° 12' 10" E
⑦	826.20'	N 0° 12' 10" W		9231.32	
⑧	825.00'	N 89° 41' 23" E			
⑨	496.26'	S 0° 12' 10" E			

E-1070

I, John Carney, a Registered Professional Engineer, do hereby certify that the above plat is a true and accurate survey of Sec. 18, T. 8 N., R. 17 E as made under my supervision.

John Carney
 JOHN CARNEY
 Reg. Prof. Engr. No. 137