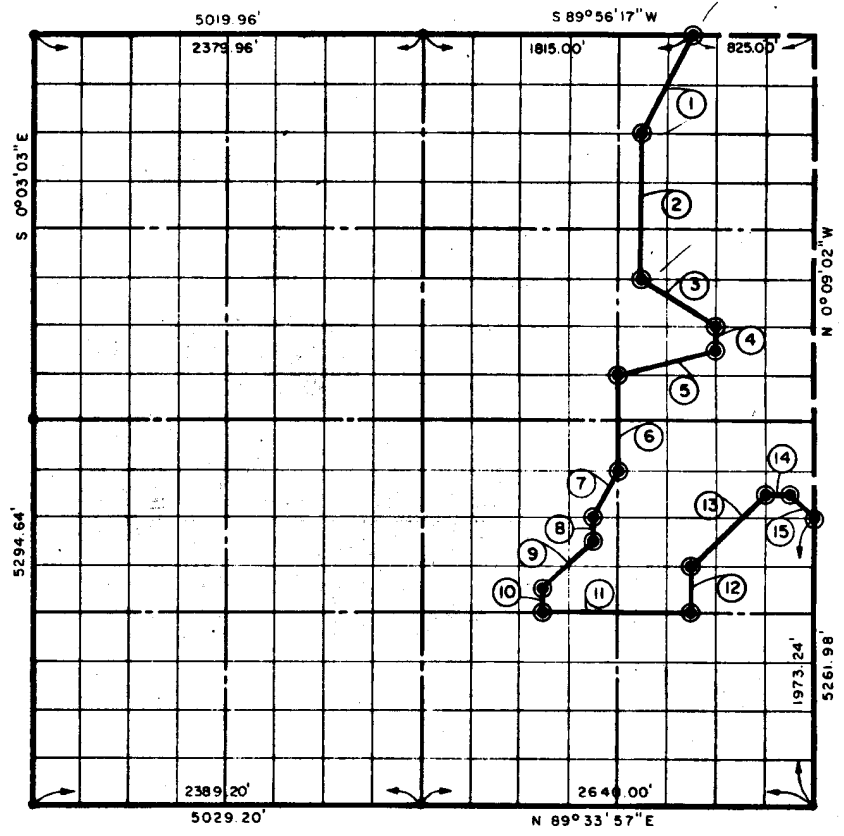


ON 19, T 8 N, R 17 E ITTSBURG COUNTY.

- ⊙ BRASS CAP IN CONCRETE
- ORIGINAL STONE
- IRON PIN



COURSE NO.	DISTANCE	BEARING	COURSE NO.	DISTANCE	BEARING
①	736.27'	S 26° 28' 40" W	⑩	164.80'	S 0° 09' 02" E
②	988.03'	S 0° 09' 03" E	⑪	989.99'	N 89° 39' 32" E
③	594.30'	S 56° 32' 54" E	⑫	329.21'	N 0° 09' 02" W
④	164.57'	S 0° 09' 01" E	⑬	700.00'	N 44° 51' 06" E
⑤	680.41'	S 75° 46' 41" W	⑭	165.00'	N 89° 43' 01" E
⑥	658.82'	S 0° 09' 03" E	⑮	232.68'	S 45° 18' 53" E
⑦	368.79'	S 26° 25' 36" W		7909.66	
⑧	164.74'	S 0° 09' 03" E			
⑨	467.05'	S 44° 48' 19" W			

EU-1071

I, John Carney, a Registered Professional Engineer, do hereby certify that the above plat is a true and accurate survey of Sec. 19, T. 8 N., R. 17 E as made under my supervision

*John Carney*  
 JOHN CARNEY  
 Reg. Prof. Engr. No. 137