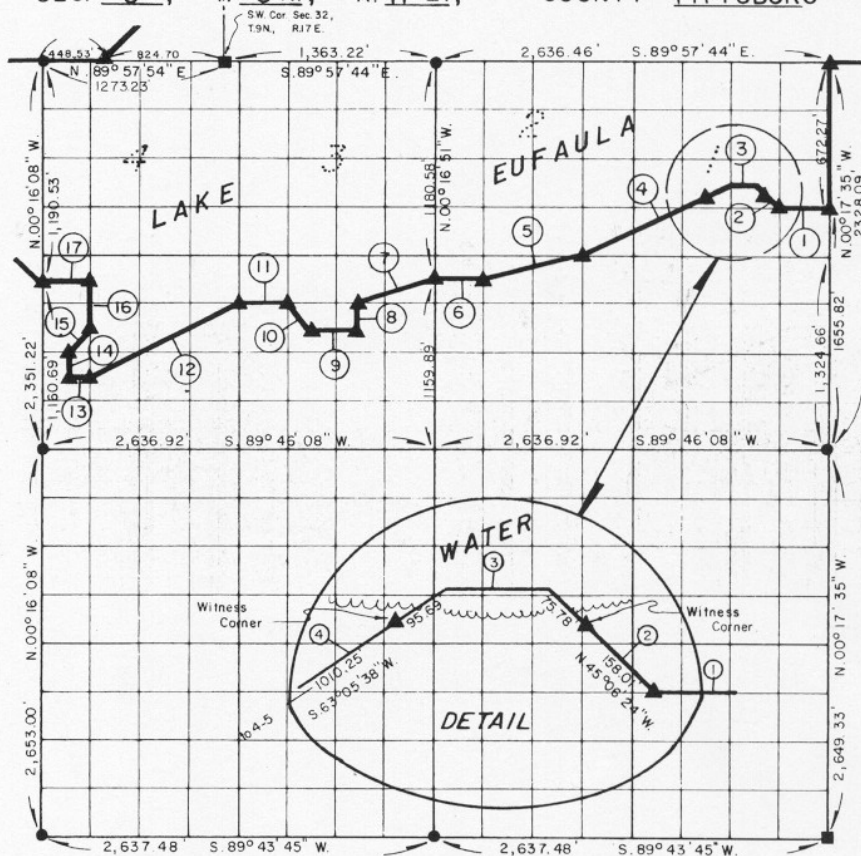


**PARTIAL BOUNDARY SURVEYS
EUFAULA LAKE
OKLAHOMA**

Performed Under Contract Number DACW 56-77-C-0257

SEC. 5, T. 8 N., R. 17 E., COUNTY PITTSBURG



Course No.	Distance	Bearing	Course No.	Distance	Bearing
1.	329.57'	S. 89° 47' 38" W.	14.	165.80'	N. 00° 16' 11" W.
2.	233.79'	N. 45° 06' 24" W.	15.	233.67'	N. 44° 34' 51" E.
3.	164.78'	S. 89° 47' 47" W.	16.	331.60'	N. 00° 16' 13" W.
4.	1,105.94'	S. 63° 05' 38" W.	17.	329.56'	S. 89° 47' 11" W.
5.	679.46'	S. 75° 40' 31" W.			
6.	329.58'	S. 89° 47' 11" W.			
7.	521.23'	S. 71° 14' 53" W.			
8.	165.72'	S. 00° 16' 43" E.			
9.	329.59'	S. 89° 46' 53" W.			
10.	233.84'	N. 45° 05' 03" W.			
11.	329.59'	S. 89° 47' 02" W.			
12.	1,106.40'	S. 63° 04' 06" W.			
13.	164.80'	S. 89° 46' 35" W.			

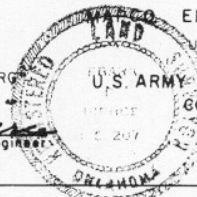
Field Book No. E-1379 Date April, 1978

CERTIFICATE OF SURVEY

I hereby Certify That The Above Plat is a True and Correct Representation of The Survey Made in Section

5 T. 8 N., R. 17 E., PITTSBURG COUNTY, OKLAHOMA

Frank P. Pusey
Registered Professional Engineer
Registered Land Surveyor



ENGINEERING CORPORATION

Under The Supervision Of

U.S. ARMY ENGINEER DISTRICT, TULSA
CORPS OF ENGINEERS

SHEET 1 of 2

LEGEND

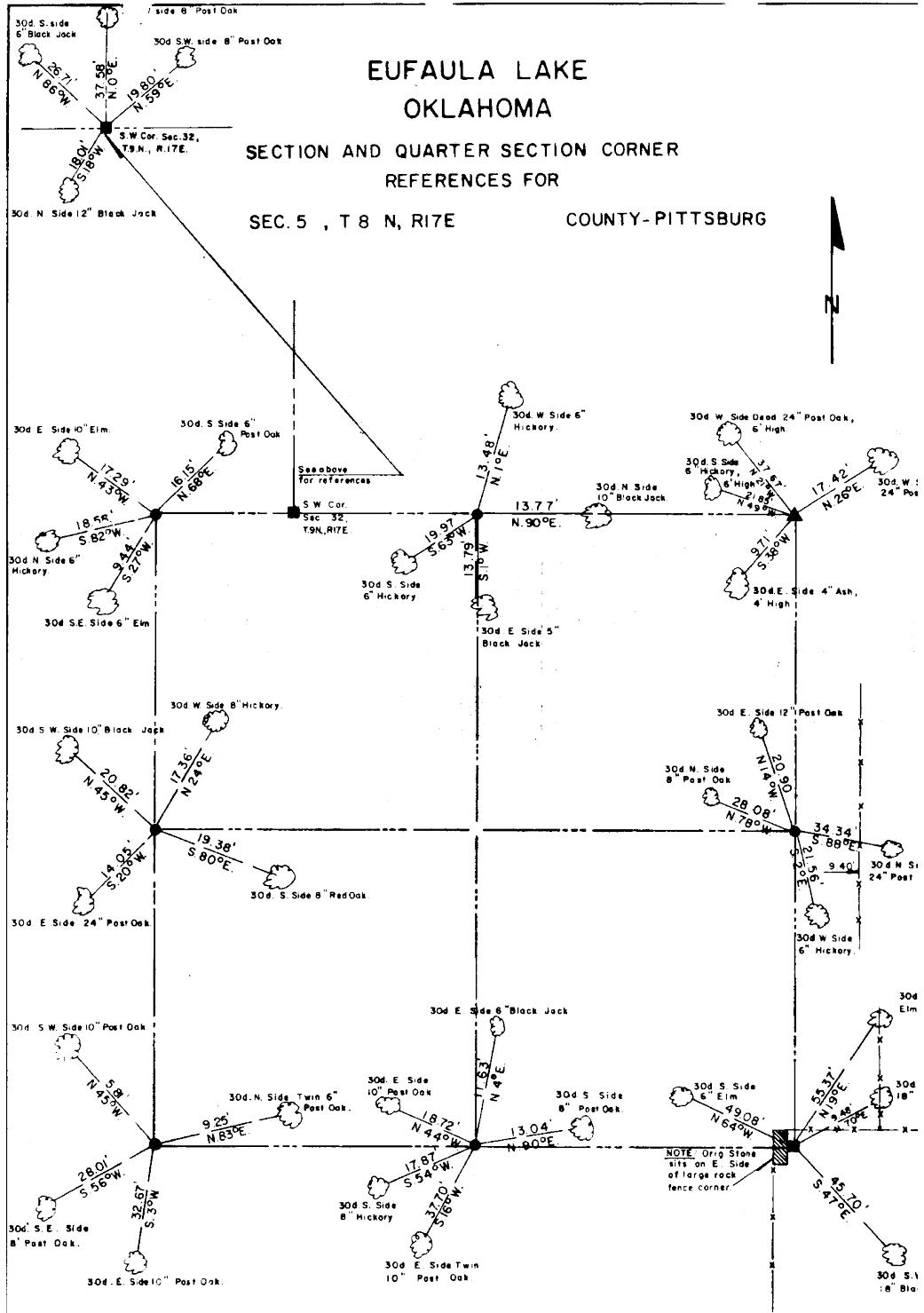
- ▲ MONUMENT
- ORIGINAL CORNER
- IRON PIN

373

EUFAULA LAKE OKLAHOMA

SECTION AND QUARTER SECTION CORNER REFERENCES FOR

SEC. 5 , T 8 N, R17E COUNTY- PITTSBURG



Scale 1" = 50'
Date April, 1978
Field book No E-1379

- LEGEND**
- Δ - Monument
 - - Original Corner
 - - Iron pin (1")