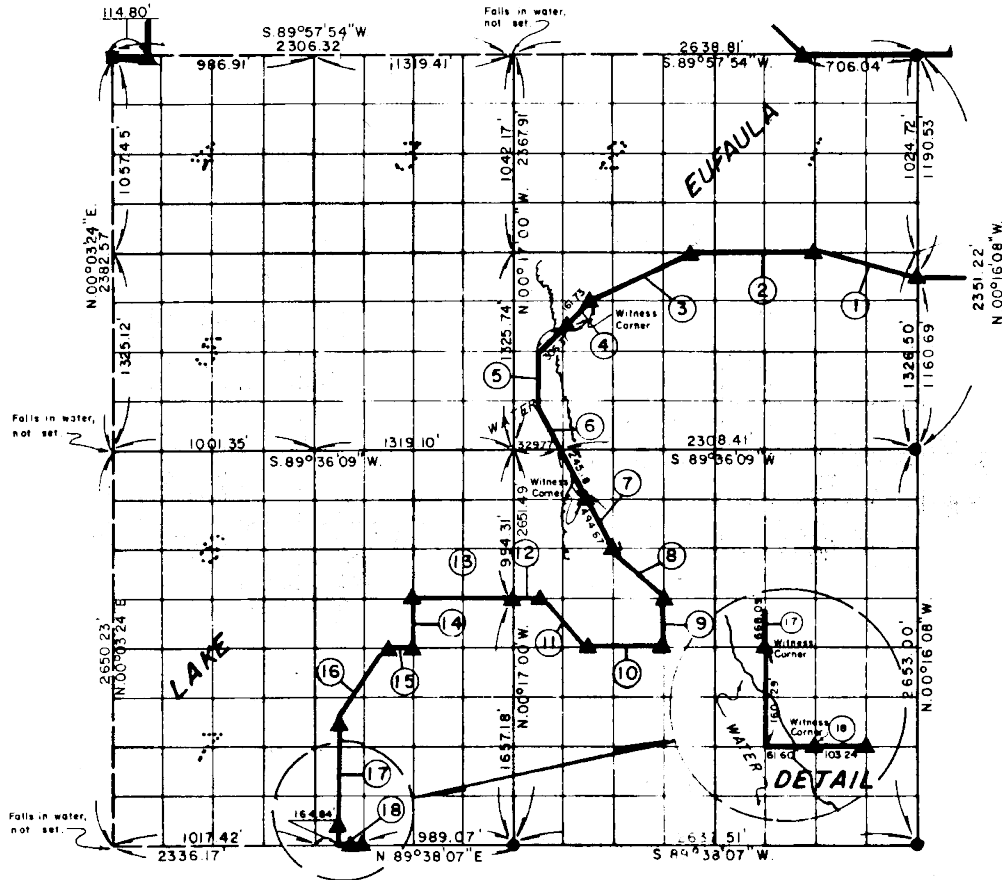


PARTIAL BOUNDARY SURVEYS
EUFALA LAKE
OKLAHOMA

Performed Under Contract Number DACW 56-77-C-0257

SEC. 6, T. 8 N., R. 17 E., COUNTY PITTSBURG



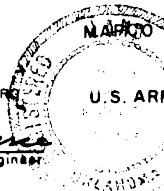
Course No.	Distance	Bearing	Course No.	Distance	Bearing
1	679.74'	N 76°17'42" W.	14	331.39'	S 00°17'14" E.
2	824.54'	S 89°35'10" W.	15	164.87'	S 89°37'08" W.
3	738.92'	S 62°55'59" W.	16	596.89'	S 33°14'33" W.
4	468.10'	S 44°30'43" W.	17	828.38'	S 00°17'24" E.
5	331.45'	S 00°16'57" E.	18	164.84'	N 89°38'07" E.
6	369.90'	S 26°45'04" E.			
7	739.85'	S 26°45'04" E.			
8	467.13'	S 45°10'52" E.			
9	331.51'	S 00°16'41" E.			
10	494.60'	S 89°37'08" W.			
11	467.12'	N 45°10'58" W.			
12	164.87'	S 89°36'53" W.			
13	659.48'	S 89°36'53" W.			

Field Book No. E-1378 Date April, 1978

CERTIFICATE OF SURVEY

I hereby Certify That The Above Plat is a True and Correct Representation of The Survey Made in Section 6, T. 8 N., R. 17 E., PITTSBURG COUNTY, OKLAHOMA

Frank P. Davis
Registered Professional Engineer
Registered Land Surveyor



ENGINEERING CORPORATION

Under The Supervision Of

U.S. ARMY ENGINEER DISTRICT, TULSA
CORPS OF ENGINEERS

SHEET 1 of 2

LEGEND

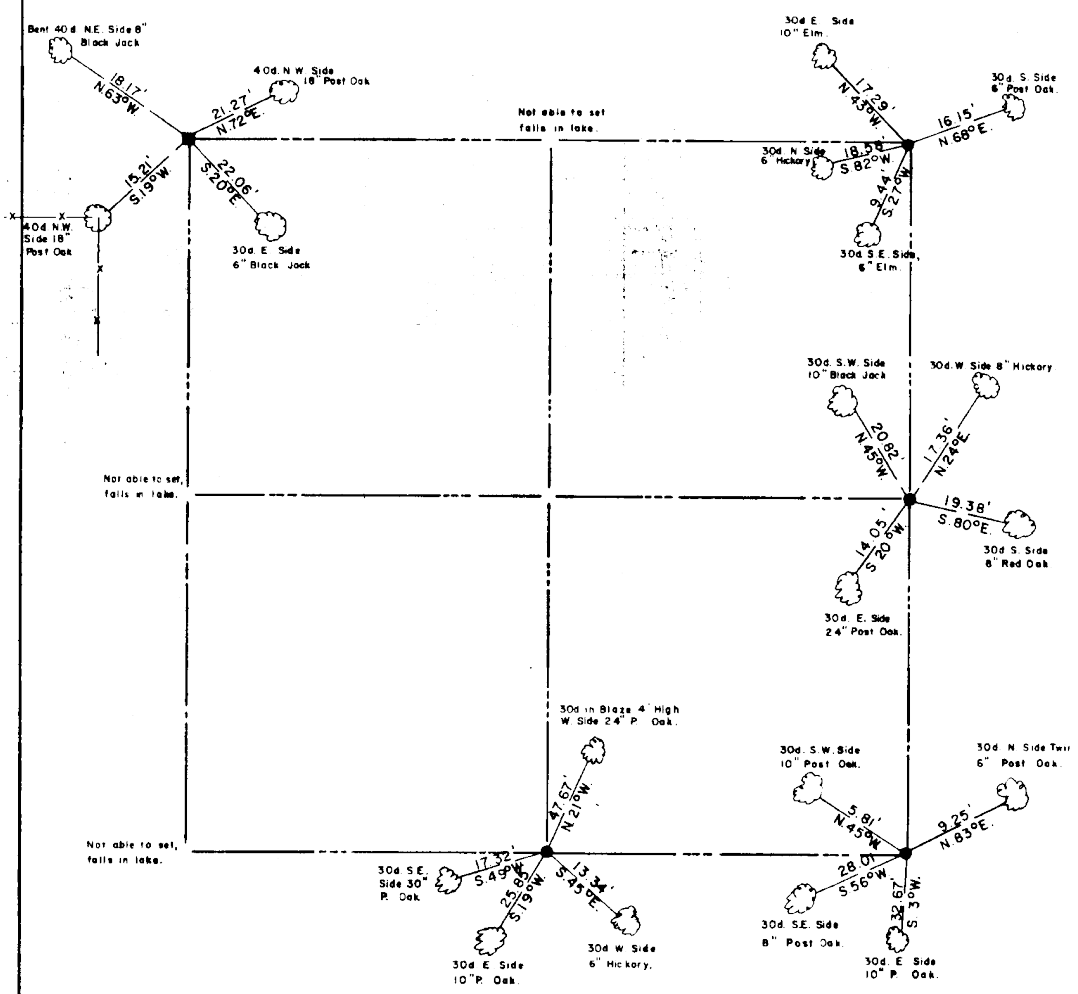
- ▲ MONUMENT
- ORIGINAL CORNER
- IRON PIN

EUFAULA LAKE OKLAHOMA

SECTION AND QUARTER SECTION CORNER
REFERENCES FOR

SEC. 6, T 8 N, R 17 E

COUNTY - PITTSBURG



Scale: 1" = 50'
Date: April, 1978
Field book No. E-1378

- LEGEND**
- Δ - Monument
 - - Original Corner
 - - Iron pin (1")

372