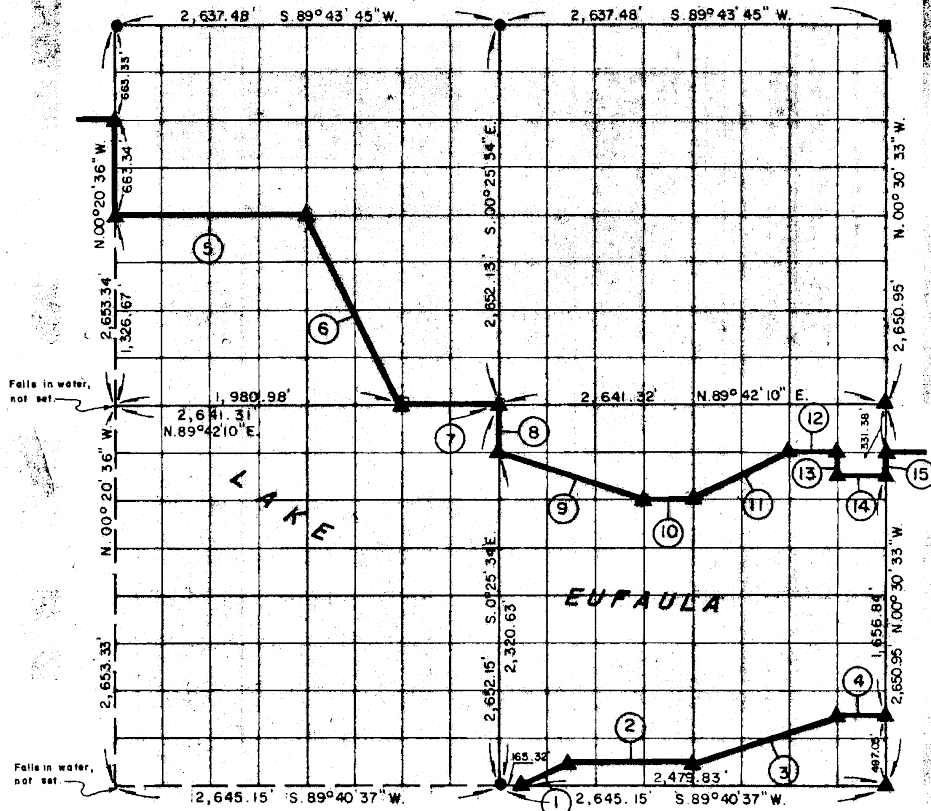


**PARTIAL BOUNDARY SURVEYS
EUFAULA LAKE
OKLAHOMA**

Performed Under Contract Number DACW 56-77-C-0257

SEC. 8, T. 8 N., R. 17 E., COUNTY PITTSBURG



Course No.	Distance	Bearing	Course No.	Distance	Bearing
1.	369.55'	N. 63° 01' 47" E.	14.	330.25'	N. 89° 41' 53" E.
2.	826.53'	N. 89° 40' 43" E.	15.	165.68'	N. 00° 30' 33" W.
3.	1,044.76'	N. 71° 11' 09" E.			
4.	330.55'	N. 89° 40' 54" E.			
5.	1,319.70'	N. 89° 42' 58" E.			
6.	1,482.55'	S. 26° 50' 01" E.			
7.	660.33'	N. 89° 42' 10" E.			
8.	331.52'	S. 00° 25' 34" E.			
9.	1,045.51'	S. 71° 49' 01" E.			
10.	330.28'	N. 89° 41' 47" E.			
11.	738.09'	N. 63° 00' 59" E.			
12.	330.22'	N. 89° 41' 58" E.			
13.	165.69'	S. 00° 29' 56" E.			

CERTIFICATE OF SURVEY

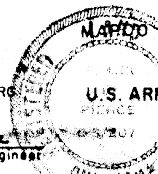
I Herby Certify That The Above Plat is a True and Correct Representation of The Survey Made in Section

8, T. 8 N., R. 17 E., PITTSBURG COUNTY, OKLAHOMA

Frank P. Dierck
Professional Engineer
Surveyor

Field Book No. E-1376

Date April, 1978



ENGINEERING CORPORATION

Under The Supervision Of

U.S. ARMY ENGINEER DISTRICT, TULSA
CORPS OF ENGINEERS

SHEET 1 of 2

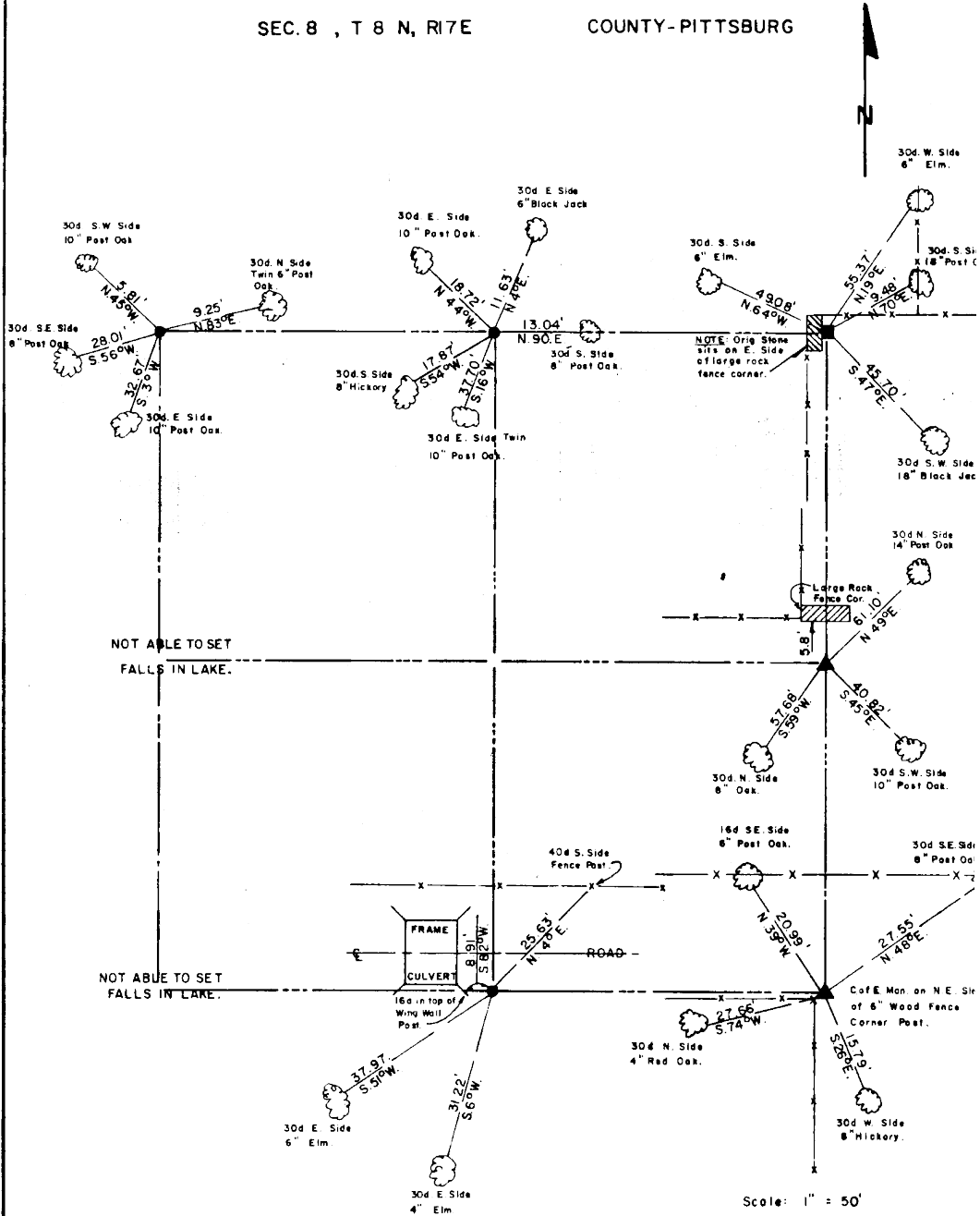
LEGEND

- ▲ MONUMENT
- ORIGINAL CORNER
- IRON PIN

EUFAULA LAKE OKLAHOMA

SECTION AND QUARTER SECTION CORNER
REFERENCES FOR

SEC. 8 , T 8 N, R 7E COUNTY-PITTSBURG



- LEGEND**
- △ - Monument
 - - Original Corner
 - - Iron pin (1")