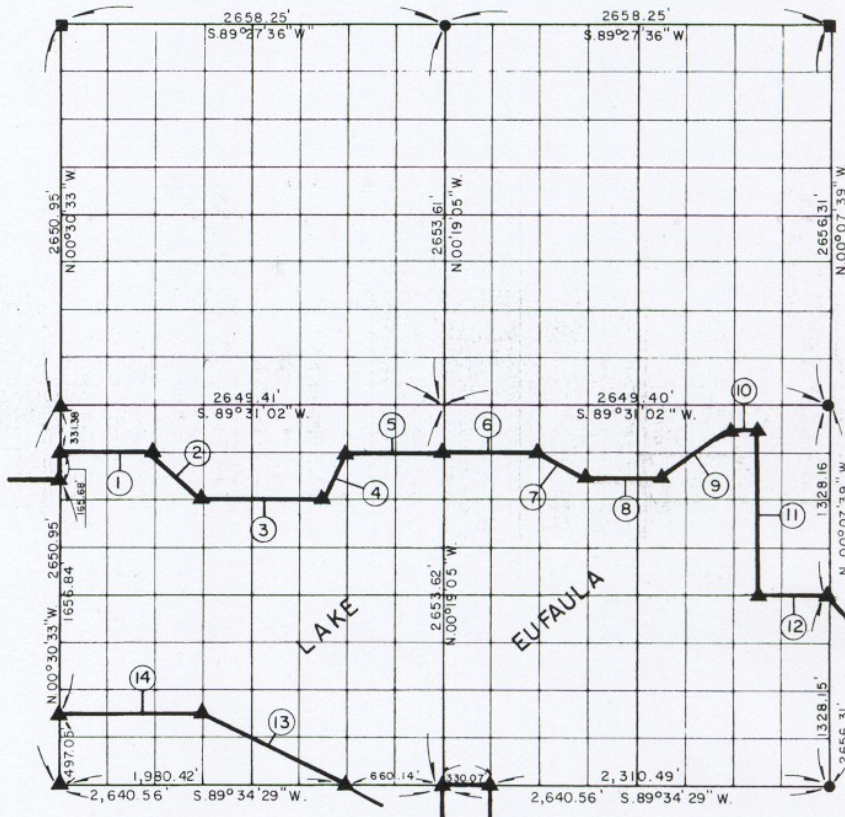


PARTIAL BOUNDARY SURVEYS
 EUFAULA LAKE
 OKLAHOMA

Performed Under Contract Number DACW 56-77-C-0257

SEC. 9, T. 8 N., R. 17 E., COUNTY PITTSBURG



Course No.	Distance	Bearing	Course No.	Distance	Bearing
1.	662.08'	N 89° 31' 28" E.	14.	990.83'	S 89° 33' 50" W.
2.	468.32'	S 45° 25' 02" E.			
3.	827.25'	N 89° 31' 54" E.			
4.	370.86'	N 26° 07' 44" E.			
5.	662.08'	N 89° 31' 28" E.			
6.	662.08'	N 89° 31' 28" E.			
7.	369.69'	S 63° 48' 36" E.			
8.	496.45'	N 89° 31' 41" E.			
9.	598.64'	N 55° 51' 04" E.			
10.	165.55'	N 89° 31' 15" E.			
11.	1,161.92'	S 00° 09' 48" E.			
12.	495.93'	N 89° 32' 46" E.			
13.	1,108.14'	N 63° 45' 50" W.			

CERTIFICATE OF SURVEY

I hereby Certify That The Above Plot is a True and Correct Representation of The Survey Made in Section 9 T. 8 N. R. 17 E., PITTSBURG COUNTY, OKLAHOMA

Frank P. Pierce
 Registered Professional Engineer
 Registered Land Surveyor

Field Book No. E-1375 Date April, 1978
 MAPCO ENGINEERING CORPORATION
 Under The Supervision Of
 U.S. ARMY ENGINEER DISTRICT, TULSA
 CORPS OF ENGINEERS
 SHEET 1 of 2

LEGEND

- ▲ MONUMENT
- ORIGINAL CORNER
- IRON PIN

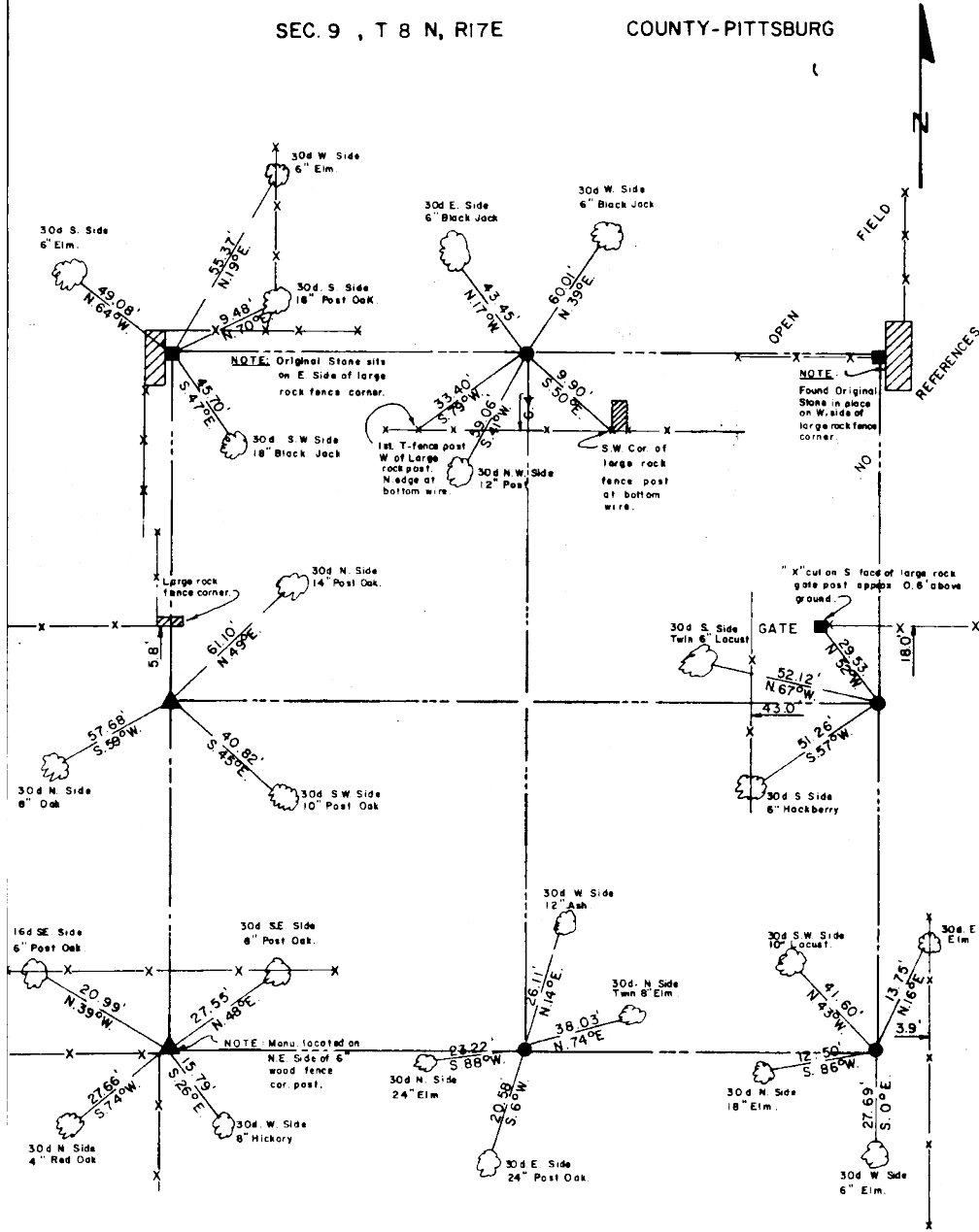
394

EUFAULA LAKE OKLAHOMA

SECTION AND QUARTER SECTION CORNER REFERENCES FOR

SEC. 9 , T 8 N, R17E

COUNTY-PITTSBURG



Scale: 1" = 50'
Date: APRIL, 1978
Field book No. E-1375

- LEGEND**
- Δ - Monument
 - - Original Corner
 - - Iron pin (1")