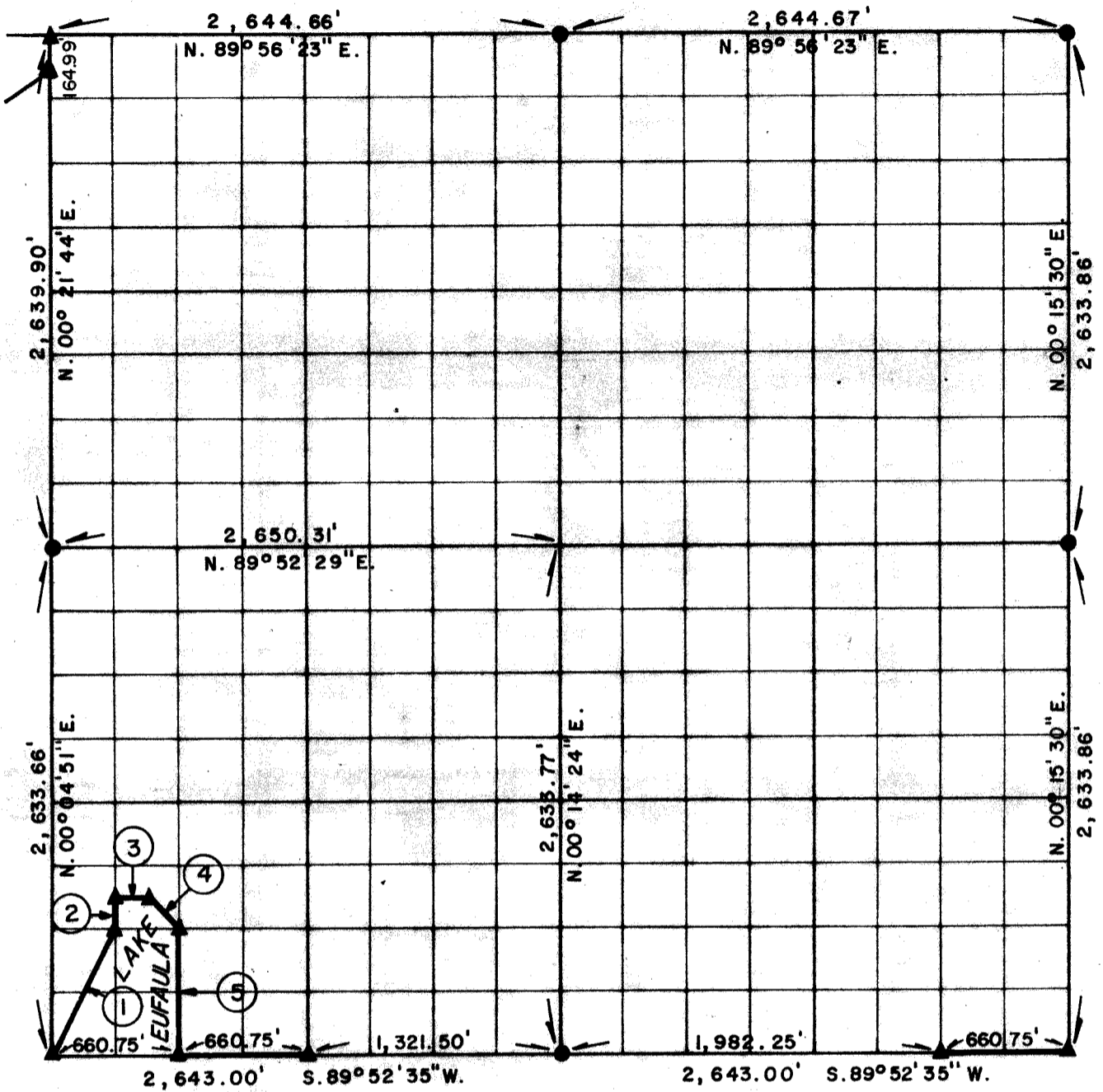


**PARTIAL BOUNDARY SURVEYS
EUFAULA LAKE
OKLAHOMA**

Performed Under Contract Number DACW 56-76-C-0238

SEC. 10, T. 9 N., R. 15 E., COUNTY McINTOSH



Course No.	Distance	Bearing	Course No.	Distance	Bearing
1.	737.81'	N. 26° 42' 06\" E.			
2.	164.60'	N. 00° 06' 02\" E.			
3.	165.33'	N. 89° 52' 33\" E.			
4.	232.80'	S. 45° 07' 41\" E.			
5.	658.42'	S. 00° 07' 14\" W.			

Field Book No. E1269 Date MARCH, 1977

CERTIFICATE OF SURVEY

I Hereby Certify That The Above Plat is a True and Correct Representation of The Survey Made in Section 10 T. 9 N., R. 15 E., McINTOSH COUNTY, OKLAHOMA

MAPCO ENGINEERING CORPORATION
Under The Supervision Of
U.S. ARMY ENGINEER DISTRICT, TULSA
CORPS OF ENGINEERS
SHEET 1 of 2

LEGEND

- ▲ MONUMENT
- ORIGINAL CORNER
- IRON PIN

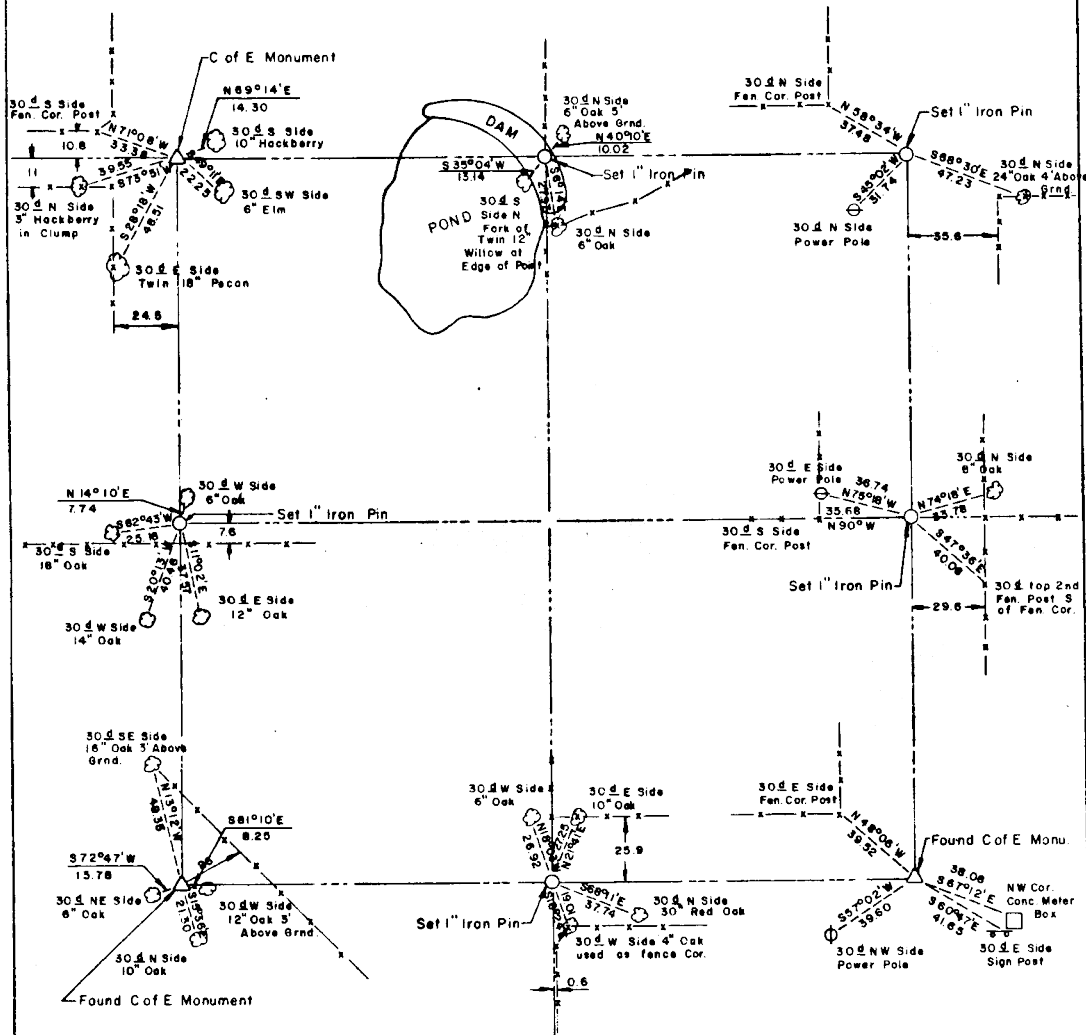
Frank P. Pierce
Registered Professional Engineer
Registered Land Surveyor

EUFAULA LAKE OKLAHOMA

SECTION AND QUARTER SECTION CORNER
REFERENCES FOR

SEC 10 , T 9 N, R15 E

COUNTY - MCINTOSH



Scale: 1" = 50'
Date: March, 1977
Field book No E 1269

- LEGEND**
- △ - Monument
 - - Original Corner
 - - Iron pin