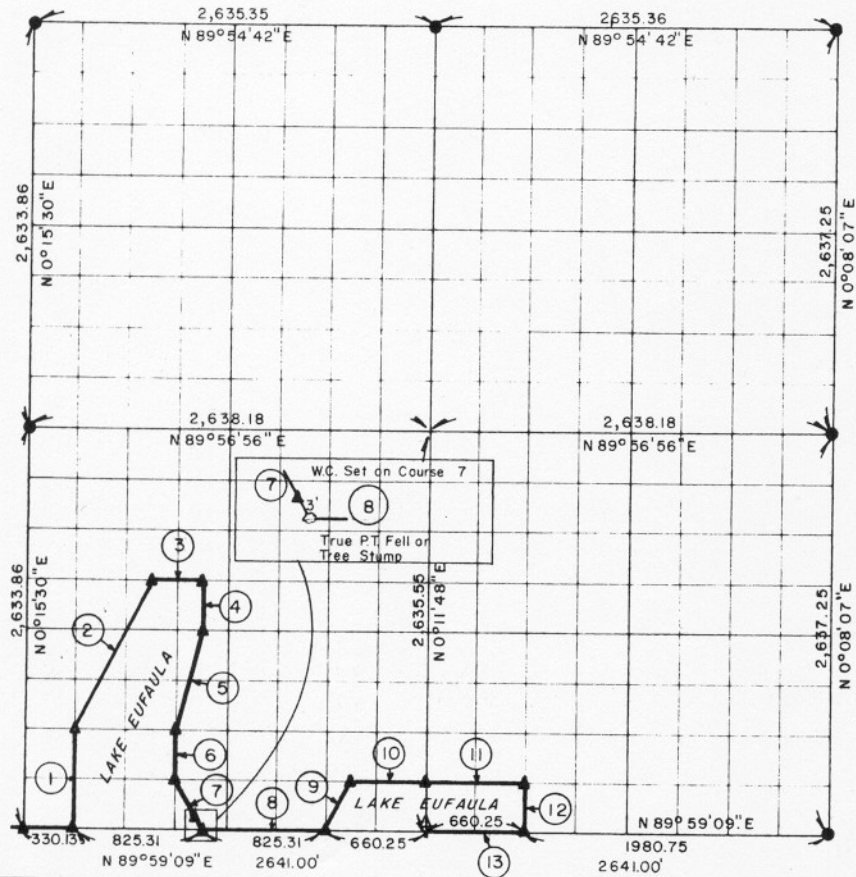


PARTIAL BOUNDARY SURVEYS
 EUFAULA LAKE
 OKLAHOMA

Performed Under Contract Number DACW 56-76-C-0238

SEC. 11, T. 9 N., R. 15 E., COUNTY McINTOSH



Course No.	Distance	Bearing	Course No.	Distance	Bearing
1.	658.52'	N 00°15'02"E			
2.	1107.02'	N 26°48'09"E			
3.	329.90'	N 89°57'46"E			
4.	329.32'	S 00°13'53"W			
5.	679.72'	S 14°16'54"W			
6.	329.31'	S 00°14'07"W			
7.	367.72'	S 26°26'12"E			
8.	825.31'	N 89°59'09"E			
9.	369.02'	N 26°46'43"E			
10.	495.12'	N 89°58'52"E			
11.	660.16'	N 89°58'52"E			
12.	329.50'	S 00°10'53"W			
13.	660.25'	S 89°59'09"W			

CERTIFICATE OF SURVEY

I Herby Certify That The Above Plat is a True and Correct Representation of The Survey Made in Section 11, T. 9 N., R. 15 E., McINTOSH COUNTY, OKLAHOMA

Frank P. Pierce
 Registered Professional Engineer
 Registered Land Surveyor

Field Book No. E 1270 Date MARCH, 1977

MAPCO ENGINEERING CORPORATION

Under The Supervision Of

U.S. ARMY ENGINEER DISTRICT, TULSA
 CORPS OF ENGINEERS

SHEET 1 of 2

LEGEND

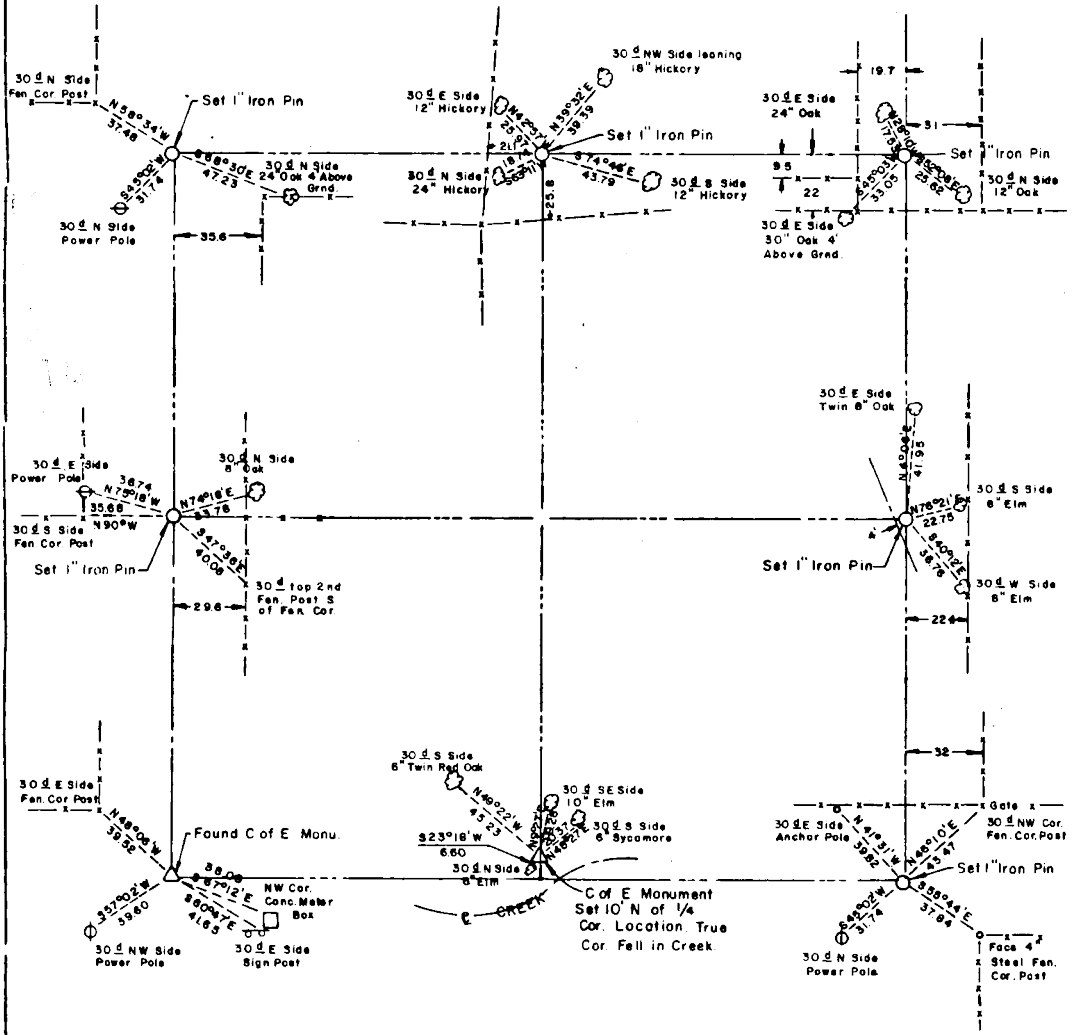
- ▲ MONUMENT
- ORIGINAL CORNER
- IRON PIN

273

EUFAULA LAKE OKLAHOMA

SECTION AND QUARTER SECTION CORNER
REFERENCES FOR

SEC. II , T 9 N, R15E COUNTY- MCINTOSH



Scale 1" = 50'
Date: March, 1977
Field book No. E 1270

- LEGEND**
- △ - Monument
 - - Original Corner
 - - Iron pin