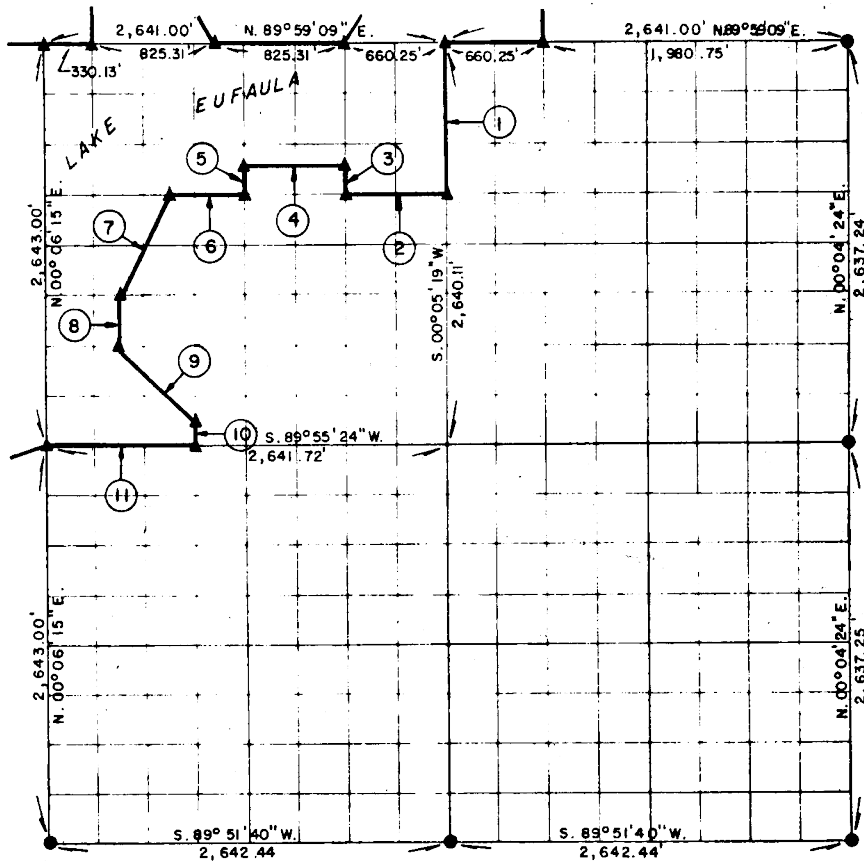


PARTIAL BOUNDARY SURVEYS
EUFAULA LAKE
OKLAHOMA

Performed Under Contract Number DACW 56-76-C-0238

SEC. 14, T. 9 N., R. 15 E., COUNTY McINTOSH



Course No.	Distance	Bearing	Course No.	Distance	Bearing
1.	990.04'	S. 00° 05' 19" W.			
2.	660.32'	S. 89° 57' 45" W.			
3.	165.05'	N. 00° 05' 33" E.			
4.	660.31'	S. 89° 57' 59" W.			
5.	165.10'	S. 00° 05' 47" W.			
6.	495.24'	S. 89° 57' 45" W.			
7.	739.24'	S. 26° 37' 41" W.			
8.	330.31'	S. 00° 06' 04" W.			
9.	699.52'	S. 44° 58' 38" E.			
10.	165.12'	S. 00° 05' 54" W.			
11.	990.64'	S. 89° 55' 24" W.			

Field Book No. E1271 Date MARCH, 1977

CERTIFICATE OF SURVEY

I Herby Certify That The Above Plat is a True and Correct Representation of The Survey Made in Section

14, T. 9 N., R. 15 E., McINTOSH COUNTY, OKLAHOMA

Frank P. Deese
Registered Professional Engineer
Registered Land Surveyor

MAPCO ENGINEERING CORPORATION

Under The Supervision Of

U.S. ARMY ENGINEER DISTRICT, TULSA
CORPS OF ENGINEERS.

SHEET 1 of 2

LEGEND

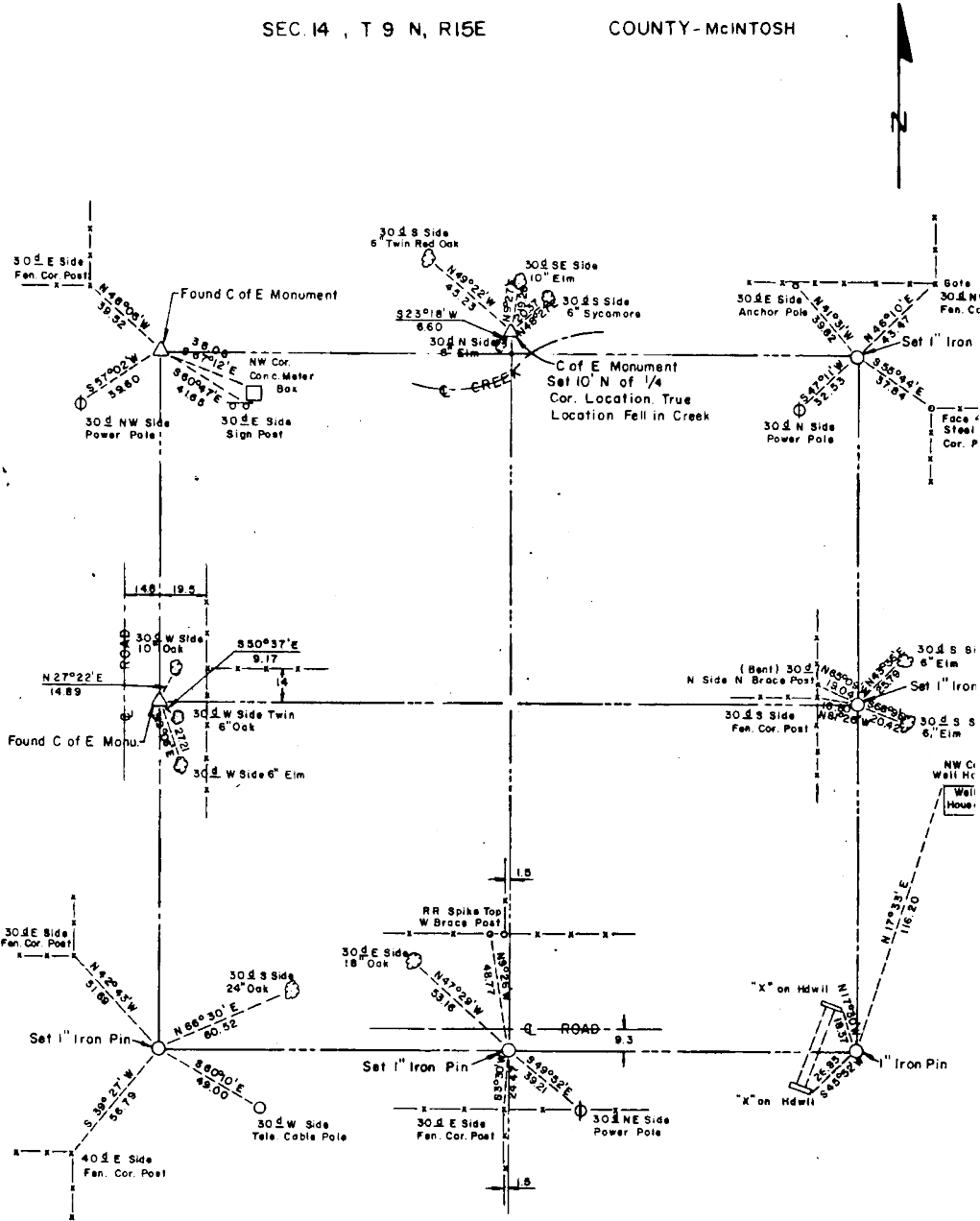
- ▲ MONUMENT
- ORIGINAL CORNER
- IRON PIN

EUFAULA LAKE OKLAHOMA

SECTION AND QUARTER SECTION CORNER
REFERENCES FOR

SEC. 14, T. 9 N, R. 15 E

COUNTY - McINTOSH



Scale: 1" = 50'
Date: March, 1977
Field book No. E 1271

LEGEND

- Δ - Monument
- - Original Corner
- - Iron pin