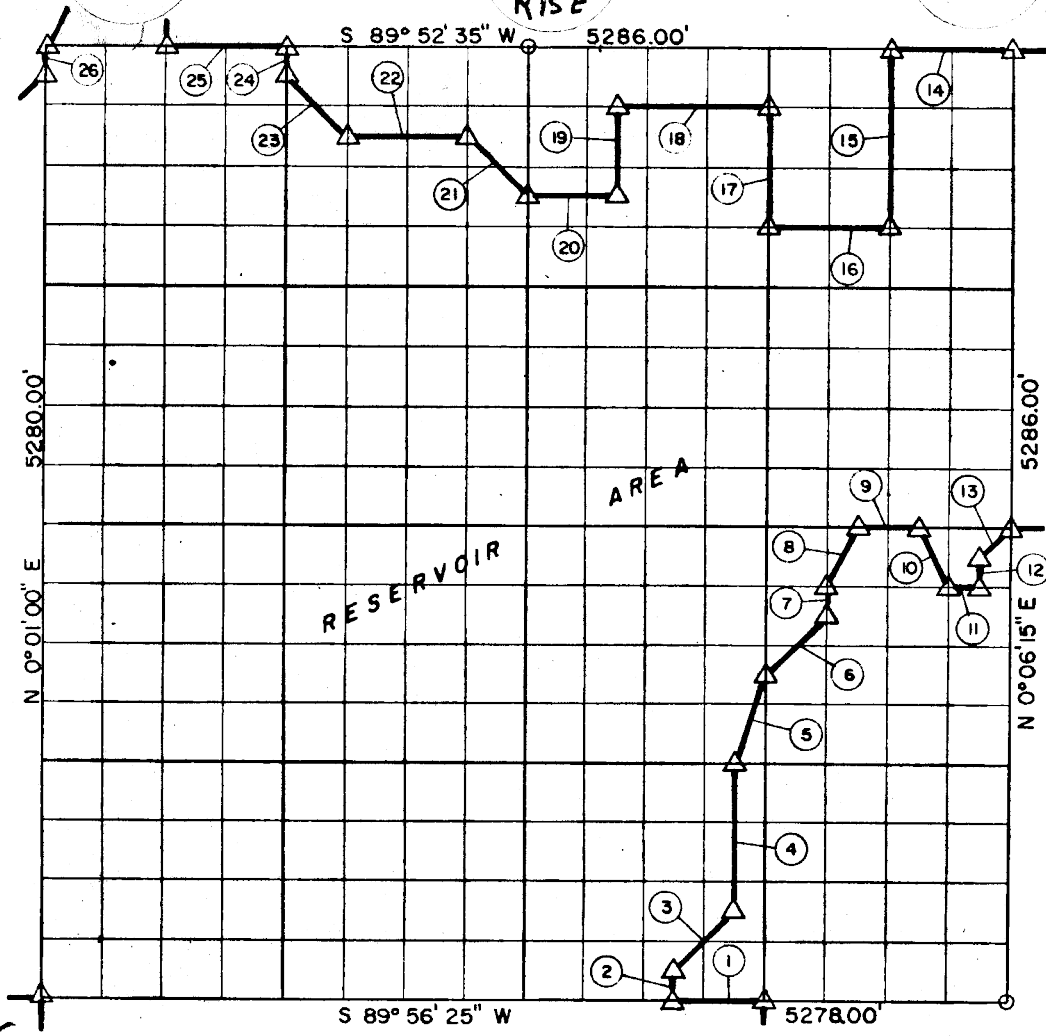


RISE



Course No.	Distance	Bearing	Course No.	Distance	Bearing
1	494.81'	S 89° 56' 25" W	20	495.44'	S 89° 53' 10" W
2	165.12'	N 0° 04' 27" E	21	466.34'	N 45° 02' 25" W
3	467.38'	N 44° 58' 33" E	22	660.66'	S 89° 53' 00" W
4	825.67'	N 0° 04' 45" E	23	466.36'	N 45° 03' 25" W
5	522.72'	N 18° 29' 15" E	24	165.05'	N 0° 02' 20" E
6	467.62'	N 44° 58' 51" E	25	660.75'	S 89° 52' 35" W
7	165.15'	N 0° 05' 15" E	26	165.00'	S 0° 01' 00" W
8	369.70'	N 26° 36' 15" E			
9	330.12'	N 89° 54' 30" E			
10	368.53'	S 26° 30' 35" E			
11	165.05'	N 89° 54' 45" E			
12	165.18'	N 0° 06' 05" E			
13	233.92'	N 44° 58' 51" E			
14	660.75'	S 89° 52' 35" W			
15	990.98'	S 0° 05' 35" W			
16	660.56'	S 89° 53' 20" W			
17	660.56'	N 0° 04' 55" E			
18	825.86'	S 89° 52' 50" W			
19	495.33'	S 0° 04' 05" W			

12, 114.61

Book No. E-926

Date: March, 1965

287

LEGEND

- 5/8" Rods w/Caps
- △ C. of E. Mon.
- ==== Measured Line
- Calculated Line

I, James E. Curry, a Registered Professional Engineer, do hereby certify that the above plat is a true and accurate survey of Sec. 15, T 9 N, R 15 E as made under my supervision.

James E. Curry
 JAMES E. CURRY
 Reg. Prof. Engr. No. 1872