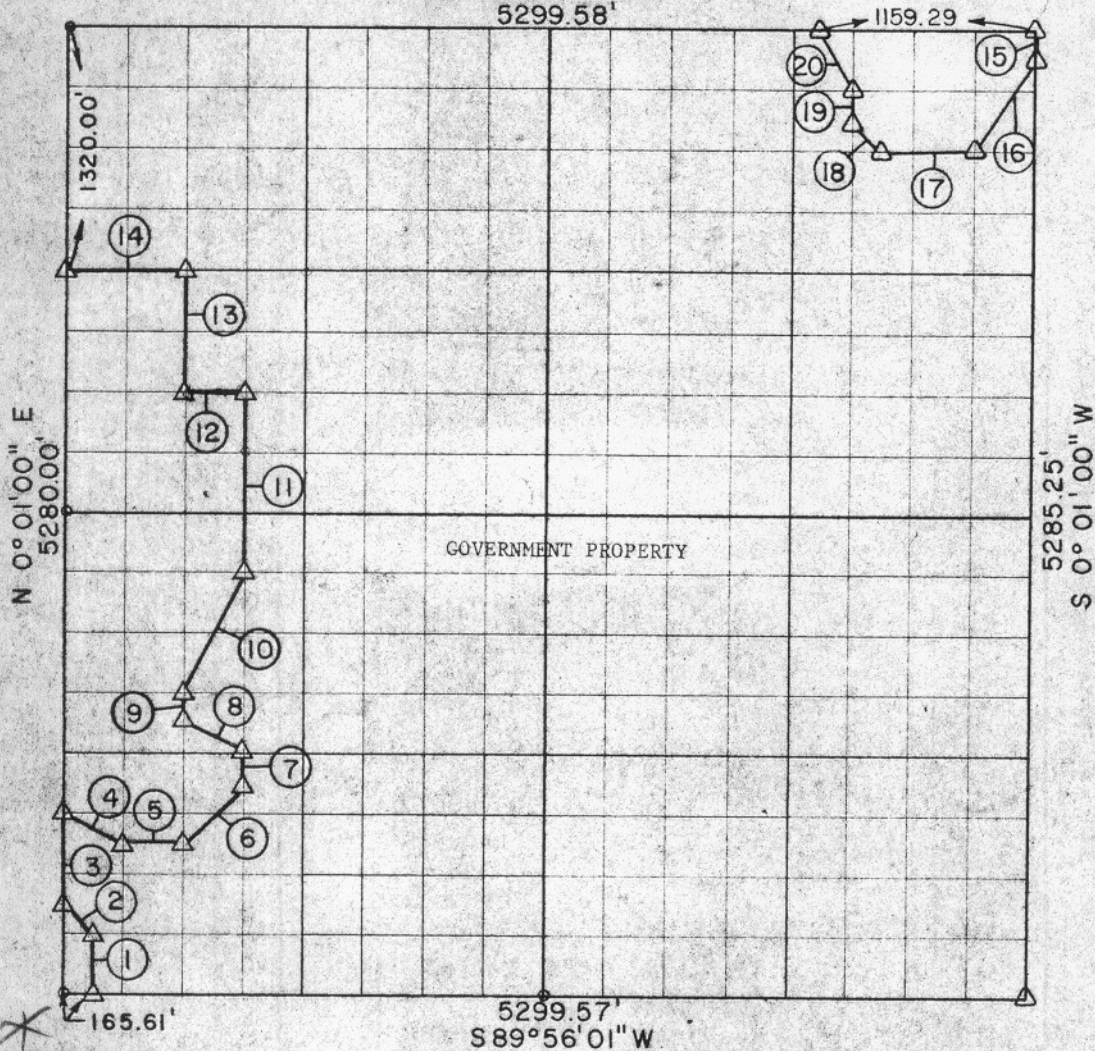


SEC. 16 T-9-N R-15-E COUNTY MCINTOSH

N 89° 52' 37" E
5299.58'



COURSE NUMBER	DISTANCE	BEARING	COURSE NUMBER	DISTANCE	BEARING
1.	330.01	N 0° 01' 00" E	12.	331.23	S 89° 53' 46" W
2.	233.59	N 45° 07' 51" W	13.	495.06	N 0° 01' 00" E
3.	495.00	N 0° 01' 00" E	14.	662.24	S 89° 53' 28" W
4.	370.07	S 63° 30' 52" E	15.	165.17	S 0° 01' 00" W
5.	331.22	N 89° 55' 28" E	16.	596.59	S 33° 44' 22" W
6.	467.60	N 45° 06' 06" E	17.	496.84	S 89° 52' 50" W
7.	165.03	N 0° 01' 00" E	18.	233.60	N 45° 08' 11" W
8.	370.06	N 63° 31' 03" W	19.	165.13	N 0° 01' 00" E
9.	165.02	N 0° 01' 00" E	20.	369.10	N 26° 38' 40" W
10.	739.45	N 26° 37' 05" E		1159.29	N 89° 52' 37" E
11.	1155.19	N 0° 01' 00" E			

Field Book No. E1148 Dated 8-12-71
POE AND ASSOCIATES, INC. - ENGINEERS
Under the Supervision of
U.S. ARMY CORPS OF ENGINEERS TULSA, DISTRICT

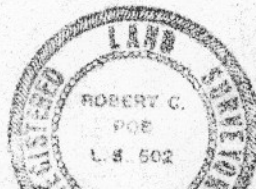
CERTIFICATE OF SURVEY

I hereby certify that the above plat is a true and correct representation of the survey made in Section 16, T 9 N, R 15 E, McIntosh County, Oklahoma.

Robert C. Poe
Robert C. Poe
Registered Land Surveyor No. 602

LEGEND

△ MONUMENT



210