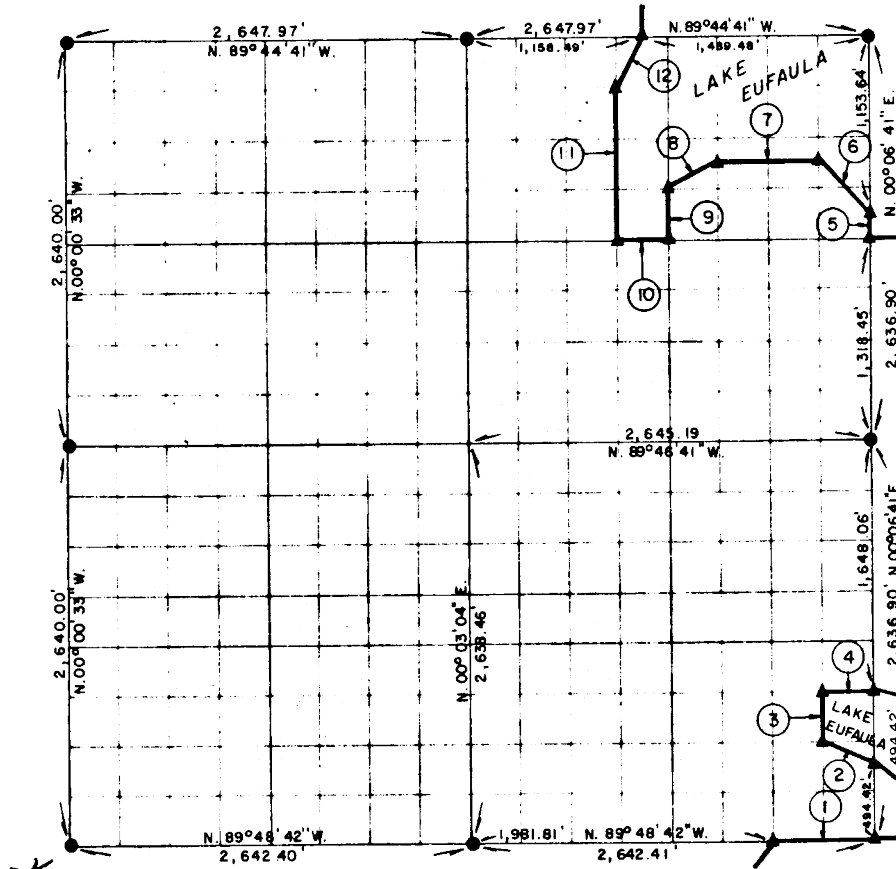


PARTIAL BOUNDARY SURVEYS  
 EUFAULA LAKE  
 OKLAHOMA

Performed Under Contract Number DACW 56-76-C-0238

SEC 17, T 9 N., R 15 E., COUNTY McINTOSH



Course No.	Distance	Bearing	Course No.	Distance	Bearing
1.	660.60'	S. 89° 48' 42" E.			
2.	369.43'	N. 63° 18' 33" W.			
3.	329.64'	N. 00° 06' 14" E.			
4.	330.43'	S. 89° 47' 57" E.			
5.	164.81'	N. 00° 06' 41" E.			
6.	467.59'	N. 44° 55' 55" W.			
7.	661.77'	N. 89° 45' 18" W.			
8.	369.26'	S. 63° 43' 45" W.			
9.	329.71'	S. 00° 04' 52" W.			
10.	330.82'	N. 88° 45' 41" W.			
11.	989.20'	N. 00° 04' 25" E.			
12.	368.46'	N. 26° 45' 47" E.			

Field Book No. E 1272 Date MARCH, 1977

CERTIFICATE OF SURVEY

Hereby Certify That The Above Plat is a True and Correct Representation of The Survey Made in Section 17, T 9 N., R 15 E., McINTOSH COUNTY, OKLAHOMA

*Frank P. Pinner*  
 Registered Professional Engineer  
 Registered Land Surveyor

MAPCO ENGINEERING CORPORATION

Under The Supervision of

U.S. ARMY ENGINEER DISTRICT, TULSA  
 CORPS OF ENGINEERS

SHEET 1 of 2

LEGEND

- ▲ MONUMENT
- ORIGINAL CORNER
- IRON PIN

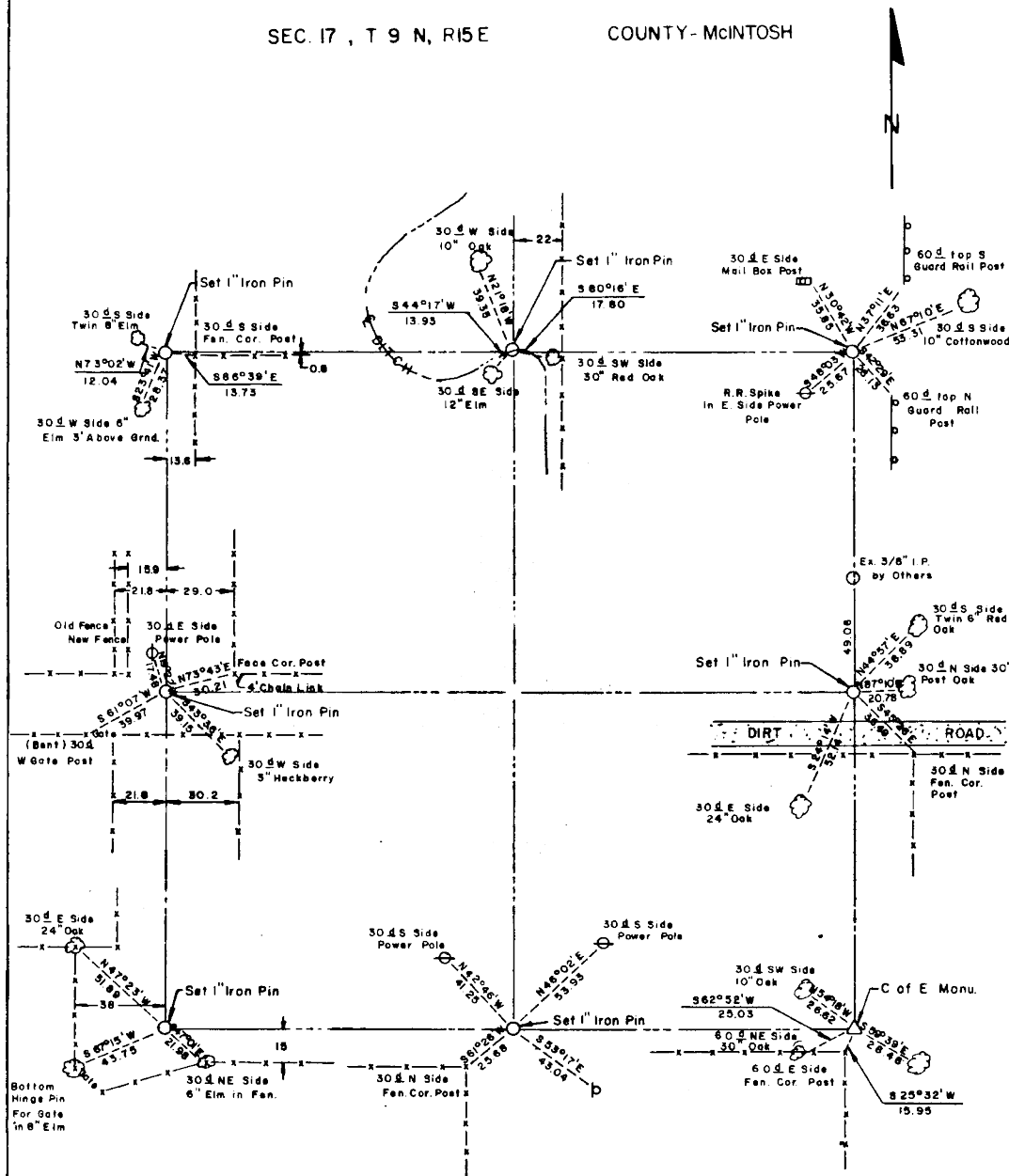
235

# EUFAULA LAKE OKLAHOMA

## SECTION AND QUARTER SECTION CORNER REFERENCES FOR

SEC. 17, T 9 N, R 15 E

COUNTY - MCINTOSH



Scale: 1" = 50'  
Date: March, 1977  
Field book No. E 1272

### LEGEND

- △ - Monument
- - Original Corner
- - Iron pin

MAPCO ENGINEERING CORPORATION

SHEET 2 of 2