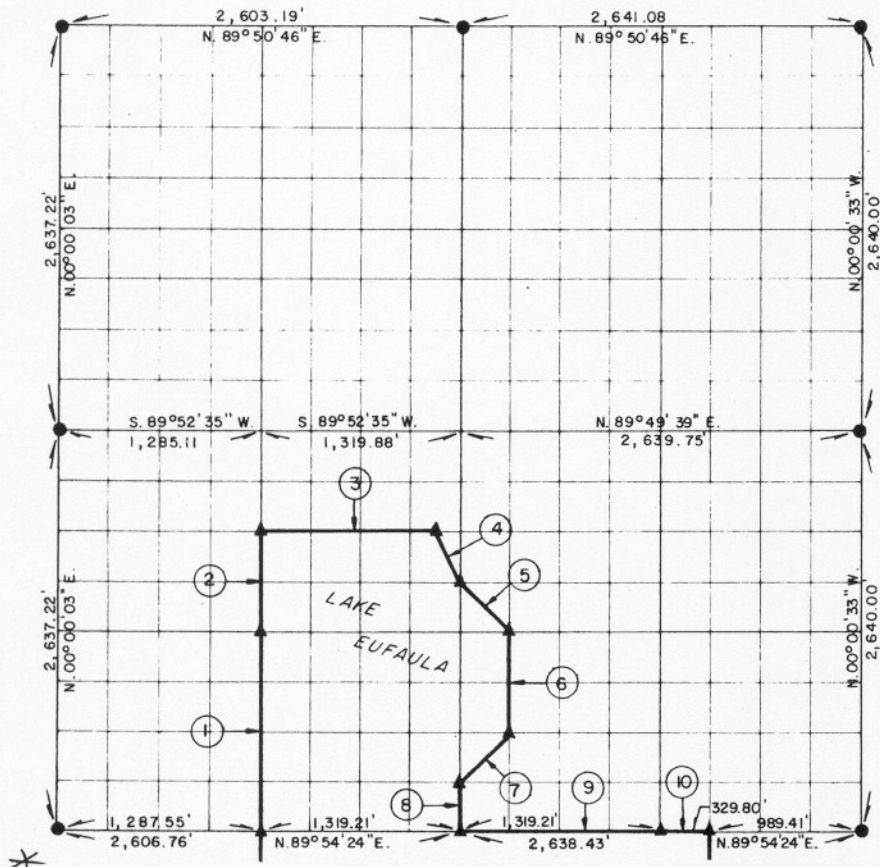


PARTIAL BOUNDARY SURVEYS
EUFAULA LAKE
OKLAHOMA

Performed Under Contract Number DACW 56-76-C-0238

SEC. 18, T. 9 N., R. 15 E., COUNTY McINTOSH



Course No.	Distance	Bearing	Course No.	Distance	Bearing
1.	1,318.95'	N. 00° 03' 08" W.			
2.	659.47'	N. 00° 03' 08" W.			
3.	1,154.75'	N. 89° 53' 02" E.			
4.	368.58'	S. 26° 37' 32" E.			
5.	466.20'	S. 45° 04' 43" E.			
6.	659.69'	S. 00° 02' 03" E.			
7.	466.72'	S. 44° 55' 57" W.			
8.	329.82'	S. 00° 02' 16" E.			
9.	1,319.21'	N. 89° 54' 24" E.			
10.	329.80'	N. 89° 54' 24" E.			

CERTIFICATE OF SURVEY

I hereby certify that the above plat is a true and correct representation of the survey made in Section 18, T. 9 N., R. 15 E., McIntosh County, Oklahoma.

Frank P. Riecke
Registered Professional Engineer
Registered Land Surveyor

Field Book No. E1273 Date MARCH, 1977

MAPCO ENGINEERING CORPORATION

Under the Supervision of

U.S. ARMY ENGINEER DISTRICT, TULSA
CORPS OF ENGINEERS

SHEET 1 of 2

LEGEND

- ▲ MONUMENT
- ORIGINAL CORNER
- IRON PIN

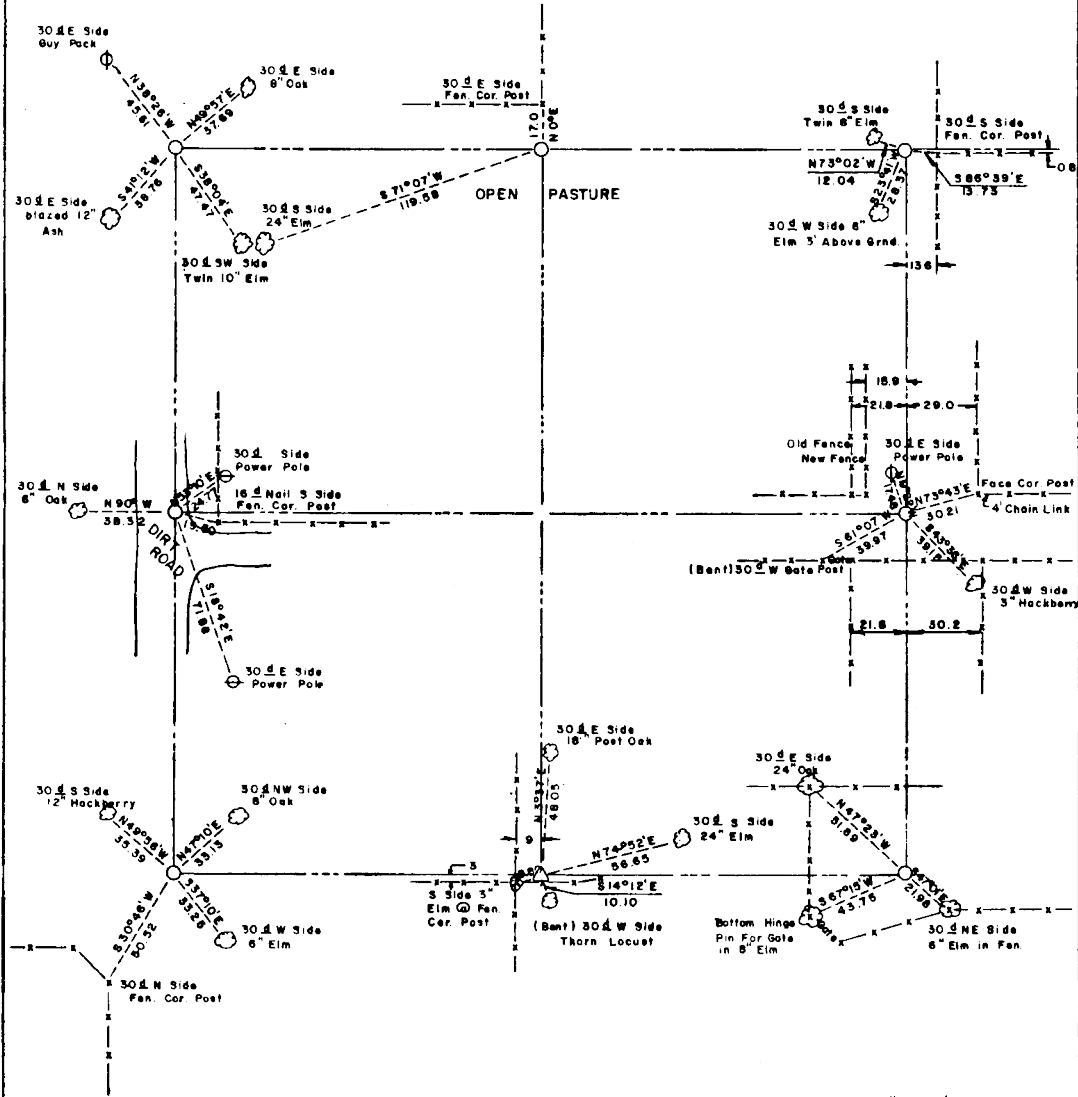
289

EUFAULA LAKE OKLAHOMA

SECTION AND QUARTER SECTION CORNER
REFERENCES FOR

SEC. 18 , T 9 N, R15E

COUNTY - MCINTOSH



Scale 1" = 50'
Date - March, 1977
Field book No. E 1273

LEGEND

- △ Monument
- Original Corner
- Iron pin